

Turkmenistan

Tuberculosis profile

Population 2013

5.2 million

Estimates of TB burden * 2013	Number (thousands)	Rate (per 100 000 population)
Mortality (excludes HIV+TB)	1.3 (1.1–1.5)	25 (22–28)
Mortality (HIV+TB only)	0 (-)	0 (-)
Prevalence (includes HIV+TB)	5.4 (2.5–9.4)	103 (47–180)
Incidence (includes HIV+TB)	3.8 (3.1–4.6)	72 (59–87)
Incidence (HIV+TB only)		
Case detection, all forms (%)	80 (67–99)	

Estimates of MDR-TB burden * 2013	New	Retreatment
% of TB cases with MDR-TB	3.8 (1.1–9.5)	18 (11–28)
MDR-TB cases among notified pulmonary TB cases	85 (25–210)	170 (100–250)

TB case notifications 2013	New **	Relapse
Pulmonary, bacteriologically confirmed	1 220	272
Pulmonary, clinically diagnosed	1 028	
Extrapulmonary	526	

Total new and relapse	3 046
Previously treated, excluding relapses	629
Total cases notified	3 675

Reported cases of RR-/MDR-TB 2013	New	Retreatment	Total **
Cases tested for RR-/MDR-TB			
Laboratory-confirmed RR-/MDR-TB cases			81
Patients started on MDR-TB treatment			81

TB/HIV 2013	Number	(%)
TB patients with known HIV status		
HIV-positive TB patients		
HIV-positive TB patients on co-trimoxazole preventive therapy (CPT)		
HIV-positive TB patients on antiretroviral therapy (ART)		
HIV-positive people screened for TB		
HIV-positive people provided with IPT		

Treatment success rate (%)	(%)
New cases registered in 2012	84
Previously treated cases registered in 2012	63
HIV-positive TB cases, all types, registered in 2012	
RR-/MDR-TB cases started on second-line treatment in 2011	
XDR-TB cases started on second-line treatment in 2011	

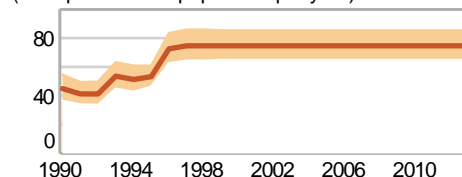
Laboratories 2013	
Smear (per 100 000 population)	1.2
Culture (per 5 million population)	2.9
Drug susceptibility testing (per 5 million population)	2.9
Sites performing Xpert MTB/RIF	4
Is second-line drug susceptibility testing available?	No

Financing TB control 2014	
National TB programme budget (US\$ millions)	
% Funded domestically	
% Funded internationally	
% Unfunded	

* Ranges represent uncertainty intervals

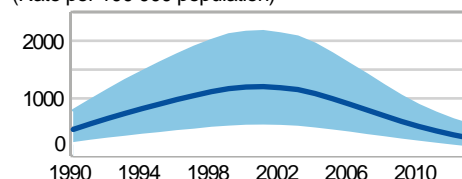
** Includes cases with unknown previous TB treatment history

(Rate per 100 000 population per year)



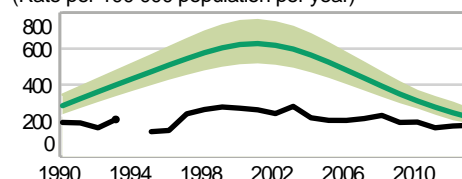
Mortality (excludes HIV+TB)

(Rate per 100 000 population)



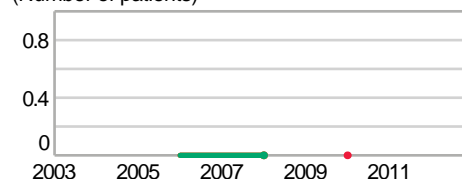
Prevalence

(Rate per 100 000 population per year)



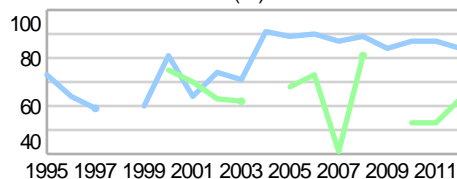
Notified (new and relapse) Incidence
Incidence (HIV+TB only)

(Number of patients)



HIV-positive TB patients
on CPT on ART

Treatment success rate (%)



New Retreatment
HIV-positive RR-/MDR-TB XDR-TB

Total budget (US\$ millions)



Funded domestically Funded internationally
Unfunded