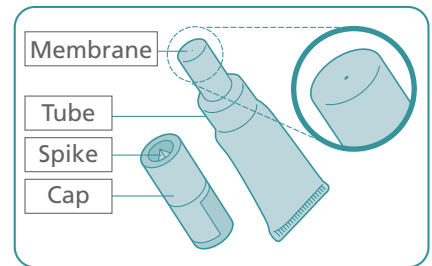


A What you need to do before giving Rotarix™

- Check the expiry date.
- Check the tube has not been damaged nor is already open.
- Check the liquid is clear and colourless, without any particles in it.

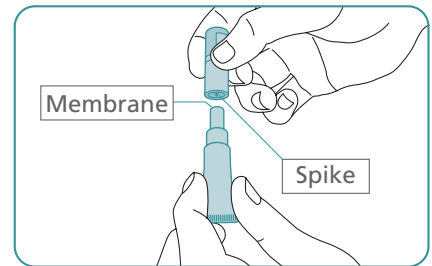
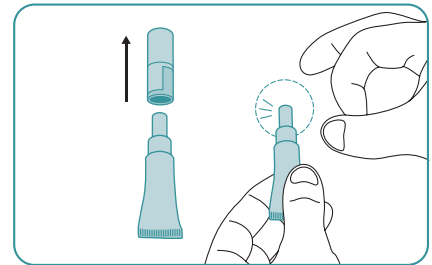
If you notice anything abnormal, do not use the vaccine.

- This vaccine is given orally - straight from the tube.
- It is ready to use - you do not need to mix it with anything.



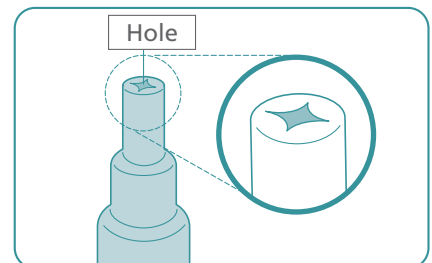
B Get the tube ready

- 1. Pull off the cap**
 - Keep the cap – you need this to pierce the membrane.
 - Hold the tube upright.
- 2. Repeatedly flick the top of the tube until it is clear of any liquid**
 - Clear any liquid from the thinnest section of the tube by flicking just below the membrane.
- 3. Position the cap to open the tube**
 - Keep the tube held upright.
 - Hold the side of tube
 - There is a small spike inside the top of the cap - in the centre.
 - Turn the cap upside down (180°).
- 4. To open the tube**
 - You do not need to twist. Press the cap down to pierce the membrane.
 - Then lift off the cap.



C Check the tube has opened correctly

- 1. Check the membrane has been pierced**
 - There should be a hole at the top of the tube.
- 2. What to do if the membrane has not been pierced**
 - If the membrane has not been pierced return to section B and repeat steps 2, 3 and 4.



D Give the vaccine

- Once the tube is open check the liquid is clear, without any particles in it. If you notice anything abnormal, do not use the vaccine.
 - Give the vaccine straight away.
- 1. Position the child to give the vaccine**
 - Seat the child leaning slightly backwards.
 - 2. Administer the vaccine**
 - Squeeze the liquid gently into the side of the child's mouth - towards the inside of their cheek.
 - You may need to squeeze the tube a few times to get all of the vaccine out - it is okay if a drop remains in the tip of the tube.

