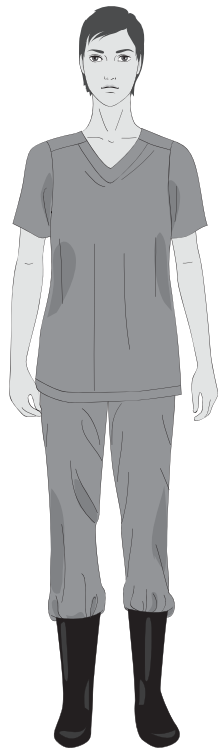


Steps to put on personal protective equipment (PPE) including coverall

1 Remove all personal items (jewelry, watches, cell phones, pens, etc.)



2 Put on **scrub suit** and rubber **boots**¹ in the changing room.

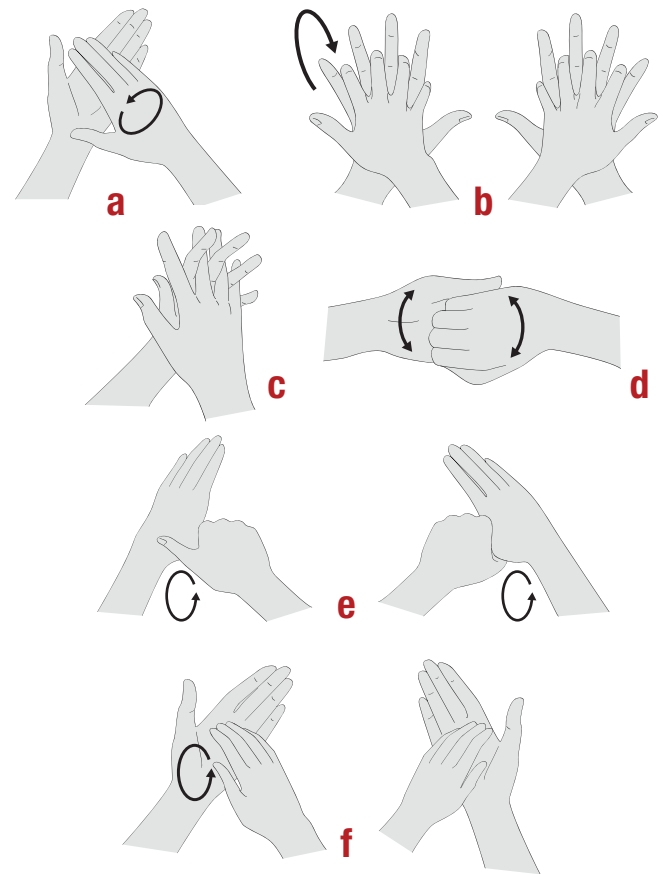


3 Move to the clean area at the entrance of the isolation unit.

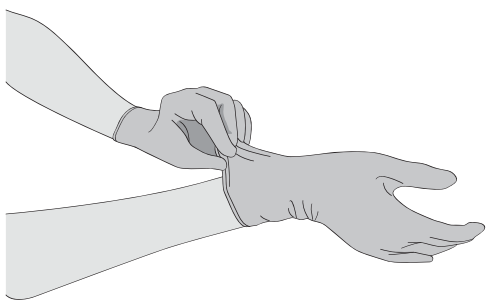
4 By visual inspection, ensure that all sizes of the PPE set are correct and the quality is appropriate.

5 Undertake the procedure of putting on PPE under the **guidance and supervision of a trained observer** (colleague).

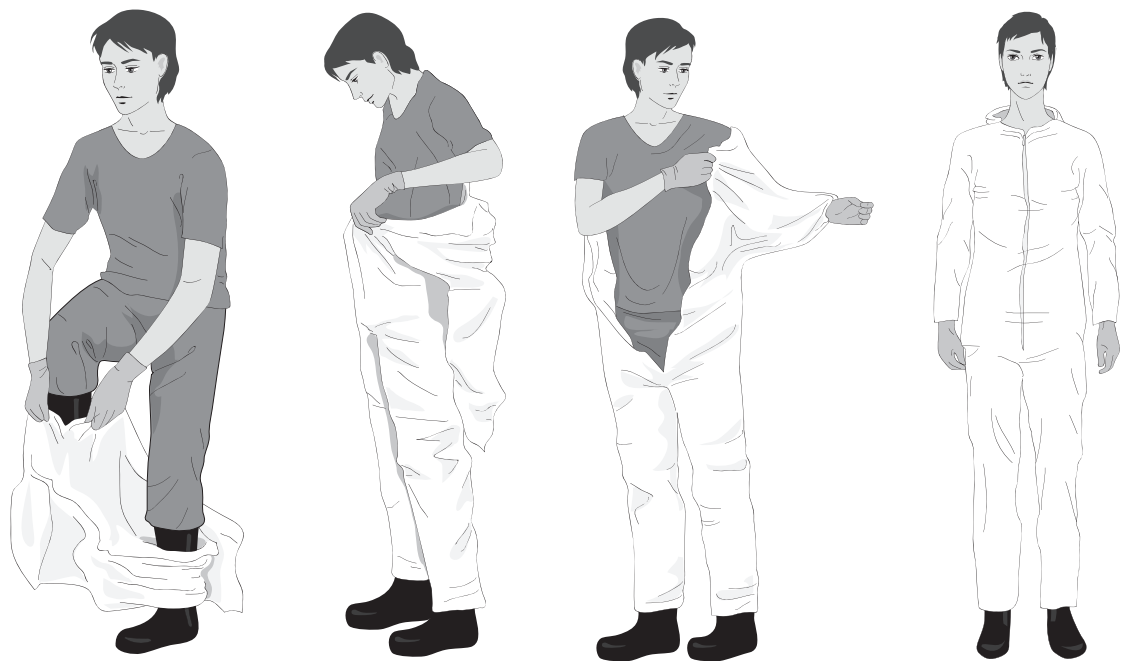
6 Perform **hand hygiene**.



7 Put on **gloves** (examination, nitrile gloves).



8 Put on **coverall**.²



9 Put on **face mask**.



10 Put on **face shield OR goggles**.



OR



11 Put on **head and neck covering** surgical bonnet covering neck and sides of the head (preferable with face shield) **OR** hood.



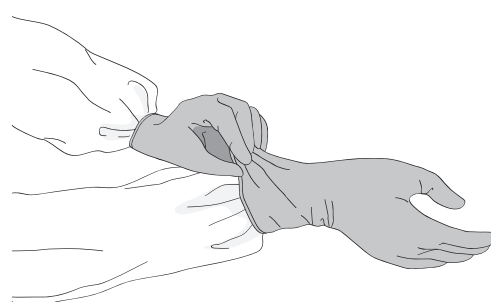
OR



12 Put on **disposable waterproof apron** (if not available, use heavy duty, reusable waterproof apron).



13 Put on second pair of (preferably long cuff)² **gloves** over the cuff.



¹ If boots are not available, use closed shoes (slip-ons without shoelaces and fully covering the dorsum of the foot and ankles) and shoe covers (nonslip and preferably impermeable)

² Do not use adhesive tape to attach the gloves. If the gloves or the coverall sleeves are not long enough, make a thumb (or middle finger) hole in the coverall sleeve to ensure that your forearm is not exposed when making wide movements. Some coverall models have finger loops attached to sleeves.