

# How to Do a SARS-CoV-2 Antigen Rapid Diagnostic Test

Sample collection, testing and interpretation of SARS-CoV-2 Antigen RDTs

**READ THE MANUFACTURERS' INSTRUCTIONS CAREFULLY BEFORE YOU BEGIN**

## Preparation for sample collection

- A. New (unopened) individually wrapped sterile nasopharyngeal swab
- B. Personal protective equipment-Gloves, gown, eye protection or face shield & medical mask
- C. Pen for marking or labelling



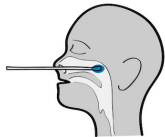
## Preparation for SARS-CoV-2 Antigen testing

- A. New (unopened) COVID-19 Antigen Test Device
- B. Timer
- C. Extraction buffer tube and nozzle
- D. Medical waste container
- E. Disinfectant (Bleach and Alcohol)



## Sample collection

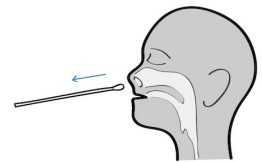
- 1** Insert a sterile nasopharyngeal swab into the nasal cavity of the patient, reaching the surface of the posterior nasopharynx



- 2** Swab over the surface of the posterior nasopharynx, rotating the swab 3-4 times to ensure a good sample. Leaving the swab in the nasal cavity for a few seconds will ensure absorption of the nasal secretions



- 3** Withdraw the sterile swab from the nasal cavity



## SARS-CoV-2 Antigen testing

- 4** Insert the swab into an extraction buffer tube. While squeezing the buffer tube, stir the swab



- 5** Remove the swab while squeezing the sides of the tube to extract the liquid from the swab



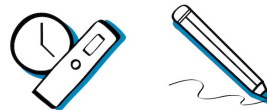
- 6** Press the nozzle cap tightly onto the tube



- 7** Apply the drops of extracted specimen to the specimen well of the test device. Add the exact number of drops specified by the manufacturer



- 8** Read and record the test result after the specified period. Report the test result



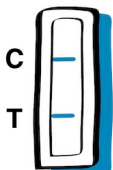
- 9** Dispose of the gloves, test device, swab and extraction buffer tube in the medical waste container. Disinfect the workstation with bleach and alcohol



## Interpretation of the test result

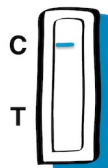
### Positive

A line in "C" AND a line in "T" means SARS-CoV-2 is DETECTED



### Negative

A line in "C" and NO LINE in "T" means SARS-CoV-2 is NOT DETECTED



### Invalid

NO LINE in "C" and a line or no line in "T" means the test is INVALID. Repeat the test using a new (unopened) SARS-CoV-2 Antigen test device and a new sample

