



Inter Country and Expert Meeting on SLT Control Policy

16-18 August 2017, Delhi, India

HASSAN MOHAMED
@HEALTH PROTECTION AGENCY, MoH
MALDIVES





SLT in the context of MALDIVES

Highlights:

- Prevalence
- Changing habits
- Control Measures
- Implications & Lessons for
SLT Control

4:25 4444 4 4 444
4:25 4444 4 4 444
4:25 4444 4 4 444

REASURANCE
GANESH 701
SCENTED KHANI
TEST & ENJOY!
SWEETENED KHANI

4:25 4444 4 4 444
4:25 4444 4 4 444
4:25 4444 4 4 444

REASURANCE
GANESH 701
SCENTED KHANI
TEST & ENJOY!
SWEETENED KHANI

4:25 4444 4 4 444
4:25 4444 4 4 444
4:25 4444 4 4 444

REASURANCE
GANESH 701
SCENTED KHANI
TEST & ENJOY!
SWEETENED KHANI

4:25 4444 4 4 444
4:25 4444 4 4 444
4:25 4444 4 4 444

REASURANCE
GANESH 701
SCENTED KHANI
TEST & ENJOY!
SWEETENED KHANI

4:25 4444 4 4 444
4:25 4444 4 4 444
4:25 4444 4 4 444





SLT in the context of MALDIVES

Prevalence:

Tobacco Use

Smoking	18.8	(34.7 men 3.4 women)	2011
Smokeless	3.7	(5.6 men 2.6 women)	2011



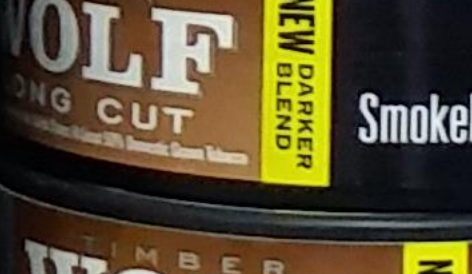
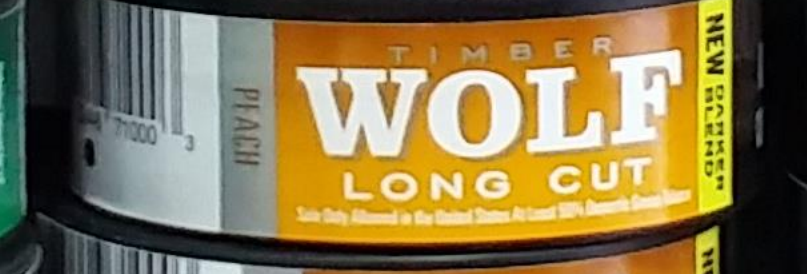
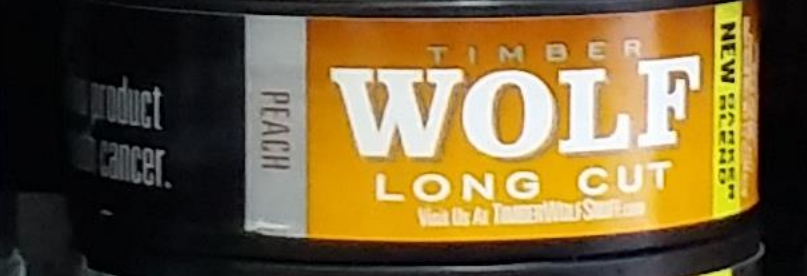
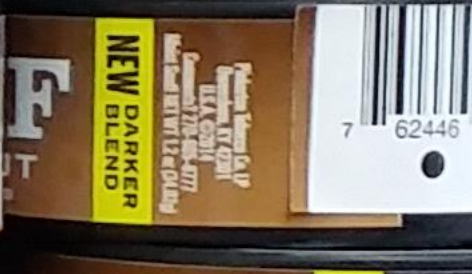
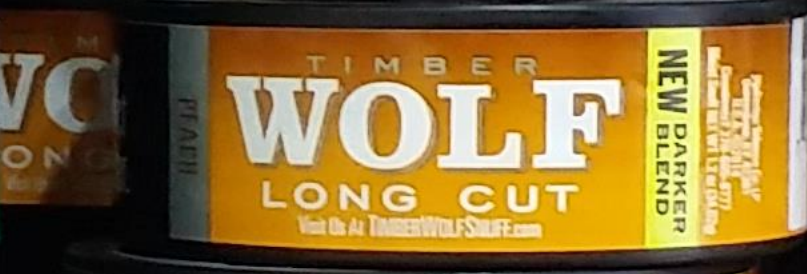
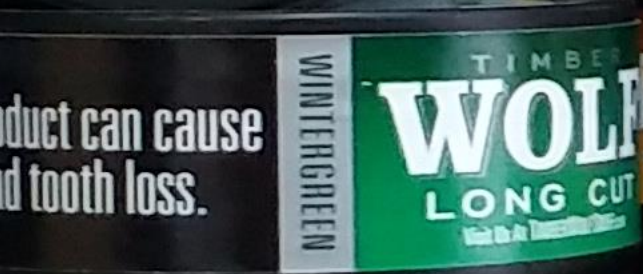


SLT in the context of MALDIVES

Prevalence:

Imports:

Year	Cigarettes	SLT
2001	223,540,500	2,405 Kgs
2010	346,371,400	20,447 Kgs
2016	497,867,750	26,475 Kgs





SLT in the context of MALDIVES

Changing Habits:

- Cigarettes are the most popular
- Coloured and flavoured chewing tobacco are being introduced and accepted
- Shisha and e-cigarettes are the fastest growing forms of tobacco
- Smokeless tobacco served along with betel and areca nuts, in cafes and restaurants





SLT in the context of MALDIVES

Control Measures:

- SLT is fully covered under the law (SLT is subject to all provisions of the Tobacco Control Act 2010 just as other tobacco products)
- Total ban on TAPS include SLT
- SLT use is also subject to smoke free public places regulations (wherever smoking is restricted, same applies to SLT)





SLT in the context of MALDIVES

Implications & Lessons for SLT Control:

- Maldives is a net importer of tobacco products
- Better control in the region, limits access and availability
- Stringent and effectively enforced smoke free laws would provide incentive for SLT
- Cross-boarder advertising is



-THANK YOU-

