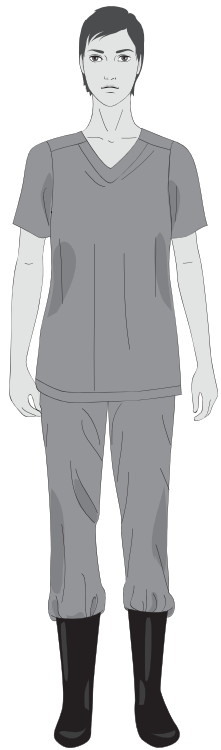


Steps to put on personal protective equipment (PPE) including gown

1 Remove all personal items (jewelry, watches, cell phones, pens, etc.)



2 Put on **scrub suit** and rubber **boots**¹ in the changing room.

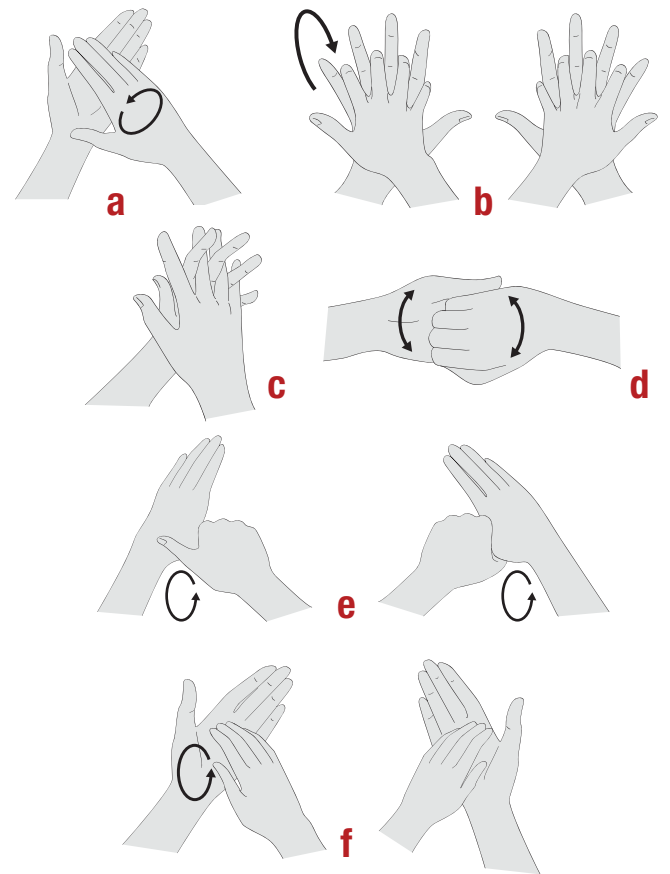


3 Move to the clean area at the entrance of the isolation unit.

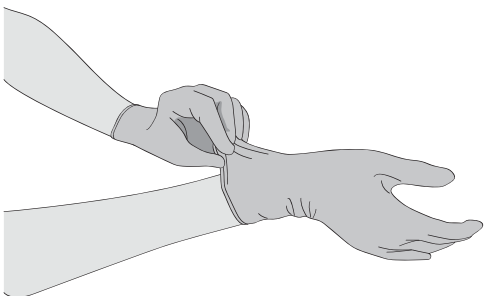
4 By visual inspection, ensure that all sizes of the PPE set are correct and the quality is appropriate.

5 Undertake the procedure of putting on PPE under the **guidance and supervision of a trained observer** (colleague).

6 Perform **hand hygiene**.



7 Put on **gloves** (examination, nitrile gloves).



8 Put on disposable **gown**

made of fabric that is tested for resistance to penetration by blood or body fluids **OR** to blood-borne pathogens.



9 Put on **face mask**.



10 Put on **face shield OR goggles**.



OR



11 Put on **head and neck covering** surgical bonnet covering neck and sides of the head (preferable with face shield) **OR** hood.



OR

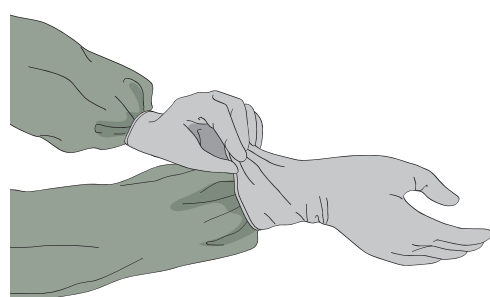


12 Put on **disposable waterproof apron**

(if not available, use heavy duty, reusable waterproof apron).



13 Put on second pair of (preferably long cuff) **gloves** over the cuff.



¹ If boots are not available, use closed shoes (slip-ons without shoelaces and fully covering the dorsum of the foot and ankles) and shoe covers (nonslip and preferably impermeable)