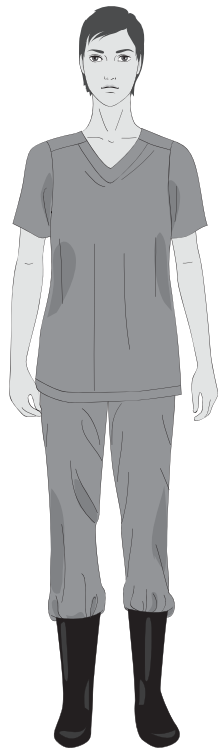


# Steps to put on personal protective equipment (PPE) including coverall

**1** Remove all personal items (jewelry, watches, cell phones, pens, etc.)



**2** Put on **scrub suit** and rubber **boots**<sup>1</sup> in the changing room.

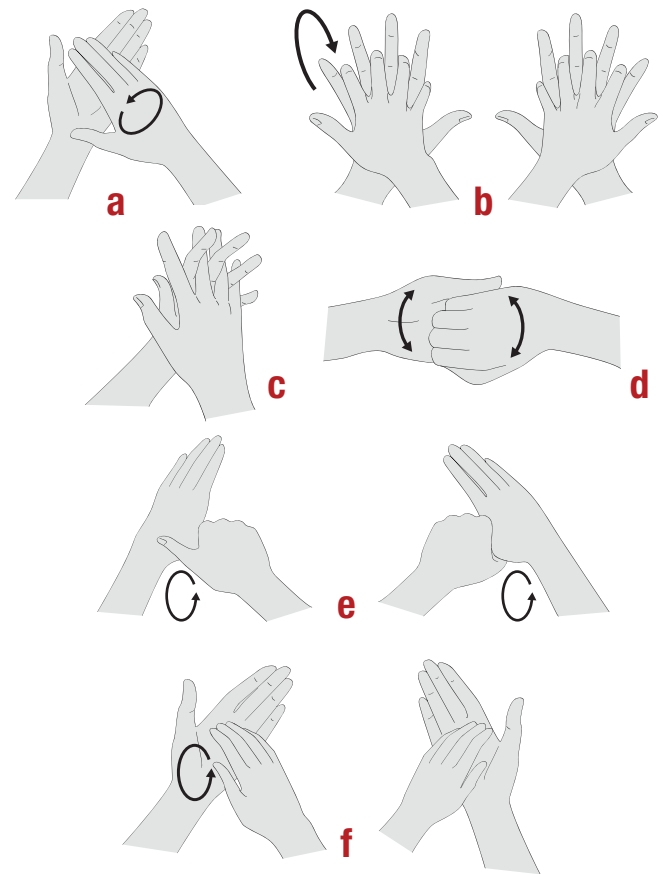


**3** Move to the clean area at the entrance of the isolation unit.

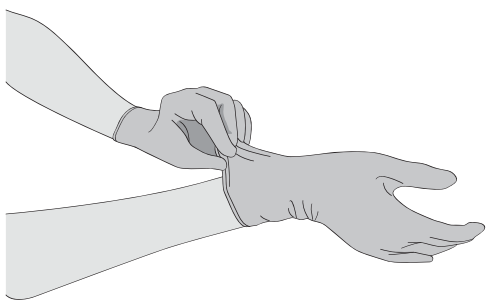
**4** By visual inspection, ensure that all sizes of the PPE set are correct and the quality is appropriate.

**5** Undertake the procedure of putting on PPE under the **guidance and supervision of a trained observer** (colleague).

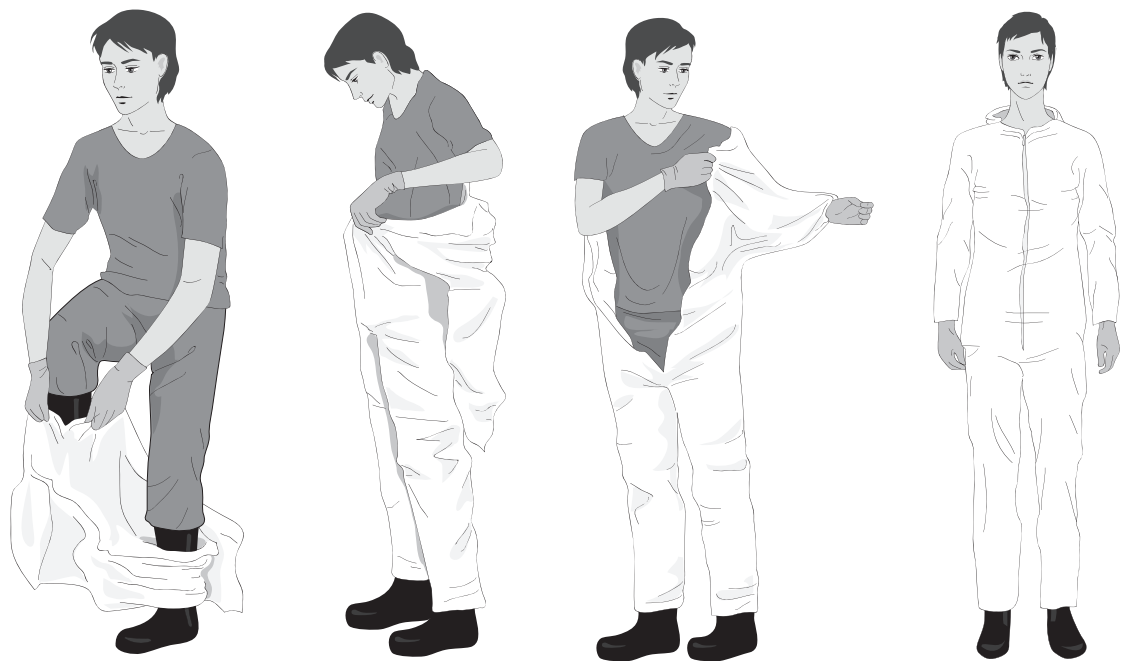
**6** Perform **hand hygiene**.



**7** Put on **gloves** (examination, nitrile gloves).



**8** Put on **coverall**.<sup>2</sup>



**9** Put on **face mask**.



**10** Put on **face shield OR goggles**.



OR



**11** Put on **head and neck covering** surgical bonnet covering neck and sides of the head (preferable with face shield) **OR** hood.



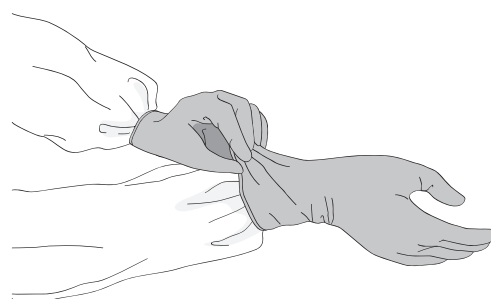
OR



**12** Put on **disposable waterproof apron** (if not available, use heavy duty, reusable waterproof apron).



**13** Put on second pair of (preferably long cuff)<sup>2</sup> **gloves** over the cuff.



<sup>1</sup> If boots are not available, use closed shoes (slip-ons without shoelaces and fully covering the dorsum of the foot and ankles) and shoe covers (nonslip and preferably impermeable)

<sup>2</sup> Do not use adhesive tape to attach the gloves. If the gloves or the coverall sleeves are not long enough, make a thumb (or middle finger) hole in the coverall sleeve to ensure that your forearm is not exposed when making wide movements. Some coverall models have finger loops attached to sleeves.