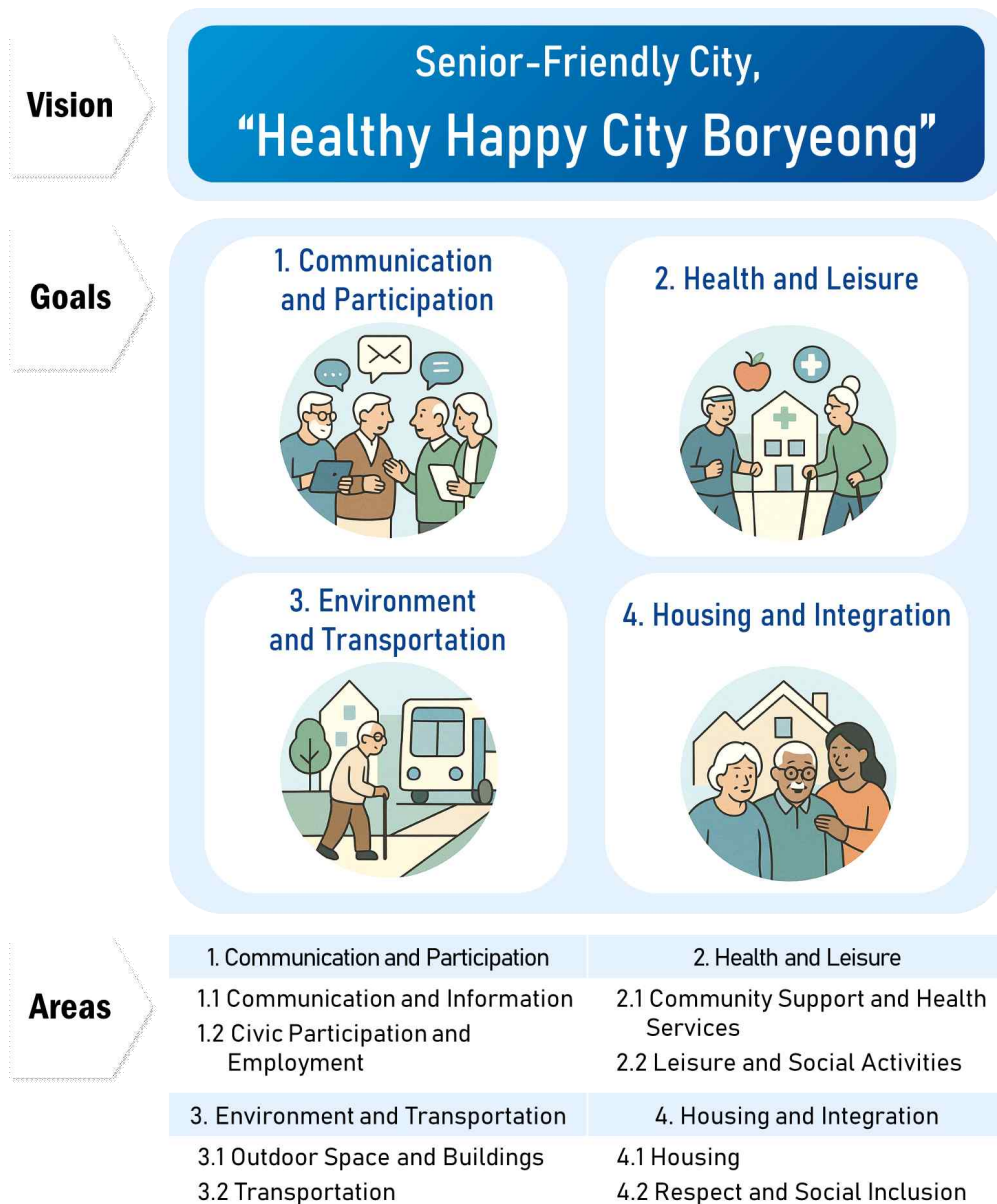


1. Boryeong-si Age-Friendly City Vision Map

■ The vision of Age-friendly city Boryeong-si is ‘Senior-Friendly City, Healthy Happy City Boryeong’. There are four strategic goals under the vision.

- 1) Communication and Participation : Communication and Information, Civic Participation and Employment
- 2) Health and Leisure : Community Support and Health Services
- 3) Environment and Transportation : Outdoor Space and Buildings, Transportation
- 4) Housing and Integration : Housing, Respect and Social Inclusion

Vision Map for an Age-Friendly City of Boryeong



2. Boryeong-si Age-Friendly City Project (Draft) Roadmap

- The implementation roadmap consists of 4 strategic goals, 8 implementation area, and 63 projects as follows
- However, the second phase plan may be subject to changes after the first phases plan (3-year plan) depending on Boryeong City's financial planning and human resource constraints

1) Goal 1 : Communication and Participation

■ 1.1 Communication and Information : 5 projects

ID	Project Name	2025	2026	2027
1-1-1	Mobile Citizen Communication Service ("Onsim-tong")	◎	◎	◎
1-1-2	"Municipal Administration Monitor" - Citizens Creating Boryeong City Together!	◎	◎	◎
1-1-3	Strengthening Connections and Linkage Support to Resolve Social Isolation	◎	◎	◎
1-1-4	Mobile Welfare Counseling Office - On-site Solution for Welfare Concerns	◎	◎	◎
1-1-5	Boryeong Silver Line Friends (New Program)			

■ 1.2 Civic Participation and Employment : 9 projects

ID	Project Name	2025	2026	2027
1-2-1	Boryeong City Employment & Start-up Fair	◎	◎	◎
1-2-2	Building Job Governance and Providing Customized Employment Services	◎	◎	◎
1-2-3	Promoting Career-type Job Programs for Middle-aged People to Support Second Life Career	◎	◎	◎
1-2-4	Job Programs Utilizing Middle-aged and Older Adults' Career Experience	◎	◎	◎
1-2-5	Inducing Labor Market Entry through Operation of Various Public Job Programs	◎	◎	◎
1-2-6	Supporting Traditional Market Manager Operations and Other Initiatives	◎	◎	◎
1-2-7	Providing Customized Senior Jobs to Strengthen Income Security	◎	◎	◎
1-2-8	Upcycling Space for Senior Job Support (New Program)			
1-2-9	Senior Human Resources Survey (New Program)			

2) Goal 2 : Health and Leisure

■ 2.1 Community Support and Health Services : 13 projects

ID	Project Name	2025	2026	2027
2-1-1	Support for Daily Care Service in Vulnerable Areas	◎	◎	◎
2-1-2	Strengthening Comprehensive Care System for Elderly Living Alone	◎	◎	◎
2-1-3	Enhancing Telemedicine Services in Medically Underserved Areas	◎	◎	◎
2-1-4	Customized Home-visit Health Management Services for Vulnerable Groups	◎	◎	◎
2-1-5	AI & IoT-based Senior Health Management Program	◎	◎	◎
2-1-6	Hospital Accompaniment Service for Elderly Living Alone	◎	◎	◎
2-1-7	From Prevention to Recovery Mental Health Programs	◎	◎	◎
2-1-8	Providing Customized Dementia Care Services through Dementia Care Centers	◎	◎	◎
2-1-9	Missing Prevention and Return Support Program for Dementia Patient	◎	◎	◎
2-1-10	Public Health Program Operation Support for Public Long-term Care Hospitals	◎	◎	◎
2-1-11	Boryeong Safe Living Guardian Kits (New Program)			
2-1-12	Boryeong-style Healing Farm (New Program)			
2-1-13	Boryeong-style Hospital Accompaniment Service (New Program)			

■ 2.2 Leisure and Social Activities : 6 projects

ID	Project Name	2025	2026	2027
2-2-1	Expanding Operation of Visiting Senior Universities for Active Aging	◎	◎	◎
2-2-2	Substantive Senior Center Management to Improve Quality of Life for the Elderly	◎	◎	◎
2-2-3	Mobile Digital Learning Centers for Seniors	◎	◎	◎
2-2-4	Community Self-Governance Activation Project with Residents through Communication and Collaboration	◎	◎	◎
2-2-5	“Filling Islands with Health and Culture” Island Residents' Welfare & Culture Center Construction	◎	◎	◎
2-2-6	Large-scale Sports Facilities to Realize Sports Welfare Construction	◎	◎	◎

3) Goal 3 : Environment and Transportation

■ 3.1 Outdoor Space and Buildings : 12 projects

ID	Project Name	2025	2026	2027
3-1-1	Healthy Green Shelter, Center of Happy Change! Central Park Development	◎	◎	◎
3-1-2	Forest Water Play Facility Development Project Using Abandoned Mine Tunnels at Okma Neighborhood Park	◎	◎	◎
3-1-3	Distinctive Green Play Spaces! Urban Park Remodeling Project	◎	◎	◎
3-1-4	Creating Village Theme Gardens that Embrace Nature and Reflect Local Characteristics	◎	◎	◎
3-1-5	Creating Healthy Tree-lined Streets to Respond to Climate Change	◎	◎	◎
3-1-6	Urban Park Reorganization to Enhance Quality of Life	◎	◎	◎
3-1-7	Creating Boryeong Won(Wonsando) Street with Residents	◎	◎	◎
3-1-8	Daecheon Beach Dwitbaksan Park Yellow Clay Trail Construction	◎	◎	◎
3-1-9	Boryeong Fall Prevention Guidelines (New Program)			
3-1-10	Small Park Development Project (New Program)			
3-1-11	Boryeong City Traffic Accident Vision Zero (New Program)			
3-1-12	Senior Welfare Center Construction (Northern District) (New Program)			

■ 3.2 Transportation : 8 projects

ID	Project Name	2025	2026	2027
3-2-1	City Bus Route Reorganization	◎	◎	◎
3-2-2	Installation of New Smart Bus Stops in Cheonbuk-myeon	◎	◎	◎
3-2-3	Bus Stop Repair and New Installation	◎	◎	◎
3-2-4	Conversion to Feeder and Arterial Routes Following Public Bus Operation in Misan-myeon	◎	◎	◎
3-2-5	Introduction of Public Taxi Service in Cheongso-myeon	◎	◎	◎
3-2-6	Expanding Support for Voluntary License Return by Elderly Drivers	◎	◎	◎
3-2-7	Strengthening Education and Promotion to Improve Traffic Culture Index	◎	◎	◎
3-2-8	Proactive and Efficient Installation and Maintenance of Traffic Safety Facilities	◎	◎	◎

4) Goal 4 : Housing and Integration

■ 4.1 Housing : 4 projects

ID	Project Name	2025	2026	2027
4-1-1	Remodeling of old Public Rental Housing	◎	◎	◎
4-1-2	Apartment Management Fee Support Project for Creating Comfortable Residential Environment	◎	◎	◎
4-1-3	Rural Vulnerable Groups Housing Environment Improvement Project Including Home Repairs	◎	◎	◎
4-1-4	Housing Benefit Support Project for Low-income Marginalized Groups	◎	◎	◎

■ 4.2 Respect and Social Inclusion : 6 projects

ID	Project Name	2025	2026	2027
4-2-1	Promoting Transparency Enhancement and Substantialization of Long-term Care Institutions	◎	◎	◎
4-2-2	Free Meal Support for Seniors at Village Senior Centers During Farming Season	◎	◎	◎
4-2-3	Expanding Operation of Human Rights Guardians at Long-term Care Facilities	◎	◎	◎
4-2-4	Elder Abuse Prevention Project (New Program)			
4-2-5	Age-Friendly City Town Hall Meeting (New Program)			
4-2-6	Boryeong City Healthy Middle-age Declaration Ceremony (New Program)			

3. Setting performance indicators

- Performance of each project will be evaluated by three methods: ① Individual project evaluation, ② Evaluation by department, ③ Policy evaluation
- Individual project evaluation (quantitative + internal)
 - Evaluation criteria utilize four criteria: achieved, in progress, insufficient, and modification

Criteria for evaluation by project

Classification	Details
Achieved (●)	Target performance achieved by more than 100%
In Progress (◐)	Progressing on project to achieve goals
Insufficient (○)	Project which has not been promoted or is deemed difficult to proceed
Modification (▷)	Replacing the targeted performance

- Evaluation by department (qualitative + internal)
 - Evaluation by Department for Project uses ‘Management by Object (MBO)’
 - Evaluation of Project Objectives and Objectives for the implementation year according to the Annual Plan for the Age-Friendly City
 - Reflect On evaluation areas, such as the fidelity of the contents of the plan for creating an Age-friendly city, appropriateness of the implementation process, achievement of goals, and the participation and satisfaction of local residents

Criteria for Evaluation by Department for Project

Evaluation	Performance Indicators		Score
Planning	Connectivity	·Relation to the Basic plan for a low birth rate and aging society	7
	Objective project selection	·Similarity to or overlap with other projects	6
	Administration and Finance Plan	·Enactment of project-related ordinances, budgeting, and etc.	7
Implementation	Input /Output	·Appropriate performance index calculation and budget input	10
	Procedure	·Appropriate implementation plan execution procedure (including implementation of changes)	10
	Monitoring	·Adequate monitoring of project implementation	10
Goal Achievement	Achievement of target performance	·Achievement of target performance (target level)	10
	Budget execution (% of the plan)	·Budget execution rate against the plan	10
	Excellence in Performance	·Creation of Age-friendly environment and the necessity to continue	10
Participation and satisfaction of local residents	Private sector participation and cooperation	·Efforts to encourage participation and to collect opinions of the residents / public-private cooperation	7
	Contributions	·Contribution to the establishment of age-friendly environment and creation of an cooperative atmosphere	7
	Local Residents satisfaction	·Satisfaction of residents, including the elderly, on projects	6
Total			100

■ Policy evaluation (qualitative + external)

- Policy evaluation will be carried out by a survey on citizens and elderly, using WHO checklist.
- Response will be measured in 5 point Likert scale
- Evaluation will be carried out biannually to track long term trends
- Policy evaluation is carried biannually, and uses a survey method in order to compare and analyze a long-term trend