

# The 3<sup>rd</sup> Action Plan of the Age-friendly City of Dong-gu District, Gwangju Metropolitan City

## I. Overview

□ Vision and business status of the 3<sup>rd</sup> phase plan

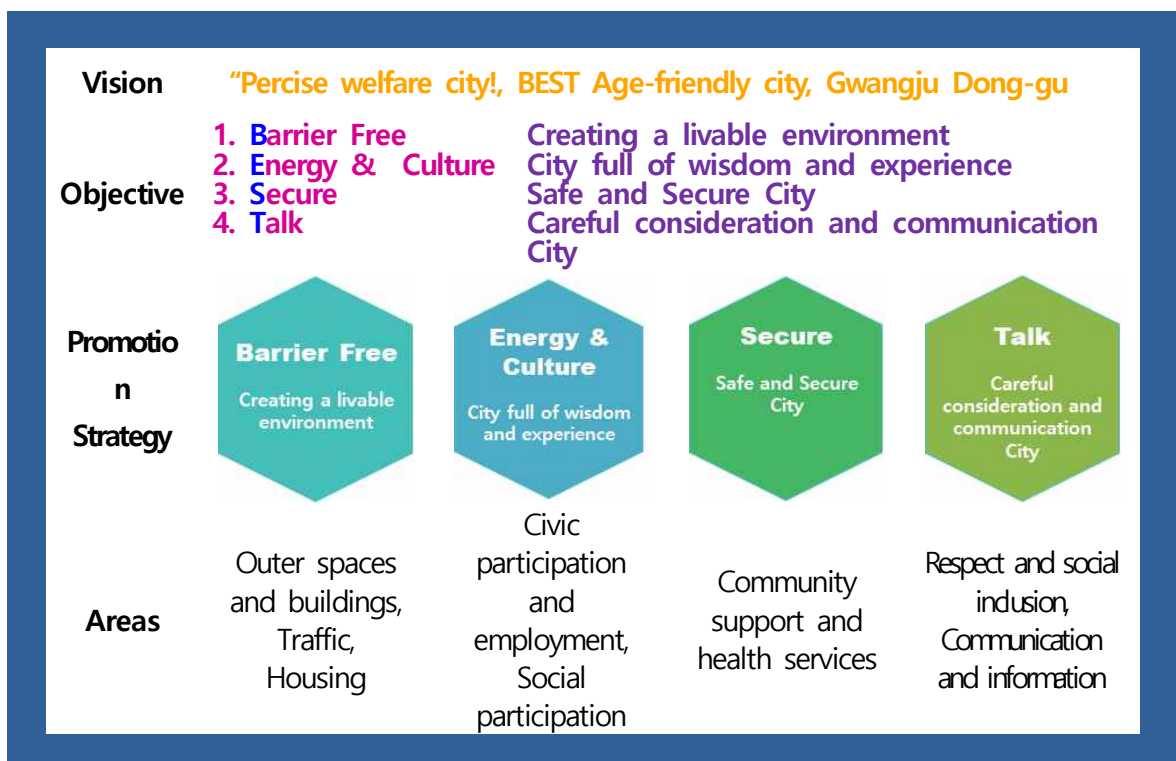
○ Dong-gu District, Gwangju Metropolitan City is the Member of Global Network for Age-friendly Cities and Communities, and retaining its qualifications to 1st(3 year) and 2nd(5 year). For intends to establish and implement the 3rd action plan in accordance with 4 implementation strategies and 8 areas in compliance with WHO guidelines in order to maintain membership of WHO Global Network for Age-friendly Cities and Communities.

- Vision : ‘Percise welfare city!, BEST Age-friendly city, Gwangju Dong-gu’

- Promotion period : 2025. ~ 2029. (5years)

- Promotion Strategies

- Barrier Free(Creating a livable environment)
- Energy & Culture(City full of wisdom and experience)
- Secure(Safe and Secure City)
- Talk(Careful consideration and communication City)



3<sup>rd</sup> Plan Business Status

○ Promotion projects : Compliance with WHO guidelines, 40 projects in 8 areas

<Table 1-1> Age friendly City 3<sup>rd</sup> Project Status

WHO 8 major areas	Areas for 3 <sup>rd</sup> phase	3 <sup>rd</sup> project number(40)	3 <sup>rd</sup> Project Objective
Outer spaces and buildings	Outer spaces and buildings	7	Barrier Free (Creating a livable environment)
Traffic	Traffic	5	
Housing	Housing	4	
Civic participation and employment	Civic participation and employment	4	Energy & Culture (City full of wisdom and experience)
Social participation	Social participation	5	
Community support and health services	Community support and health services	5	Secure (Safe and Secure City)
Respect and social inclusion	Respect and social inclusion	5	Talk (Careful consideration and communication City)
Communication and information	Communication and information	5	

○ Promoter : 13 Department

<Table 1-2> Current Status of the Department for the 3<sup>rd</sup> Promotion of the Age-Friendly City Project

Department	Projet	Department	Project
Climate Environment Div.	1	Construction Div.	2
Civil Service Div.	1	Blue City Div,	1
Aged·Disabled Welfare Div.	24	Transportation Div.	3
Integrated Care Div.	1	Women·Children Div.	1
Health Policy Div.	1	Health Services Div.	2
Humanities City Div.	1	Welfare Policy Div.	1
Promotion Div.	1	SUM	40

Considerations for establishing the 3<sup>rd</sup> phase.

○ The 1<sup>st</sup> and 2<sup>nd</sup> plan and results for the creation of age-friendly city, and new project for 2025

- Results of the survey for the establishment of 3<sup>rd</sup> plan in 2024, following the WHO guideline of Age-friendly rate in 8 areas
- Expert advisory comments and departmental review comments
- Commitment of Mayor of Dong-gu district of the 8<sup>th</sup> popular election, the 5<sup>th</sup> Community Security Plan of Dong-gu, Gwangju Metropolitan City(2023-2026)
- Status of the elderly population in Gwangju Dong-gu and Current project Status of Aged·Disabled Welfare department

## II. Detailed projects for the 3<sup>rd</sup> phase

### □ Detailed projects

- Compliance with WHO guidelines, 40 projects in 8 areas, 46 indicators, 197,499(95%) Objective, Budget 141, 144 Million KRW

<Table 1-3> 3<sup>rd</sup> Project of Age-Friendly City Contents

Objective	Area	projects/indicators	Objective (number, people, achievement rate)	Budget (million KRW)
Barrier Free	Outer spaces and buildings	7 projects/9 indicators	14,840	17,340
	Traffic	5 projects/6 indicators	43,550	3,577
	Housing	4 projects/5 indicators	26,163	5,332
Energy & Culture	Civic participation and employment	4 projects/4 indicators	19,541	105,149
	Social participation	5 projects/5 indicators	17,575	576
Secure	Community support and health services	5 projects/5 indicators	46,200 (95%)	6,570
Talk	Respect and social inclusion	5 projects/7 indicators	21,320	1,431
	Communication and information	5 projects/5 indicators	8,260	1,169
계		40projects/46 indicators	197,449 (95%)	141,144

### III. Status of detailed projects by area

Promotions Strategies 1: Barrier Free(Livable environment)

○ Outer spaces and buildings

- The 3rd plan intends to promote 7 projects in the outer spaces and buildings and 2 of them are new projects
- Estimated budget of KRW 17,040 million for 5 years(2025–2029)

<Table 1-4> Detailed project in the outer spaces and buildings

No.	Detailed project	Budget(KRW 1 million)					Remarks
		2025	2026	2027	2027	2029	
1	Safe and pleasant public toilet management	120	134	139	154	159	
2	Securing barrier-free walkways	2,580	2,580	2,580	2,580	2,580	
3	Road lighting management	451	452	453	454	455	
4	providing special customer service for the elderly	24	24	24	24	24	
5	Enlarged Operation of Neritjae Family Forest	88	88	88	88	88	
6	Expansion of barrier-free Facilities for the vulnerable in transportation	18	6	8	20	12	NEW
7	Bicycle (kickboard) Safe Culture Creation Project	169	169	169	169	169	NEW
TOTAL		3,450	3,453	3,461	3,489	3,487	

○ Traffic

- The 3rd plan intends to promote 5 projects in the Traffic and 3 of them are new projects
- Estimated budget of KRW 3,576.6 million for 5 years(2025–2029)

<Table 1-5> Detailed project in the Traffic

No.	Detailed Project	Budget(KRW 1 million)					Remarks
		2025	2026	2027	2027	2029	
1	Management of transportation facilities	260	260	260	260	260	Existing Integration
2	Runs when call them "Happiness Dong-gu Taxi" Project	129.6	130	132	134	136	
3	Improvement of Environment for Bus Stop	51	51	51	51	51	NEW
4	Dong-gu 1472 immediate call Operation	84	84	84	84	84	NEW
5	Traditional Market Shopping Helpers	169	169	169	169	169	NEW
TOTAL		712.6	713	715	717	719	

○ Housing

- The 3rd plan intends to promote 4 projects in the Housing and 1 of them is new projects
- Estimated budget of KRW 5,332 million for 5 years(2025–2029)

<Table 1-6> Detailed project in the Housing

No.	Detailed Project	Budget(KRW 1 million)					Remarks
		2025	2026	2027	2027	2029	
1	Support for Housing Improvement "Hyo dispatch" project	37	37	37	37	37	
2	Housing counseling support with Renovation of elderly-friendly housing	700	700	703	703	703	Existing Integration
3	Strengthen Emergency Safety Service Support	229	229	240	240	280	
4	Operation of the Village Residential Repair Call Center	84	84	84	84	84	NEW
TOTAL		1,050	1,050	1,064	1,064	1,104	

Promotions Strategies 2: Energy & Culture(City full of life)

○ Civic participation and employment

- The 3rd plan intends to promote 4 projects in the Civic participation and employment

and 1 of them is new projects

- Estimated budget of KRW 105,151 million for 5 years(2025-2029)

<Table 1-7> Detailed project in the Civic participation and employment

No.	Detailed Project	Budget(KRW 1 million)					Remarks
		2025	2026	2027	2027	2029	
1	Operate senior talent sharing 「100-Volunteer Corps」	5	5	5	5	5	
2	Revitalization of senior job programs 「100-workplace」	15,660	15,662	15,664	15,664	15,666	
3	strengthen support system for reemployment of senior citizens Project	5,300	5,300	5,400	5,400	5,400	
4	Hope Retirement Class Operation	2	2	2	2	2	NEW
TOTAL		20,967	20,969	21,071	21,071	21,073	

○ Social participation

- The 3rd plan intends to promote 5 projects in the Social participation and 2 of them is new projects

- Estimated budget of KRW 576 million for 5 years(2025-2029)

<Table 1-8> Detailed project in the Social participation

No.	Detailed Project	Budget(KRW 1 million)					Remarks
		2025	2026	2027	2027	2029	
1	Monitor Group on Age-friendlyCity Developemnet	3	3	3	3	3	
2	Elderly Care Safe net “Walk around with 100-year friend” (※ Integrated with the existing ‘100-friend in our villiage’ project)	20	20	20	20	20	
3	Operate Visithing Theater	3	3	3	3	3	
4	Activation of 100-Club(Specialize project by age group)	80	80	80	80	80	NEW
5	Generational empathy programs with 3 generation	8	8.5	9	9.5	10	NEW
TOTAL		114	115	115	116	116	

Promotions Strategies 3: Secure(Protected City)

Community support and health services

- The 3rd plan intends to promote 5 projects in the Community support and health services
- Estimated budget of KRW 6,570 million for 5 years(2025–2029)

<Table 1–9> Detailed project in the Community support and health services

No.	Detailed Project	Budget(KRW 1 million)					Remarks
		2025	2026	2027	2027	2029	
1	Live alone Elderly Suicide prevention project	21	21	21	21	21	
2	Accompany with Dementia! Free from worries about patients and their family	400	400	400	400	400	
3	Support Services for Daily Living (free meal, lunch box, mobile laundry)	759	759	759	759	759	Existing Integration
4	Oral health care for the elderly	2	2	2	2	2	
5	Personalized health management Services using ICT	132	132	132	132	132	
TOTAL		1,314	1,314	1,314	1,314	1,314	

Promotions Strategies 4: Talk(Consideration and Communication City)

Respect and social inclusion

- The 3rd plan intends to promote 5 projects in the Respect and social inclusion and 2 of them are new projects
- Estimated budget of KRW 1,431 million for 5 years(2025–2029)

<Table 1–10> Detailed project in the Respect and social inclusion

No.	Detailed Project	Budget(KRW 1 million)					Remarks
		2025	2026	2027	2027	2029	
1	Elderly life-long Publishing	80	80	80	80	80	
2	Operate Dong-gu type keepsake arrangement business	12	14	14	15	15	NEW
3	Design happy life together! Senior University and 100-School Operation	26	26	28	28	28	Existing Integration
4	「Communication center」 Operation	81	81	81	81	81	
5	Operate 「Experience Class for the Elderly with Disabilities」	84	84	84	84	84	NEW
TOTAL		283	285	287	288	288	

○ Communication and information

- The 3rd plan intends to promote 5 projects in the Respect and social inclusion and 1 of them is new projects

- Estimated budget of KRW 1,169 million for 5 years(2025–2029)

<Table 1–9> Detaied project in the Communication and information

No.	Detailed Project	Budget(KRW 1 million)					Remarks
		2025	2026	2027	2027	2029	
1	Customized Senior Information Class	70	70	70	70	70	
2	Operation of visiting kiosk experience class	30	31	31	32	32	
3	Information providing operations system	29	30	30	30	30	
4	Real life starts at 60 6.5DAY”	18	18	18	20	20	
5	Operate Dong-gu 100-year promotion team	84	84	84	84	84	NEW
TOTAL		231	233	233	236	236	

#### IV. Detailed Status by project

1-1	Safe and pleasant public toilet management		
Remarks	Existing	Promote Department	Climate Environment Div.

Providing a safe and pleasant public toilet environment to users by maintaining cleanliness of public and open toilets and maintaining safety facilities at all times

#### ■ Project Overview

- Providing a safe and pleasant public toilet environment through the management of public and open toilets
- Promote the convenience of users by securing public and open toilets

#### ■ Project Content

- Project period: 2025 ~ Existing
- Project target: 195(public toilet 24, open toilet 171)
- Project Content
  - Public and open toilets management(Cleaning, maintenance, inspection, etc)
  - New construction and renovation of public toilets
- Propulsion Systems and Methods
  - Management and inspection of public and open toilets : often
  - Contract for recruitment and service of term workers for cleaning and management of public toilets : 14 Workers/1 Service
  - Support for convenience goods in public and open toilets(110) : quarter
  - Project to Support Private Open Toilets(Renovation of Open Toilet Facilities) : 2 ~ 4
  - Crackdown on illegal cameras : twice a week

■ Annual implementation plan

Remarks		Annual implementation plan (Unit : KRW 1 million)				
		2025	2026	2027	2028	2029
Renovate public toilets	Project Overview (Improvement)	2	2	2	2	2
	Budget	41	50	50	60	60
Support for convenience goods in public and open toilets	Project Overview (Support)	110	115	120	125	130
	Budget	79	84	89	94	99

■ Expected effect

- Improve clean city image through clean public toilet maintenance

<b>1-2</b>	<b>Securing barrier-free walkways</b>		
Remarks	Existing	Promote Department	Construction Div.

Improvement of residents' living benefits and provision of a safe and pleasant walking environment through expansion of urban infrastructure and maintenance of urban walking roads

■ **Project Overview**

- Provide a safe and pleasant road environment to local residents by expanding the urban living road network and maintaining pedestrian roads

■ **Project Content**

- Expansion of Living Road Network
  - Project period: 2025 ~ Existing
  - Project target: Roadways, sidewalks, railings, overpasses, bridges, etc. in the jurisdiction
  - Budget : 450 million KRW
  - Road patrols, daily civil complaints, and small-scale contract work for damaged areas are carried out in parallel

< Road Status >

(Unit: site/km)

Remarks	Total Plan		Opening		Un-opened		Remarks (Opening Rate)
	Route	Extension	Route	Extension	Route	Extension	
SUM	587	145.5	418	115.5	169	30	85.0%
City road (Width 20m or more)	19	20.6	16	19.1	3	1.5	92.7%
county road (Width 20m or more)	568	124.9	402	96.4	166	28.5	77.2%

○ Maintenance of Road Facilities

- Project period: 2025 ~ Existing
- Project target: sidewalks, roadways, railings, overpasses, bridges, etc. in Dong-gu district
- Budget: 580 million KRW(repair, road maintenance)
- Project Content
  - Maintenance of existing roads and sidewalk facilities and repair

- Create sidewalks that are not separated from the pedestrian road, and create braille blocks for the vulnerable
- Demoliate a land bridge(3 unit)
  - \* 2025 ~ 2026: 2 units(donaegi market, Nam Elementary School) / mid-long term review : 1 unit(Gyelim-dong Emart)

■ **Annual implementation plan**

Remarks		Annual implementation plan (Unit : KRW 1 million)				
		2025	2026	2027	2028	2029
living road network expansion	Project Overview (Number of impornvments)	10	10	10	10	10
	Budget	2,000	2,000	2,000	2,000	2,000
pedestrain maintenance	Project Overview ( Number of maintenance )	50	50	50	50	50
	Budget	580	580	580	580	580

■ **Expected effect**

- Contribute to the creation of a safe and pleasant walking environment by preemptively resolving chronic complaints of walking discomfort and preventing accidents in advance

<b>1-3</b>	<b>Road lighting management</b>		
Remarks	Existing	Promote Department	Construction Div.

Create a safe walking environment by minimizing inconvenience to residents by promptly handling complaints about breakdowns such as street and security lights and establishing security lights in vulnerable areas such as crime areas

■ **Project Overview**

- Promote prompt resolution of civil complaints on inconveniences of street and security light
- New construction and replacement of street and security lights in areas vulnerable to lighting, such as crime areas

■ **Project Content**

- Project period: 2025 ~ Existing
- Project target: 9,885(4,904 street light, 4,590 security light, 391 park light)
- Budget : 451 million (City budget 131, District budget 320)
- Project Content
  - Prompt handling of complaints of failure and inconvenience : 2,200 cases per year
  - Elimination of Light Vulnerable Areas for Improving Night Walking Environment
  - Joint Inspection and Facilities Maintenance of Road Lighting Electrical Safety Construction
  - Renewal of LED Lighting to Improve Old Road Lighting Facilities

■ **Annual implementation plan**

Remarks		Annual implementation plan (Unit : KRW 1 million)				
		2025	2026	2027	2028	2029
Road lighting management	Project Overview (new and replace LED)	373	374	375	376	377
	Budget	451	452	453	454	455

▣ **Expected effect**

○ Minimize inconvenience to residents by promptly handling complaints about breakdowns such as street and security lights

○ Creating a Safe Night Walking Environment by Replacing and Installing Old Road Lighting

<b>1-4</b>	<b>providing special customer service for the elderly</b>		
Remarks	Existing	Promote Department	Civil Service Div.

Operate a civil service center where comfortable and pleasant residents are happy by providing resident-friendly administrative services and creating an environment for communicating and empathizing with the level of the socially disadvantaged

#### ■ Project Overview

- Providing customized administrative services for the socially disadvantaged, such as the elderly and the disabled, etc
- Operate the Green Healing Civil Service Office as a space of emotion and healing by forming a pleasant and safe civil service environment

#### ■ Project Content

- Project period: 2025 ~ Existing
- Project target: Vulnerable groups, such as the elderly and the disabled, etc
- Project Content
  - 「Resolve Together」 Operate Honorary Administration (Counseling) in our city
  - 「Divide Together」 Operate 'priority consideration window' for the socially disadvantaged
  - 「Think Together」 "Operation of a counseling service center" for civil petitioners who need counseling
  - 「Healing Together」 Create a comfortable space using health checks and health tea
- Propulsion Systems and Methods
  - Operate Honorary Administration (Counseling) in our city : Support for senior citizens to prepare civil petition documents, guidance on the use of unmanned civil petition issuing machines, etc by selecting volunteer
  - Operate priority consideration for socially disadvantaged : When socially disadvantaged(elderly, pregnant women, disabled, etc) visited, carry out in preference to other complaints
  - Operation of a counseling service center : Consultation on real estate such as real estate contracts, cadastral surveys, land movement,

individual publicity announce on land prics, etc

- Provision of rest area in the civil service room : Create a comfortable and pleasant civil service space by managing and operating health tea, massagers, blood pressure machines, and carbon dioxide-reducing air purifiers

■ **Annual implementation plan**

Remarks		Annual implementation plan (Unit : KRW 1 million)				
		2025	2026	2027	2028	2029
Providing special customer service for the elderly	Project Overview ( Honorary Administration (Counseling) Operation )	10	10	10	10	10
	Budget	24	24	24	24	24

■ **Expected effect**

- Help to prepare complex documents and use unmanned civil petitions that are difficult to use, and solve the difficulties that the elderly face in their daily lives through various administrative consultations
- By creating a comfortable civil service environment that anyone can easily enter and exit, it provides a space for the elderly to communicate with others to relieve a sense of social isolation

<b>1-5</b>	<b>Enlarged Operation of Neritjae Family Forest</b>		
Remarks	Existing	Promote Department	Blue City Div.

To promote the health of the elderly and improve the quality of life by operating programs for the elderly in the Nureitjae

■ **Project Overview**

- Ensure ease, safety, and convenience as a resting place for the elderly to access the park
- Provide various forest programs to contribute to the emotional stability of elderly residents and improve the quality of life and form a social safety net by expanding participation opportunities

■ **Project Content**

- Project period : 2025 ~ Existing
- Project target : Any Dong-gu resident(Separate program operation for senior citizens aged 65 or older)
- Project Content
  - Operate Forest education program for Dong-gu residents at Nureitjae Children's Forest Experience Center and Luxury Forest Road
  - Healing programs such as forest ecology experience, forest trail walking, and making using natural water
  - athletic programs such as recreation, gymnastics, and exercise
- Propulsion Systems and Methods
  - Gwangju Dong-gu : Selection and management of business plans and operating institutions (specialized forest welfare enterprises)
  - Operating Institution : Recruitment of participants and operate forest education programs

■ **Annual implementation plan**

Remarks		Annual implementation plan (Unit : KRW 1 million)				
		2025	2026	2027	2028	2029
Enlarged Operation of Neritjae Family Forest	Project Overview (65 or older population's Participation in program)	1,500	1,500	1,500	1,500	1,500
	Budget	88	88	88	88	88

■ **Expected effect**

- Promote the health and quality of life of the elderly through various forest education and experience programs

<b>1-6</b>	<b>Expansion of barrier-free Facilities for the vulnerable in transportation</b>		
Remarks	Existing	Promote Department	Aged·Disabled Welfare Div.

Establishment and implementation of a comprehensive plan for inspection, supplementary and improvement of convenience facilities to prevent inconvenience to the transportation vulnerable such as elderly, disabled, pregnant women, etc

■ **Project Overview**

- Create a living environment where the disabled and local residents can move freely without physical restrictions by strengthening the installation of convenience facilities for the disabled
- Develop an age-friendly city without inconvenience for the transportation vulnerable like disabled, elderly, pregnant, stroller using resident to move safely and conveniently

■ **Project Content**

- Project period: 2025 ~ Existing
- Project target: Subject to the installation of convenience facilities under the Act on the Convenience of Persons with Disabilities 184(Public building 144, Park 40)
- Project Content
  - Strengthening the installation of convenience facilities for persons with disabilities in public buildings and certifying the living environment without obstacles(BF preliminal certification, certified)
  - Consultation with the department in charge of convenience facilities for persons with disabilities on the design process and completion inspection of infrastructure and public facilities such as pedestrian paths
- Propulsion Systems and Methods
  - Conduct a joint field visit survey by the basic center for technical support for convenience facilities for the disabled and preliminary inspection personnel for convenience facilities for the disabled
  - Discuss measures to supplement and strengthen convenience facilities for persons with disabilities and establish directions for implementation through meetings by management departments

■ **Annual implementation plan**

Remarks		Annual implementation plan (Unit : KRW 1 million)				
		2025	2026	2027	2028	2029
Barrier-free facilities expansion project	Project Overview ( Number of Unit )	pedestrian path (15)	apartment house (5)	public phone, Mailbox (7)	Bus stop (3)	small-scale neighborhood facilities (15)
	Budget	18	6	8	20	12

■ **Expected effect**

- Contribute to the improvement of convenience living support for the disabled and local residents by strengthening the installation of convenience facilities for the disabled

<b>1-7</b>	<b>Bicycle (kickboard) Safe Culture Creation Project</b>		
Remarks	NEW	Promote Department	Aged·Disabled Welfare Div.

Bicycle(kickboard) for the convenience of residents are effectively managed to create a safe culture for users and pedestrians

### ■ Project Overview

- Safety management of bicycle(kickboard) to provide convenience of residents
- Active participation of users and residents to build of Dong-gu like safety culture

### ■ Project Content

- Project period: 2025 ~ Existing
- Project target: residents, Dong-gu residents using bicycles(kickboards)
- Project Content
  - Safety education and safety management promotion activities in areas where bicycles (kickboards) are frequently used, trails, etc
  - Safety management: Activities to improve safety problems such as sudden stop after high-speed driving, sudden stop after rapid acceleration, sudden stop after rapid acceleration, bicycle road, road surface condition, illegal parking, and variable speed of users
  - Safety education and promotion: Safe rules of use, , distribution of warning lights for bicycle rear-end
- Propulsion Systems and Methods
  - Gwangju Dong-gu : Establishment of a general plan for the operation of bicycle (kickboard) safety culture projects with Operation of performance institution of senior job program
  - Performance institution of senior job program : Recruitment and selection of participants

■ **Annual implementation plan**

Remarks		Annual implementation plan (Unit : KRW 1 million)				
		2025	2026	2027	2028	2029
Bicycle (kickboard) Safe Culture Creation Project	Project Overview (Number of Promotion)	1,000	1,000	1,000	1,000	1,000
	Budget	169	169	169	169	169

■ **Expected effect**

- Contribute to providing convenience to residents by creating a safety culture of bicycles (kickboards)

<b>2-1</b>	<b>Management of transportation facilities</b>		
Remarks	Existing	Promote Department	Transportation Div.

Preventing traffic accidents and promoting the convenience of residents with weak pedestrians through rapid maintenance and new installation of traffic safety facilities

### ■ Project Overview

- Creating an Age-friendly city through the prevention of accidents through the repair and reinforcement of facilities for the safe walking of the vulnerable
- Create a safe walking environment through rapid maintenance and new installation of traffic safety facilities and create an Age-friendly city through accident prevention

### ■ Project Content

- Managing transportation facilities
  - Project period: 2025 ~ Existing
  - Project target: Traffic safety facilities in less than 20m road within the Dong-gu district
  - Project Content
    - Installation and maintenance of safety facilities in protected areas
    - Road painting and road markings, maintenance of traffic signs, etc
- Crosswalk maintenance
  - Project period: 2025 ~ Existing
  - Project target: Dong-gu crosswalk(435)
  - Project Content
    - Maintenance and new installation of crosswalks in the jurisdiction
- Propulsion Systems and Methods
  - Investigated, improved, and maintained by examining the sites subject to installation of old and new facilities in the traffic safety facilities and children-senior protection zones in the jurisdiction. Continuous maintenance and installation of facilities through a unit price contract for traffic safety facilities in the first half of the year

■ **Annual implementation plan**

Remarks		Annual implementation plan (Unit : KRW 1 million)				
		2025	2026	2027	2028	2029
Safe Management of transportation facilities	Project Overview (Number of repair)	300	300	300	300	300
	Budget	130	130	130	130	130
Crosswalk maintenance	Project Overview (Number of repair)	100	100	100	100	100
	Budget	130	130	130	130	130

■ **Expected effect**

- Secure walking safety and raise awareness through reinforcement of facilities in the protected area
- Prevention of traffic accidents with weak pedestrians through continuous maintenance and reinforcement of traffic safety signs and road markings

2-2	<b>Runs when call 「Happiness Dong-gu Taxi」</b>		
<b>Project</b>			
Remarks	Existing	Promote Department	Transportation Div.

Guaranteeing the right to move and resolving inconvenience of vulnerable person like elderly aged 65 or more, disabled using public transportation

■ **Project Overview**

- Guarantee of right to move through support for taxi expenses for senior citizens aged 65 or older in vulnerable areas for public transportation use
- Improve accessment to main areas for living

■ **Project Content**

- Project period: 2025 ~ Existing
- Project target: 330(Elderly pesons aged 65 or more and disabled person living in Jiwon 2-dong, Jayeon village)
- Project Content
  - Support for taxi transportation expenses by providing the elderly aged 65 or older and the disabled living in the Jayeon village of Jiwon 2-dong with the right to use Happy Dong-gu taxis
- Propulsion Systems and Methods
  - Provide 2 tickets of 5,000 KRW and 10,000 KRW per person per month
  - Basic personal charge 2,000 KRW + Support upt to 5,000 KRW/10,000 KRW for taxi transportation depending on the type of ticket
  - Collecting opinions from residents during the process of use and reflecting them in the project plan for the following year

■ **Annual implementation plan**

Remarks		Annual implementation plan (Unit : KRW 1 million)				
		2025	2026	2027	2028	2029
Happiness Dong-gu Taxi	Project Overview ( Number of usese per year )	6,100	6,200	6,300	6,400	6,500
	Budget	129.6	130	132	134	136

▣ **Expected effect**

- Maximizing the utilization of projects and realizing traffic welfare by increasing the number of annual use of vulnerable groups aged 65 or older

<b>2-3</b>	<b>Improvement of Environment for Bus Stop</b>		
Remarks	NEW	Promote Department	Transportation Div.

Promote the convenience of public transportation for the vulnerable by creating barrier-free stops and improving old facilities stops

### ■ Project Overview

- Promote the convenience of using the transportation vulnerable through the creation of barrier-free stops
- Promote the convenience of public transportation by supporting the renovation of old platform facilities

### ■ Project Content

- Project period: 2025 ~ Existing
- Project target: City bus stop within the jurisdiction(entire 195)
- Project Content
  - Braille blocks, wheelchair marks, remove street trees, remove obstacles
  - Improvement of public transportation convenience by improving old platform facilities (replacement of shelters)
- Propulsion Systems and Methods
  - Public Transportation Div. of Gwangju Metropolitan City, organizations with persons with disabilities, and the selection of bus stops and reflection of opinions

### ■ Annual implementation plan

Remarks		Annual implementation plan (Unit : KRW 1 million)				
		2025	2026	2027	2028	2029
Improvement of Environment for Bus Stop	Project Overview (Number of Units)	10	10	10	10	10
	Budget	51	51	51	51	51

▣ **Expected effect**

- Improvement of citizens' convenience in using public transportation by supporting the renovation of bus stop facilities and improvement of awareness of the vulnerable in transportation

<b>2-4</b>	<b>Dong-gu 1472 immediate call Operation</b>		
Remarks	NEW	Promote Department	Aged·Disabled Welfare Div.

Operate the "Donggu 1472 immediate call" for the elderly who vulnerable to transportation to maintain social life and guarantee a human life by supporting basic mobility rights

■ **Project Overview**

- Maintain daily life by supporting mobility rights for the elderly and vulnerable to transportation
- support safe and reliable retirement life with Dong-gu 1472 immediate call

■ **Project Content**

- Project period: 2025 ~ Existing
- Project target: Residents aged 65 or older living in Dong-gu who are uncomfortable to move, etc
- Project Content: Provide Immediate call service to reach out to residents who are inconvenient to move
  - Service content: Dong-gu Residents who are inconvenient to move, can immediately connect to a call taxi by calling the bar call (tentative name 1588-1472)
  - Provide friendly guidance and comfortable and safe driving services
- Propulsion Systems and Methods
  - Gwangju Dong-gu : Establishment of a general plan for the operation of Dong-gu 1472 immediate Call Business with Management and operation of Performance institution of senior job program
  - Performance institution of senior job program : Recruitment and selection of participants

■ **Annual implementation plan**

Remarks		Annual implementation plan (Unit : KRW 1 million)				
		2025	2026	2027	2028	2029
Operate Dong-gu 1472 immediate call	Project Overview (number of calls)	500	500	500	500	500
	Budget	84	84	84	84	84

■ **Expected effect**

- contributes to providing safe and comfortable retirement by providing Dong-gu 1472 immediate call service

<b>2-5</b>	<b>Traditional Market Shopping Helper</b>		
Remarks	NEW	Promote Department	Aged·Disabled Welfare Div.

By supporting safe shopping for users of traditional markets, it provides vitality in traditional markets and contributes to revitalizing local communities

### ■ Project Overview

- Support for shopping assistants for the convenience of users of traditional markets
- Development of Community Economy by Revitalizing Traditional Markets

### ■ Project Content

- Project period: 2025 ~ Existing
- Project target: Residents aged 65 or older living in Dong-gu who have difficulty to move around or etc
- Project Content: Announcement on NamGwangju market, Dae-in market, Sansu market etc, and Provide services to residents who have difficulty moving around
  - Service Content : Support for getting on and off public transportation, movement of heavy loads and getting on and off of the elderly, and maintenance of cleanliness of convenience facilities in the market
  - Provide friendly guidance and traditional market information
- Propulsion Systems and Methods
  - Gwangju Dong-gu : Establishment of a general plan for the operation of Traditional Market Shopping Helper with Management and operation of Performance institution of senior job program
  - Performance institution of senior job program : Recruitment and selection of participants

■ **Annual implementation plan**

Remarks		Annual implementation plan (Unit : KRW 1 million)				
		2025	2026	2027	2028	2029
Traditional Market Shopping Helper	Project Overview (Users)	1,500	1,500	1,500	1,500	1,500
	Budget	169	169	169	169	169

■ **Expected effect**

- Contributing to the revitalization of the traditional market and the development of the local community economy through a project to support traditional market shopping helper

<b>3-1</b>	<b>Support for Housing Improvement “Hyo dispatch” project</b>		
Remarks	Existing	Promote Department	Aged-Disabled Welfare Div.

Old life with high satisfaction by supporting appropriate measures to cope with inconveniences that frequently occur in the daily lives of elderly living alone and vulnerable elderly households

### ■ Project Overview

- Help improve the residential environment to live in a clean and hygienic environment
- Support for emotional stability through consultation and support for concerns

### ■ Project Content

- Project period: 2025 ~ Existing
- Project target: About 400 residents aged 65 or older living in Dong-gu
- Project Content
  - Repairs to home appliances and replacement of non-repairable household items
  - Support for light bulb replacement and small wallpapers, etc
  - Consultation support on inconveniences and grievances
  - Recruitment of volunteers and offer opportunities to participate in local volunteer activities
- Propulsion Systems and Methods
  - Grant of Hyo dispatch project subsidies(district → Dong-gu Senior Welfare Center)
  - Applications and acceptance of applicants(subjects ▶ Welfare Center ) → Service offering plan and consultation(Welfare Center) → Offer Service(Welfare Center▶subjects)

■ **Annual implementation plan**

Remarks		Annual implementation plan (Unit : KRW 1 million)				
		2025	2026	2027	2028	2029
Hyo dispatch	Project Overview ( Number of cases)	1,600	1,600	1,600	1,600	1,600
	Budget	37	37	37	37	37

■ **Expected effect**

- Resolving the discomfort of the elderly in their daily lives and establishing a community service culture
- Discovery of senior citizens in crisis households and prevention of emergencies through identification of residential conditions and counseling for senior citizens

<b>3-2</b>	<b>Housing counseling support with Renovation of elderly-friendly housing</b>		
Remarks	Existing	Promote Department	Integrated Care Div.

Providing a stable residential environment by providing professional counseling related to housing and improving the residential environment of old houses in order to resolve residential complaints smoothly

### ■ Project Overview

- Support for consultation on housing issues and life management, etc. of the residential disadvantaged
- Supporting the renovation of the interior space of existing houses to be age-friendly
- Housing renovation support for the prevention of safety accidents in elderly residential houses

### ■ Project Content

- Project period : 2025 ~ Existing
- Project target
  - Housing Counseling : low-income residents of Dong-gu
  - Rent and repair maintenance support : Recipients of housing benefits with a standard median income of 47% or less
  - supply of public rental housing : Low-income homeless households living in Gwangju
- Project content
  - Consultation on Housing Assistance for the Social Underprivileged
  - leased households : Informa on rent support and rental housing application for vulnerable groups in housing
  - own households : Support for repair maintenance benefits (housing renovation)
- Propulsion Systems and Methods
  - Gwangju Dong-gu : Confirmation of qualification requirements for persons eligible for housing expenses support, repair maintenance, and rental housing occupancy
  - Korea Land and Housing Corporation : Provision of permanent, purchase, and lease rental housing and support for housing renovation and repair

■ **Annual implementation plan of Housing counseling support with Renovation**

Remarks		Annual implementation plan (Unit : KRW 1 million)				
		2025	2026	2027	2028	2029
Housing counseling	Project Overview (Number of counselors)	1,651	1,722	1,798	1,801	1,844
	Budget	—	—	—	—	—
Renovation of housing	Project Overview (Number of participants)	70	70	75	75	75
	Budget	700	700	703	703	703

■ **Expected effect**

- Solving civil complaints and acquiring information on residential welfare through professional counseling on residential welfare
- Improving the quality of life of residents, improving the convenience of life, and reducing housing costs

<b>3-3</b>	<b>Strengthen Emergency Safety Service Support</b>		
Remarks	Existing	Promote Department	Aged·Disabled Welfare Div.

Prepare a preventive care environment for the elderly and the disabled in the safety blind spot can be aware of the situation and respond to emergency situations such as 119 reports in the event of an emergency such as fire, disease, etc

### ■ Project Overview

- Checking the safety of the elderly and the disabled through emergency safety equipment
- Establishment of support system to respond quickly to emergencies

### ■ Project Content

- Project period: 2025 ~ Existing
- Project target
  - (Live alone elderly) The elderly aged 65 or older who actually live alone, regardless of their resident registration residence
  - (Disabled) Persons with disabilities who live alone or are vulnerable households
- Project Content
  - Installation of emergency safety service equipment that detects emergency callers and fire and activity in the home
  - Emergency management personnel in charge of the project frequently check the activity of the elderly and check safety when abnormal elderly are found
  - Emergency situation happens at home, support 119 calls and move out through an emergency call machine
- Propulsion Systems and Methods
  - Grant of Emergency Safety Service Support subsidies(district → Bitgoeul Welfare Center)
  - Applications and acceptance of applicants(subjects▶Dong) → Send an application form(Dong▶Welfare Center) → Target decision and service delivery(Welfare Center▶Subjects)

■ Annual implementation plan

Remarks		Annual implementation plan (Unit : KRW 1 million)				
		2025	2026	2027	2028	2029
Emergency Safety Service Support	Project Overview ( Number of subjects )	1,266	1,266	1,300	1,300	1,350
	Budget	229	229	240	240	280

■ Expected effect

- Prevention of safety accidents and loneliness of the elderly and the disabled living alone
- Building a Social Safety Net for the Vulnerable

<b>3-4</b>	<b>Operation of the Village Residential Repair Call Center</b>		
Remarks	NEW	Promote Department	Aged·Disabled Welfare Div.

For elderly residents living in old detached houses, one-stop residential repair services such as air conditioners, boilers, water, and electricity are provided through excellent businesses company

■ **Project Overview**

- Maintaining a neighboring city by providing residential repair services for old houses
- Best service is provided by selecting excellent businesses in residential repair villages

■ **Project Content**

- Project period: 2025 ~ Existing
- Project target: Residents aged 65 or older living in Dong-gu, who are uncomfortable to move, etc
- Project Content: Guided to residents in need of improvement and repair of residential environment in Dong-gu Office
  - Service Content: Selection of excellent businesses company specialized in residential repair of air conditioners, boilers, water, electricity, etc
  - Connecting villages with excellent businesses company to provide optimal safe and convenient services
- Propulsion Systems and Methods
  - Gwangju Dong-gu: Establishment of a general plan for the operation of the Village Residential Repair Call Center and operation of Performance institution of senior job program
  - Performance institution of senior job program : Recruitment and selection of participants

■ **Annual implementation plan**

Remarks		Annual implementation plan (Unit : KRW 1 million)				
		2025	2026	2027	2028	2029
Village Residential Repair Call Center	Project Overview (Number of calls)	500	500	500	500	500
	Budget	84	84	84	84	84

■ **Expected effect**

- Contribute to the formation of a warm neighborhood community by receiving safe and fast home repair services in my neighborhood

<b>4-1</b>	<b>Operate senior talent sharing 「100-Volunteer Corps」</b>		
Remarks	Existing	Promote Department	Aged·Disabled Welfare Div.

Improve sense of accomplishment and self-esteem in old age by running a talent donation volunteer group consisting of retired professional seniors

#### ■ Project Overview

- Responding to changes in the needs of volunteers by forming and operating specialized senior volunteers
- Improve self-esteem in elderly by operating a talent donation volunteer group for the elderly

#### ■ Project Content

- Project period: 2025 ~ Existing
- Project target: Talented elderly over 60 years of age who wish to volunteer
- Project Content
  - Operate 100-volunteer by selecting residents aged over 60 who wish to do volunteer work
  - Progress various talent donation volunteer activities such as home repairs and cultural performances, etc.
- Propulsion Systems and Methods
  - Gwangju Dong-gu : Supporting business budgets and monitoring
  - Dong-gu Senior Welfare Center : Recruitment, selection, and business operation of the 100-volunteers

■ **Annual implementation plan**

Remarks		Annual implementation plan (Unit : KRW 1 million)				
		2025	2026	2027	2028	2029
Operate 100-Volunteer Corps	Project Overview ( Number of Participants )	20	25	30	30	30
	Budget	5	5	5	5	5

■ **Expected effect**

- The elderly can have a positive attitude toward life in old age through participation in volunteer activities and relieve a sense of social isolation through social participation activities

<b>4-2</b>	<b>Revitalization of senior job programs 「100-workplace」</b>		
Remarks	Existing	Promote Department	Aged·Disabled Welfare Div.

Guarantee of old-age income by providing job expansion and opportunities for social participation to those who wish to participate in jobs for the elderly

■ **Project Overview**

- Guarantee of old-age income by providing jobs suitable for the abilities and aptitudes of the elderly
- Opportunities to participate in society are granted through employment counseling and mediation of senior citizens who wish to find a job

■ **Project Content**

- Project period: 2025 ~ Existing
- Project target: Senior citizens aged 65 or older(some over 60 years of age)living in Dong-gu who wish to participate in senio job
- Project Content: Provide various senior job like Public interest type, Social service type, Market type, Employment placement type, etc.
  - Public interest type: Senior care, support for vulnerable groups, maintenance of public facilities, etc
  - Social service type: Support for public administrative affairs, support for social welfare facilities, public interest promotion services for vulnerable groups, etc
  - Market type,: Manufacturing and selling food, small-scale store operations, parcel delivery, etc
  - Employment placement type: Employment counseling and corporate employment linkage
- Propulsion Systems and Methods
  - Gwangju Dong-gu: Establishment of a general plan for the operation of job programs for the elderly and management and operation of institutions implementing
  - Performance institution of senior job program : Recruitment and selection of participants and operation of projects

■ **Annual implementation plan**

Remarks		Annual implementation plan (Unit : KRW 1 million)				
		2025	2026	2027	2028	2029
Revitalization of senior job programs 「100-workplace」	Project Overview (Number of Participants)	3,800	3,800	3,800	3,800	3,800
	Budget	15,660	15,662	15,664	15,664	15,666

■ **Expected effect**

- Contribute to the improvement of the welfare of the elderly by providing various jobs for the elderly and supporting social activities

<b>4-3</b>	<b>Strengthen support system for reemployment of senior citizens Project</b>		
Remarks	Existing	Promote Department	Aged·Disabled Welfare Div.

Development of new projects suitable for the elderly, provision of professional jobs, and increase income support by strengthening the role of senior job support institutions

■ **Project Overview**

- Development of new projects suitable for the abilities and aptitudes of the elderly and systematic support for the implementation of projects
- Strengthen the role of senior job support institutions (Donggu Senior Club) by increasing Public interest type, Social service type senior job program

■ **Project Content**

- Project period: 2025 ~ Existing
- Project target: Dong-gu Senior Citizens' Job Support Agency(Dong-gu Senior Club)
- Project Content
  - Development and expansion of market-type senior job programs utilizing the social experiences and years of the elderly
  - Strengthen competency education of senior job support institutions
- Propulsion Systems and Methods
  - Gwangju Dong-gu: Budget support and guidance inspection, such as personnel expenses, etc
  - Senior Job Support Institution : Develop of Social service type, Market type senior job, and support for Performance Institution

■ **Annual implementation plan**

Remarks		Annual implementation plan (Unit : KRW 1 million)				
		2025	2026	2027	2028	2029
Strengthen support system for reemployment of senior citizens Project	Project Overview ( Number of Projects )	30	30	32	32	32
	Budget	5,300	5,300	5,400	5,400	5,400

■ **Expected effect**

- Strengthen the management role of the senior job support institution (Dong-gu Senior Club) and diversify jobs and improve the quality of life of the elderly by discovering and operating new job projects

<b>4-4</b>	<b>Hope Retirement Class Operation</b>		
Remarks	Existing	Promote Department	Aged/Disabled Welfare Div.

Support for 'retire education' so that retired residents can systematically manage themselves and have a happy retirement life

#### ■ Project Overview

- Prepare for retirement life as a second new life through professional and systematic education
- Resolving the anxiety and self-esteem of income, career, and relationship disconnection caused by retirement

#### ■ Project Content

- Project period: 2025 ~ Existing
- Project target: 50(Senior citizens aged 60 to 65 in Dong-gu who wish to participate)
- Project Content: Four Major Areas for a Strong Retirement Life(Life Design, Jobs, Health Care, Interpersonal Relationships) Education. Total 4 times, 1 time a week
- Propulsion Systems and Methods
  - Establishment of Plans to Support Retirement Life Design for Retired Persons : 2025. 3.
  - Labor-Management Development Foundation signed a business agreement with Gwangju branch of the Middle-aged Tomorrow Center : 2025. 4.
  - Promoting retirement education and recruiting participants : 2025. 4.
  - Retiree Education for 4 times(2hours per episode) : 2025. 5.
  - Link 65-year-old senior participants to 6.5 DAYS : 2025. 6.

■ Annual implementation plan

Remarks		Annual implementation plan (Unit : KRW 1 million)				
		2025	2026	2027	2028	2029
마을희망 은퇴교실 운영	Project Overview ( number of subjects)	50	50	50	50	50
	Budget	2	2	2	2	2

■ Expected effect

- Build confidence and lead a stable and satisfactory retirement life through preparation and planning for life after retirement
- Create a positive blueprint for life after retirement based on professional knowledge and gain psychological stability through social and emotional exchanges with peers of the same age

<b>5-1</b>	<b>Monitor Group on Age-friendlyCity Developemnet</b>		
Remarks	Existing	Promote Department	Aged-Disabled Welfare Div.

Expanding opportunities for senior citizens to participate in society and enhancing the efficiency of welfare programs for senior citizens by selecting and operating senior citizens with strong social trust and service spirit as Ager-friendly city Monitor Group

■ **Project Overview**

- Operate an Age-friendly city monitor group utilizing the potential workforce of the elderly with a lot of life experience
- Exploring and proposing the direction of development of Age-friendly policies through the operation of the monitor group of Age-friendly cities

■ **Project Content**

- Project period: 2025 ~ Existing
- Project target: 32(Persons 60 years of age or older who wish to monitor and participate in community service)
- Project Content
  - Regular monitoring of projects for the promotion of Age-friendly cities
  - Monitoring inconveniences of the elderly in daily life and discovering and suggesting policy improvements
- Propulsion Systems and Methods
  - Gwangju Dong-gu : Establishment of operation plan of Monitor Group on Age-friendlyCity Developemnet and recruitment and operation of participants
  - Monitor Group on Age-freindly City : Regular Monitoring on Age-friendly city project and Senior Welfare project

■ **Annual implementation plan**

Remarks		Annual implementation plan (Unit : KRW 1 million)				
		2025	2026	2027	2028	2029
Monitor Group on Age-friendly City Developemnet	Project Overview (Number of Participants )	25	25	25	25	25
	Budget	3	3	3	3	3

■ **Expected effect**

- Expanding opportunities to participate in the society of the elderly and establishing infrastructure for potential workers
- Promote efficient projects through regular monitoring of Age-friendly city projects

<b>5-2</b>	<b>Elderly Care Safe net “Walk around with 100-year friend”</b>		
Remarks	Existing	Promote Department	Aged·Disabled Welfare Div.

Establishment of a care system for the elderly in Dong-gu community to prevent blind spots of care due to the increase in the number of elderly people living alone

### ■ Project Overview

- Creating a sense of belonging by forming a network between the elderly
- Resolving social isolation and promoting emotional and physical well-being and health

### ■ Project Content

- Project period: 2025 ~ Existing
- Project target: 2,400(600 group, 4 people in 1 group)
- Project Content: Form a ‘100-freind’ group with elderly people living alone in neighbors
  - Form a ‘100-freind’ group with elderly people living alone in neighbors to check safety once or twice a week
  - participate in leisure programs with ‘100-friend’ group friend
  - Discovery of persons eligible through the Dong administrative welfare center, social welfare facilities, related institutions, etc
- Propulsion Systems and Methods
  - grant of 100-friend project subsidies(district → Bitgoeul Welfare Center, C.C.C. Dong-gu Senior Welfare Cneter)
  - Discovery and matching of subjects(performing institution) → Promotion of project(performing institution) → Report on project results(performing institution▶ district)

■ **Annual implementation plan**

Remarks		Annual implementation plan (Unit : KRW 1 million)				
		2025	2026	2027	2028	2029
Walk around with 100-year friend	Project Overview (number of subjects)	2,000	2,000	2,000	2,000	2,000
	Budget	20	20	20	20	20

■ **Expected effect**

- Preventing the occurrence of depression and loneliness among the elderly and establishing a care system for the elderly themselves
- Improvement of Self-esteem for the Elderly through Social Relationship Formation

<b>5-3</b>	<b>Operate Visiting Theater</b>		
Remarks	Existing	Promote Department	Aged·Disabled Welfare Div.

Provide senior citizens with opportunities to access various cultural contents so that they can satisfy their desire for cultural enjoyment and participate in the flow of popular culture

■ **Project Overview**

- Creating an environment where the elderly can watch and enjoy works in the village
- Improve the sensitivity of the elderly to the humanities by viewing various works

■ **Project Content**

- Project period: 2025 ~ Existing
- Project target: 1,000(Groups of 10 or more senior citizens aged 65 or older)
- Project Content
  - Free movies (Oh! Moon-hee and other 8) are screened at the senior's place
  - Provide to watch the play when apply more the 100 people group
- Propulsion Systems and Methods
  - Application for a Movie and a Play(Dong, Group ▶ District) → Review of the application organization(District) → screenings of movies and masterpieces(District ▶ Where applicant wants)

■ **Annual implementation plan**

Remarks		Annual implementation plan (Unit : KRW 1 million)				
		2025	2026	2027	2028	2029
Visiting Theater	Project Overview ( number of subjects )	1,000	1,000	1,000	1,000	1,000
	Budget	3	3	3	3	3

▣ **Expected effect**

- Revitalizing exchanges between the elderly and relieving stress in daily life through viewing cultural works
- Improve the cultural accessibility of the elderly who have difficulty visiting cultural facilities directly due to their old age

<b>5-4</b>	<b>Activation of 100-Club(Specialize project by age group)</b>		
Remarks	Existing	Promote Department	Aged:Disabled Welfare Div.

Contribute to the creation of a healthy leisure culture tailored to the elderly and the promotion of social participation by supporting clubs and hobbies and cultural programs reflecting gender needs and age

#### ■ Project Overview

- Elderly people with no hobbies participate in leisure activities to lead a vibrant retirement life
- Voluntary social participation of the elderly through the formation of hobby clubs

#### ■ Project Content

- Project period: 2025 ~ Existing
- Project target: 450(65 or more elderly)
- Project Content: 14 areas and 17 classes of hobby club operation and organization
  - Opening of a new club for the elderly (65-74 years old) (barista, listening to music, woodwork)
  - Opening a new club for men with less social participation than women (Health, Baduk)
  - Coordination operation of similar and overlapping areas among existing clubs in 2024(Art, Suyae, calligraphy, musical instrument (2), table tennis, knitting, yoga, golf (2), gymnastics (2))
- Propulsion Systems and Methods
  - Establishment of 100-year club operation plan in 2025: 2025. 1.
  - Promoting 100-year clubs and recruiting participants : 2025. 2.
  - Operation of 100-year clubs and holding year-end performance sharing sessions : 2025. 3. ~ 12.
- \* Adjust next year's program to reflect participant surveys and participation rates

■ **Annual implementation plan**

Remarks		Annual implementation plan (Unit : KRW 1 million)				
		2025	2026	2027	2028	2029
Activation of 100-Club	Project Overview ( number of subjects)	450	450	450	450	450
	Budget	80	80	80	80	80

■ **Expected effect**

- senior citizens find fun in life and promote communication among members with the same hobbies through leisure life,
- Good influence on the community by showing and sharing the skills learned by the elderly through their hobbies to their neighbors

<b>5-5</b>	<b>Generational empathy programs with 3 generation</b>		
Remarks	NEW	Promote Department	Women·Children Div.

Formation of positive family relationships through promoting emotional stability and mutual support of the 3generation family members

■ **Project Overview**

- Reestablish the importance and value of family members to change positive family perception
- Strengthen intergenerational ties and enhance family intimacy by implementing family integration programs

■ **Project Content**

- Project period: 2025~ Existing
- Project target: 3 generations of families with grandchildren under elementary school age living in Dong-gu
- Project Content: Operation of programs for generational empathy, such as recreation, parent-child education, family love mission activities, water play, and singing competitions to strengthen intergenerational ties of three generations of families
- Propulsion Systems and Methods
  - Dong-gu family center : Establishment and operation of project plan

■ **Annual implementation plan**

Remarks		Annual implementation plan (Unit : KRW 1 million)				
		2025	2026	2027	2028	2029
Operate Generational empathy programs with 3 generation	Project Overview (Number of Participants)	30	35	40	45	50
	Budget	8	8.5	9	9.5	10

■ **Expected effect**

- Promote respect and understanding between generations by operating

family programs involving three generations

- Promote harmony among participating families and boost vitality in life
- Building a Healthy and Harmonious Family System

<b>6-1</b>	<b>Live alone Elderly Suicide prevention project</b>		
Remarks	Existing	Promote Department	Aged/Disabled Welfare Div.

Prevention of solitude and suicide by providing customized case management for vulnerable elderly people at high risk of social isolation and depression

### ■ Project Overview

- Establish a sustainable mutual care system by supporting the formation of social relationships that can be trusted and relied on
- Linkage with community resources such as welfare centers, senior centers, public health centers, hospitals, suicide prevention centers, etc

### ■ Project Content

- Project period: 2025 ~ Existing
- Project target: 50(Senior citizens aged 65 or older with little contact with family members, neighbors, etc)
- Project Content
  - Selection of subjects based on initial consultation and scale tests, depression certificates, etc
  - Personalized visits and consultations
  - Resource linkage by service user
  - Promotion of group programs, self-help meetings, and outside experience activities
- Propulsion Systems and Methods
  - Granting of subsidies to institutions that carry out specialized projects for the elderly customized care services(district → Bitgoeul Welfare Center)
  - Application and Request for Service(subject, excavation institution ▶ performing institution) → Initial consultation and selection of subjects(performing institution) → Provide Service(performing institution ▶ subject)

▣ Annual implementation plan

Remarks		Annual implementation plan (Unit : KRW 1 million)				
		2025	2026	2027	2028	2029
Live alone Elderly Suicide prevention project	Project Overview ( number of subjects )	50	50	50	50	50
	Budget	21	21	21	21	21

▣ Expected effect

- Utilize local public and private networks to detect and prevent suicide victims early and prevent solitary death

<b>6-2</b>	<b>Accompany with Dementia! Free from worries about patients and their family</b>		
Remarks	Existing	Promote Department	Health Policy Div.

Creating a healthy happy dong-gu without worrying about dementia through the creation of a dementia-friendly environment, such as providing correct information on dementia, early screening of dementia,

■ **Project Overview**

- Establishment of a systematic dementia management system from early screening to registration and management of dementia patients
- Improvement of Dementia Awareness through education and campaign operation and establishment of a safety net

■ **Project Content**

- Project period: 2025~ Existing
- Project target: Dong-gu residence
- Project Content
  - Early dementia screening and examination, dementia precision examination expenses are supported for suspected dementia patients
  - Registration and management of dementia patients: Helping goods(Diapers, wipes, medicine calendar, etc) support, dementia treatment expenses support, etc.
  - Customized programs for each subject : (Normal Group) Dementia Prevention Program, (mild cognitive impairment) Cognitive Enhancement Class, (dementia patients and their families) Operation of shelter and healing programs
  - Operation of Dementia Relief Village(8 Village) : Establishment of a dementia safety net and campaign to improve dementia awareness through the formation of a dementia safety committee and operation of leading institutions to overcome dementia and safety franchisees

○ Propulsion Systems and Methods

- early examination of dementia: (First)Performing a memory test→(Second)Conducting a diagnostic test→(Third)request for a differential examination→ Follow-up management according to inspection results: (First)normal, (First to Second examination)mild cognitive impairment, (First to Third examination)Dementia
- Examination and program operation of visiting forms (senior center, city detached house, etc.) as well as dementia-friendly environment creation

■ Annual implementation plan

Remarks		Annual implementation plan (Unit : KRW 1 million)				
		2025	2026	2027	2028	2029
Accompany with Dementia! Free from worries about patients and their family	Project Overview (number of counseling )	6,100	6,150	6,200	6,250	6,250
	Budget	400	400	400	400	400

■ Expected effect

- Systematic management through early detection of dementia contributes to extending healthy life expectancy and improving quality of life of the elderly
- Realizing happiness without worries even if there is dementia through negative awareness of dementia

<b>6-3</b>	<b>Support Services for Daily Living (free meal, lunch box, mobile laundry)</b>		
Remarks	Existing	Promote Department	Aged·Disabled Welfare Div.

Service support for the elderly who have difficulty moving and are unable to solve daily maintenance problems such as meals and laundry on their own due to poor health

### ■ Project Overview

- Help the elderly with mobility difficulties to eat nutritious food
- Improve the residential environment so that the elderly can live in a pleasant living environment

### ■ Project Content

- Project period: 2025 ~ Existing
- Project target: vulnerable elderly over 65 years of age, 2,300
- Project Content
  - Free meals are provided 300 days a year through Loving restaurant : 470
  - Delivery of lunch boxes for elderly people with mobility difficulties : 130
  - Provide a comfortable residential environment by supporting the washing of blankets that are difficult to do on their own : 1,700
- Propulsion Systems and Methods
  - grant of Loving restaurant, lunch box delivering, mobile laundry subsidies : 2025. 1.
  - ※ Current status of the performing organization : Loving restaurant(Dong-gu Senior Welfare Center, Bitgoeul Welfare Center), Lunch box delivering(Bitgoeul Welfare Center), mobile laundry(C.C.C.Dong-gu Senior Welfare Center)
  - Applications and acceptance of applicants(Dong and welfare center)
  - Target selection and provide service

▣ Annual implementation plan

Remarks		Annual implementation plan (Unit : KRW 1 million)				
		2025	2026	2027	2028	2029
Support for Daily Living	Project Overview ( number of subjects )	2,300	2,300	2,300	2,300	2,300
	Budget	759	759	759	759	759

▣ Expected effect

- Lead a comfortable retirement life by solving problems in the daily lives of the elderly
- Provides a healthy and pleasant environment

<b>6-4</b>	<b>Oral health care for the elderly</b>		
Remarks	Existing	Promote Department	Health Services Div.

For the elderly who may be neglected in oral care, scaling, expert toothbrushing, and fluoride application are promoted to help oral care, and education on the importance and management methods of oral health is provided to improve self-help oral health care ability

■ **Project Overview**

- Visiting Jurisdiction Senior Center more than 40, a care facility for the elderly more than 10
- Target more than 700 elderly people who benefit from oral care projects

■ **Project Content**

- Project period : 2025~ Existing
- Project target : Jurisdiction(65 year or more) 700
- Project Content
  - Implementation of Fluoride Application Scaling Project for the Elderly : Oral examination, toothbrushing education, scaling, toothbrushing, fluoride application, etc
  - Visiting elderly living facilities and oral care : Visiting a care facility for the elderly, Senior Center, etc for Examination, expert brushing, denture washing, gum massage, fluoride application, etc

■ **Annual implementation plan**

Remarks		Annual implementation plan (Unit : KRW 1 million)				
		2025	2026	2027	2028	2029
Oral health care for the elderly	Project Overview (beneficiary)	700	700	700	700	700
	Budget	2	2	2	2	2

▣ **Expected effect**

- Improving the overall oral health of the elderly and practicing oral health life
- Preventing periodontal diseases and tooth deficits is expected to reduce medical expenses by increasing the effect

<b>6-5</b>	<b>Personalized health management Services using ICT</b>		
Remarks	Existing	Promote Department	Health Services Div.

Improve health behavior and self-health management ability by supporting non-face-to-face health care services using ICT technology for senior citizens aged 65 or older

### ■ Project Overview

- Improve the ability and quality of life of the elderly by providing sustainable health care services

### ■ Project Content

- Project period : 2025~ Existing
- Project target : 420 Senior citizens aged 65 or older in need of improvement in the management of frail and chronic diseases and health care behaviors
- Project Content : Providing non-face-to-face health care services using mobile apps and devices
  - Provide devices by subject (activity meter, scale, blood pressure meter, blood pressure meter)
  - Monitoring mobile app-based areas (health, nutrition, exercise) and non-face-to-face health counseling
  - Provision of customized health information, monthly missions and incentives for each health risk, etc
  - Providing health care such as physical, emotional, safety, and social activities using AI speakers for single-person households
- Propulsion Systems and Methods
  - Gwangju Dong-gu : Establishment of a general project operation plan, recruitment and selection of participants, and business operation

■ **Annual implementation plan**

Remarks		Annual implementation plan (Unit : KRW 1 million)				
		2025	2026	2027	2028	2029
Personalized health management Services using ICT	Project Overview (Participate rate)	95%	95%	95%	95%	95%
	Budget	132	132	132	132	132

■ **Expected effect**

- Contribute to strengthening self-health management capabilities by the elderly going beyond the beneficiaries of health services and practicing health care on their own

<b>7-1</b>	<b>Elderly life-long Publishing</b>		
Remarks	Existing	Promote Department	Humanities City Div.

Through writing education and autobiography publication for the elderly living in Dong-gu, the story of life is recorded to become humanities assets and a place for intergenerational communication is established

### ■ Project Overview

- Communicate with the current generation by recording and sharing the knowledge and experiences of the elderly
- Providing humanities assets to local communities by recording past cultures and living conditions

### ■ Project Content

- Project period : 2025 ~ Existing
- Project target : 60 or older elderly who live in Dong-gu
- Project Content
  - Management of writing education through mentoring for college students
    - ※ Business cooperation with local universities through business agreements to expand youth participation and empathize with generations in the region
  - Publication and Publication Commemorative Ceremony of Joint Autobiography
- Propulsion Systems and Methods
  - Gwangju Dong-gu : Total management of Elderly life-long Publishing
  - Chosun University Industry-Academic Cooperation Group(Department of Literature and Creation) : Operation of writing training and composition of autobiographical manuscripts
  - Chosun University Cartoon and Animation Department : Illustration Organization and Production

■ **Annual implementation plan**

Remarks		Annual implementation plan (Unit : KRW 1 million)				
		2025	2026	2027	2028	2029
Elderly life-long Publishing	Project Overview ( number of publishment )	3	3	3	3	3
	Budget	80	80	80	80	80

■ **Expected effect**

- Promote intergenerational communication by delivering the experiences and wisdom of the elderly to future generations
- To ensure diversity of local culture by recording the stories of the elderly who contain the history and culture of the community

<b>7-2 Operate Dong-gu type keepsake arrangement business</b>			
Remarks	NEW	Promote Department	Welfare Policy Div.

By supporting the storage arrangement service for possessions and post-mortem belongings, one-person households are prevented from social isolation, and resources are circulated by sharing low-needs items with neighbors

### ■ Project Overview

- When organizing possessions while alive, change is induced to look back on the past life and plan the future positively
- Improving the quality of life by improving the residential environment of low-income residents

### ■ Project Content

- Project period: 2025 ~ Existing
- Project target: local resident  
(However, post-mortem articles arrangement and special cleaning services are for low-income households with no connections)
- Project Content
  - Guide to the method of organizing possessions and support storage organization
  - Increase communication between neighbors and encourage resource circulation by donating recyclable materials
- Propulsion Systems and Methods
  - ▶ Share and Empty Service (Mentoring support for organizing property and storage arrangements while alive)
    - ① Individual, service application(Visit Dong) → ② Determining the Target (district) → ③ Share and Empty Activist visit home(Support Service)
  - ▶ Post-mortem articles arrangement and special cleaning service
    - ① Dong, Request of Service support⇒ ② Determining the Target (district) → ③ Organize keepsake and special cleaning(Private company)

④ Cost settlement(district)

■ Annual implementation plan

Remarks		Annual implementation plan (Unit : KRW 1 million)				
		2025	2026	2027	2028	2029
Dong-gu type keepsake arrangement business	Project Overview ( Number of service providing )	9	12	13	14	15
	Budget	12	14	14	15	15

■ Expected effect

- Share and Empty Activities Contribute to the Formation of a Self-Caring Network in the Region
- Creating an atmosphere to participate in environmental protection and resource circulation by sharing recyclable materials among neighbors

<b>7-3</b>	<b>Design happy life together! Senior University and 100-School Operation</b>		
Remarks	Existing	Promote Department	Aged·Disabled Welfare Div.

In order to systematically design old age, specialized lectures in six areas (humanities, health, economy, culture, relationships, and life) are provided to support independent and energetic old age life

### ■ Project Overview

- Provide opportunities for senior citizens to learn through professional lectures in each field so that they can realize a healthy and energetic retirement life

### ■ Project Content

- Operate 100-School
  - Project period: 2025 ~ Existing
  - Project target: a senior citizen in the jurisdiction (Participants in senior job, 100-friendly, a local senior interested in, etc)
  - Project Content: Specialized courses for the setting of the twilight period of the elderly in each field (6 session)
  - Propulsion Systems and Methods
    - Create a high-quality educational environment by inviting professional instructors in each field
    - Conduct a curriculum for each session and award a certificate of completion upon completion of all curriculums
    - Survey of satisfaction by lecture and reflection of improvement plan by utilizing the elderly-friendly monitor group
- Operate Senior University
  - Project period: 2025 ~ Existing
  - Project target: 9 classes for the elderly in the jurisdiction
  - Project Content: 건강하고 Experiential learning for healthy and happy old age, health and laughter special lecture operation
  - Propulsion Systems and Methods
    - Invited outpatient instructors to operate health care, second life lectures, and entertainment programs

■ Annual implementation plan

Remarks		Annual implementation plan (Unit : KRW 1 million)				
		2025	2026	2027	2028	2029
Operate 100-School	Project Overview ( Number of Participants )	1,200	1,200	1,200	1,200	1,200
	Budget	12	12	12	12	12
Operate Senior University	Project Overview (subsidiary business operator)	3	3	4	4	4
	Budget	14	14	16	16	16

■ Expected effect

- Systematic retirement design and promotion of social activities of the elderly
- Improvement of sense of accomplishment and self-esteem in old age among participating seniors

<b>7-4</b>	<b>「Communication center」 Operation</b>		
Remarks	Existing	Promote Department	Aged·Disabled Welfare Div.

Through the operation of the communication center, the center is created as a space for neighbors to contribute to a happy and lively retirement life

■ **Project Overview**

- Creating a space with neighbors and senior citizens through the operation of the 「Communication center」 with neighbors
- Contribute to the vibrant retirement life of senior citizens through the dissemination and linkage of various programs

■ **Project Content**

- With neighbors, 「Communication center」 Operation
  - Project period: 2025 ~ Existing
  - Project target: Communication center 18
  - (ChungJang Dong)Samsung, (Dong-myeong Dong)Dong-myeong, (Gye-lim1 Dong)Gyung-yang/Gye-lim (Gye-lim2 Dong)Ehwa bu-nyeo/Champan, (Sansu1Dong)Sansu, (Sansu2Dong)Jangwon bu-nyeo/Han ma-eul (Jisan1Dong)Jisan1bu-nyeo, (Jisan2Dong)Jae-il bu-nyeo, (SeoNam Dong)Mideung bu-nyeo, (Hak Dong)Hak1Humansia, (Hak-un Dong)SeongChon/One meo-li (JiWon1Dong)burdeul-yeo/Seyeon, (Jiwon2Dong)Yong San
  - Project Content: opening of senior citizen centers, the use of village shared spaces, and the Operation of cultural programs sympathy of generations, etc
- Support for the operation of senior centers
  - Project period: 2025~ Existing
  - Project target: 124
  - Project contnet
    - Operating expenses and cooling/heating expenses : 663million KRW (Country 130, City 177, district 356)
    - Facilities renovation, maintenance, and equipment : 426million KRW (City 38, district 388)
    - grain and free meals : 749million KRW (Country 25, City 13, district 711)

- Budget : 1,838million KRW per year (Country 155, City 228, district 1,455)
- Propulsion Systems and Methods
  - Gwangju Dong-gu : Establishment of a general plan for the promotion of senior centers and linkage of program distribution, etc
  - Dong-gu Senior Welfare Center : Establishment of a project plan for the promotion of senior centers and progress of programs

■ **Annual implementation plan**

Remarks		Annual implementation plan (Unit : KRW 1 million)				
		2025	2026	2027	2028	2029
Communication center Operation	Project Overview ( Number of users )	1,350	1,400	1,450	1,450	1,450
	Budget	81	81	81	81	81
Support for the operation of senior centers	Project Overview ( Number of support )	124	125	125	125	125
	Budget	1,838	1,853	1,860	1,870	1,880

■ **Expected effect**

- Contribute to the happy and lively retirement life of the elderly through the operation of the 「Communication Center」 with neighbors
- Contribute to the revitalization of senior centers by supporting the operation of senior centers and disseminating various programs

<b>7-5</b>	<b>Operate 「Experience Class for the Elderly with Disabilities」</b>		
Remarks	Existing	Promote Department	Aged·Disabled Welfare Div.

Implementation of a village community where residents understand and live together with the elderly and the disabled through experiences with the elderly and the disabled

■ **Project Overview**

- Understanding the differences in physical functions for the elderly and the disabled
- Form a community of families and communities together

■ **Project Content**

- Project period: 2025 ~ Existing
- Project target: Dong-gu residents who need to experience the elderly and disabilities(Elementary, middle, and high schools, community children's centers, social welfare facilities etc)
- Project Content: Theoretical education on the elderly and the disabled, experiential clothing and wheelchair experiential education
  - Social service project in Senior job program : Selection of person in charge of theoretical education and experiential education
  - theoretical education : Explain social psychology and physical characteristics and physical functions according to disability according to aging.
  - Experiential education : Share the experiences of using disability equipment such as clothes for the elderly and disabled and wheelchairs in daily life
- Propulsion Systems and Methods
  - Gwangju Dong-gu : Establishment of a general plan for the operation of Experience Class for the Elderly with Disabilities with management and operation of Performance institution of senior job program
  - Performance institution of senior job program : Recruitment and selection of participants and operation of experience classes for the elderly with disabilities

■ Annual implementation plan

Remarks		Annual implementation plan (Unit : KRW 1 million)				
		2025	2026	2027	2028	2029
Operate 「Experience Class for the Elderly with Disabilities」	Project Overview (Participants)	1,500	1,500	1,500	1,500	1,500
	Budget	84	84	84	84	84

■ Expected effect

- Contribute to improving awareness of the elderly and revitalizing the village community to families and communities

<b>8-1</b>	<b>Customized Senior Information Class</b>		
Remarks	Existing	Promote Department	Promotion Div.

Contribute to fostering the ability to use information and improving the ability to adapt to smart society by operating an informatization class for District residents at the level of District residents

■ **Project Overview**

- Cultivating basic knowledge to meet the information society and spreading the information mind
- Improvement of digital vulnerable residents' ability to utilize information services

■ **Project Content**

- Project period: 2025 ~ Existing
- Project target: Residence in Dong-gu
- Project Content
  - Regular operation of District residents' informatization education through the informatization education center
  - Education of elderly residents, such as senior citizen centers and self-sustaining organizations, through visiting information education
  - In addition to the existing smartphone and kiosk experience training, additional training using AI-based programs such as Chat GPT is operated
- Propulsion Systems and Methods
  - Gwangju Dong-gu : Establishment of a general plan for operation of informatization education and Performance Management Operations

■ **Annual implementation plan**

Remarks		Annual implementation plan (Unit : KRW 1 million)				
		2025	2026	2027	2028	2029
Customized Senior Information Class	Project Overview ( Participate rate(%) )	97	97	97	97	97
	Budget	70	70	70	70	70

■ **Expected effect**

- Contribute to narrowing the digital gap through informatization education for the elderly and the senior
- Increase the ability to use digital devices by expanding education that helps in real life

<b>8-2</b>	<b>Operation of visiting kiosk experience class</b>		
Remarks	Existing	Promote Department	Aged·Disabled Welfare Div.

As the use of kiosks in daily life becomes more common, a visiting experience class is operated to improve the ability of the elderly to adapt to society

### ■ Project Overview

- Resolving the inconvenience of the digital environment in the daily life of the elderly through visiting kiosk education
- Building confidence through real-life kiosk experience

### ■ Project Content

- Project period: 2025 ~ Existing
- Project target: Elderly living in Dong-gu
- Project Content
  - Linked operation to Social service project in Senior job program
  - Visit multi-use facilities(Senior center, city detached house, welfare facility, etc) and run the circuit
  - Practicing various types of real-life close-up operation such as movie theaters, cafes, and express buses
- Propulsion Systems and Methods
  - Gwangju Dong-gu : Discover place demanding for kiosk education and monitoring of business operation
  - Performance institution of senior job program : Job Training to Kiosk Experience promotion team and operate visiting kiosk experience class

■ **Annual implementation plan**

Remarks		Annual implementation plan (Unit : KRW 1 million)				
		2025	2026	2027	2028	2029
visiting kiosk experience class	Project Overview ( Number of participants )	1,000	1,000	1,000	1,000	1,000
	Budget	30	31	31	32	32

■ **Expected effect**

○ Resolving the digital information gap among the elderly through kiosk education tailored to the eye level of the elderly

<b>8-3</b>	<b>Information providing operations system</b>		
Remarks	Existing	Promote Department	Aged·Disabled Welfare Div.

Expand employment opportunities by providing job information for the elderly to more elderly through job information support services for the elderly

■ **Project Overview**

- Operation of a portal system for providing job information to meet the eye level of the elderly
- Provide various job information to guarantee the elderly's old-age income

■ **Project Content**

- Project period: 2025~ Existing
- Project target: 65 year or older Dong-gu Residents looking for jobs
- Project Content
  - Worknet-linked job opening information registration management
  - Counseling for senior citizens who wish to find a job, guidance and consulting for senior citizens
- Propulsion Systems and Methods
  - Gwangju : Total management of Senior Citizen Job Information Provision Portal System
  - Gwangju Dong-gu Performance institution of senior job program : Posting information on jobs for the elderly, consulting on job search, linking job agencies, etc

■ **Annual implementation plan**

Remarks		Annual implementation plan (Unit : KRW 1 million)				
		2025	2026	2027	2028	2029
Operate Information providing operations system	Project Overview ( Number of System operation )	1	1	1	1	1
	Budget	29	30	30	30	30

▣ **Expected effect**

- Live a vibrant and healthy retirement life by providing employment support through various job information

<b>8-4</b>	<b>Real life starts at 60 6.5DAY”</b>		
Remarks	Existing	Promote Department	Aged/Disabled Welfare Div.

Realizing practical welfare administration for the elderly that can be felt by residents by guiding welfare information for the elderly who have reached the legal age of 65

#### ■ Project Overview

- Providing information on welfare services provided by the State and local governments to senior citizens who have reached the age of 65
- Support the elderly to apply for and receive necessary services

#### ■ Project Content

- Project period: 2025 ~ Existing
- Project target: a 65-year-old resident of Donggu ※ 2024 1,618(Birth in 1959/65 year elderly)
- Project Content
  - Hold the "6.5DAY"(Inform welfare services for senior citizens, performances, etc) ceremony for 65-year-old seniors
  - Production of brochures for welfare services for senior citizens and distribution of attendees to commemorative ceremonies
  - ※ Distribution of brochures through the administrative welfare center of the address of those who did not attend the ceremony
- Propulsion Systems and Methods
  - Creating a brochures for welfare services for the elderly and establishing a plan to promote 6.5DAY ceremonies : 2025. 4.
  - Inspection and publication of welfare service brochures for senior citizens : 2025. 5.
  - Promote 6.5DAY and participant reception : 2025. 6.
  - 6.5DAY Ceremony promote and distribute on brochures : 2025. 6.

■ Annual implementation plan

Remarks		Annual implementation plan (Unit : KRW 1 million)				
		2025	2026	2027	2028	2029
6.5DAY	Project Overview ( Number of participants )	150	150	150	160	160
	Budget	18	18	18	20	20

■ Expected effect

- Improve residents' intimacy and trust in welfare administration by inviting 65-year-old residents who must have felt distant from administrative access directly from the District to celebrate and commemorate the entry of the elderly
- Realizing a leak-free and active administration for residents

<b>8-5</b>	<b>Operate Dong-gu 100-year promotion team</b>		
Remarks	NEW	Promote Department	Aged·Disabled Welfare Div.

Support a healthy and energetic life by delivering various news from the local community, such as society, culture, health, welfare, etc., necessary for the daily life of the elderly

■ **Project Overview**

- Provide the elderly with a variety of information necessary for their daily lives
- Support a healthy and energetic life with a variety of local information

■ **Project Content**

- Project period: 2025 ~ Existing
- Project target: All senior citizens aged 65 or older living in Dong-gu
- Project Content
  - Inform the 100-year promotion group through the operation of Kakao Channel and Operate SNS channels like Facebook, Instagram, blogs, etc.
  - Promote events and information for the elderly in Dong-gu in real time
- Propulsion Systems and Methods
  - Gwangju Dong-gu: Establishment of a general plan for the operation of Operate Dong-gu 100-year promotion team with management and operation of Performance institution of senior job program
  - Performance institution of senior job program : Recruitment and selection of participants

■ **Annual implementation plan**

Remarks		Annual implementation plan (Unit : KRW 1 million)				
		2025	2026	2027	2028	2029
Operate Dong-gu 100 year Promotion team	Project Overview (Number of Promotion)	400	400	400	400	400
	Budget	84	84	84	84	84

▣ **Expected effect**

- Contribute to living as a confident Dong-gu resident by being provided with various community information