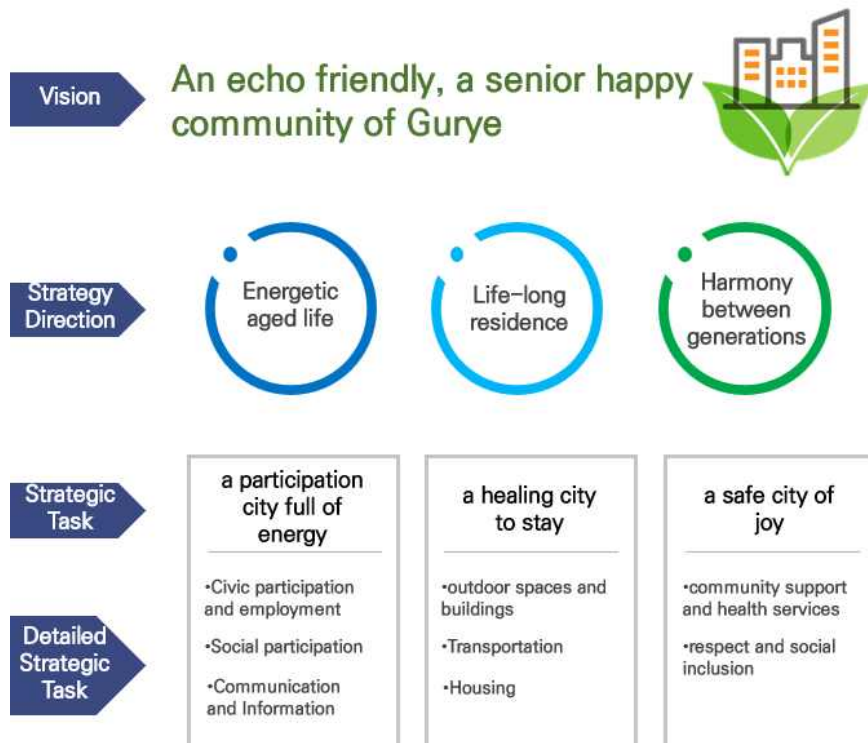


## 1<sup>st</sup> Age-friendly city of Gurye-gun Action Plan

- The vision of age friendly city of Gurye-gun is ‘An eco-friendly, a senior happy community of Gurye’. To achieve the vision, we set up three major goals.
  - Three strategic goals are ‘a participation city full of energy,’ ‘a healing city to stay,’ ‘a safe city of joy’, in accordance with 8 major areas proposed by the WHO.
    - A participation city full of energy ➔ Civic participation and employment, social participation , communication and information
    - A healing city to stay ➔ outdoor spaces and buildings, transport, housing
    - A safe city of joy ➔ community support and health services, respect and social inclusion

### Vision Map for building an Age-Friendly City of Gurye-gun



# Major projects of Age-friendly city of Gurye-gun

## 1) A participation city full of energy

〈Table 1〉 Project list

Goal	Area	Project Title
A participation city full of energy	Civic participation and employment	■ Restart continuing job education
		■ Farming equipment support
		■ Job Discovery and Job Support Projects for New Middle-aged persons with job experience
		■ Community job project
		■ Forest service helper
		■ City forest gardener project
		■ Senior center income-participation program support
		■ Senior College
	Social participation	■ Gurye Dongpyeon Sound Festival
		■ Senior club activities
		■ Lifelong education city project
		■ Invigoration of culture space at Happy community library
		■ Community invigoration
		■ Volunteer service invigoration
		■ Sports event for a healthy community
		■ Gurye Wellness Complex construction
		■ Construction of sports facilities for disadvantaged
		■ Improving management of senior wellness facilities
	Communication and information	■ Senior center management support
		■ Introduction of proposals for city development collection system
		■ Reinforce information capacity of Gurye-gun
■ Empathy-dialogue with the citizens		

## 2) A healing city to stay

〈Table 2〉 Project list

Goal	Area	Project Title
A healing city to stay	Outdoor spaces and buildings	■ Seosichun park night view construction
		■ Relocation of public offices to nearby places around the city hall
		■ Baekryeon culture road construction
		■ Gurye central road landscape renovation
		■ Street lamps installation and management
		■ Residential environment improvement of rural areas
		■ Green living environment construction
		■ Clean public toilets
	Transport	■ Reorganizing rural bus routes
		■ 100 won taxi service
		■ Special transportation for people with disabilities (ride-hailing, voucher taxis)
		■ Provide incentives for seniors to turn in their driver's licenses
		■ Senior zones
		■ Create and manage public parking lots
		■ Implementing a single fare for rural buses
	Housing	■ Happy home project
		■ Communal housing support
		■ Senior center happy home project
		■ Slate disposal support
		■ House renovation for disadvantaged
		■ My town welfare task force support

### 3) A safe city of joy

〈Table 3〉 Project list

Goal	Area	Project Title
A safe city of joy	Community support and health services	■ Healthy Life program
		■ Cardio-cerebrovascular disease prevention
		■ Visiting health care and improvement project
		■ Life-protector training
		■ Dementia center
		■ Medical expense subsidy for the elderly
		■ Health support program for seniors
		■ Gurye healing farm construction project
		■ Visiting integrated welfare service
		■ Visiting housekeeper/caregiver service support
		■ Personalized care service for seniors
	Respect and social inclusion	■ Town activist for elderly care
		■ Long-lived seniors support
		■ Month of senior respect event
		■ Health insurance subsidy for low-income seniors
		■ Free meal at senior centers
■ Side dish support project for the low-income		

## Setting performance indicators

- Performance indicators for the 1<sup>st</sup> Age-Friendly City of Gurye-gun Action Plan
  - The performance indicators will be calculated through multi-faceted evaluations
    - Multi-faceted evaluations by the residents, government officials, and experts
    - Accomplishment rates against project goals cannot tell whether municipal government’s policies agrees with the Age-friendly city of Gurye-gun Plan

〈Table 4〉 Multi-faceted evaluation system

	Quantitative Evaluation	Qualitative Evaluation
internal evaluation	① Unit project evaluation	② Enterprise-wide evaluation
external evaluation	–	③ Policy perception survey

- Each project is evaluated by the accomplishment compared against target performance
  - Progress of each project will be judged either as ‘achieved,’ ‘in-progress,’ ‘insufficient,’ or ‘adjustment.’

〈Table 5〉 Project Scorecard (Quantitative)

Classification	Details
Achieved (●)	The project achieved 100% or more of the target performance
Progress (◐)	The projects has not yet achcieved target performance
Insufficient (○)	The project has not started yet or is experiencing difficulties
Modification (▷)	Adjustment of target performance

### ■ Enterprise-wide assessment

- Internal evaluation on each project by the departments uses ‘Management by Object(MBO)’

- Evaluation of project objectives and annual objectives against the Annual Plan for the Age-Friendly City
- Evaluate the project by four categories, such as planning implementation, execution, and the participation and satisfaction of local residents

〈Table 6〉 Project Evaluation by Department Scoreboard

Evaluation	Performance Indicators		Score
Planning	Connectivity	· Whether it is related to the basic plan for a low birth rate and aging society	7
	Program Selection	· Unnecessary similarity or overlap with other businesses	6
	Administration and Finance Plan	· Enactment of project-related ordinances, budgeting, and etc.	7
Implementation	Input /Output	· Appropriate performance index calculation and budget input	10
	Procedure	· Appropriate implementation plan execution procedure (including implementation of changes)	10
	Monitoring	· Adequate monitoring of project implementation	10
Execution	Achievement of target performance	· Achievement of target performance (target level)	10
	Budget execution (% of the plan)	· Budget execution rate against plan	10
	Excellence in Performance	· Creation of Age-friendly environment and the necessity to continue	10
Participation and satisfaction of local residents	Private sector participation and cooperation	· Efforts to encourage resident participation and collect opinions of the residents / public-private cooperation	7
	Contributions	· Contribution to establishing age-friendly environment and building an cooperative atmosphere	7
	Local Residents satisfaction	· Satisfaction of residents, including the elderly, on projects	6
Total			100