

Chapter 8

Detailed project plan to create an age-friendly city in Suyeong-gu

Section 1

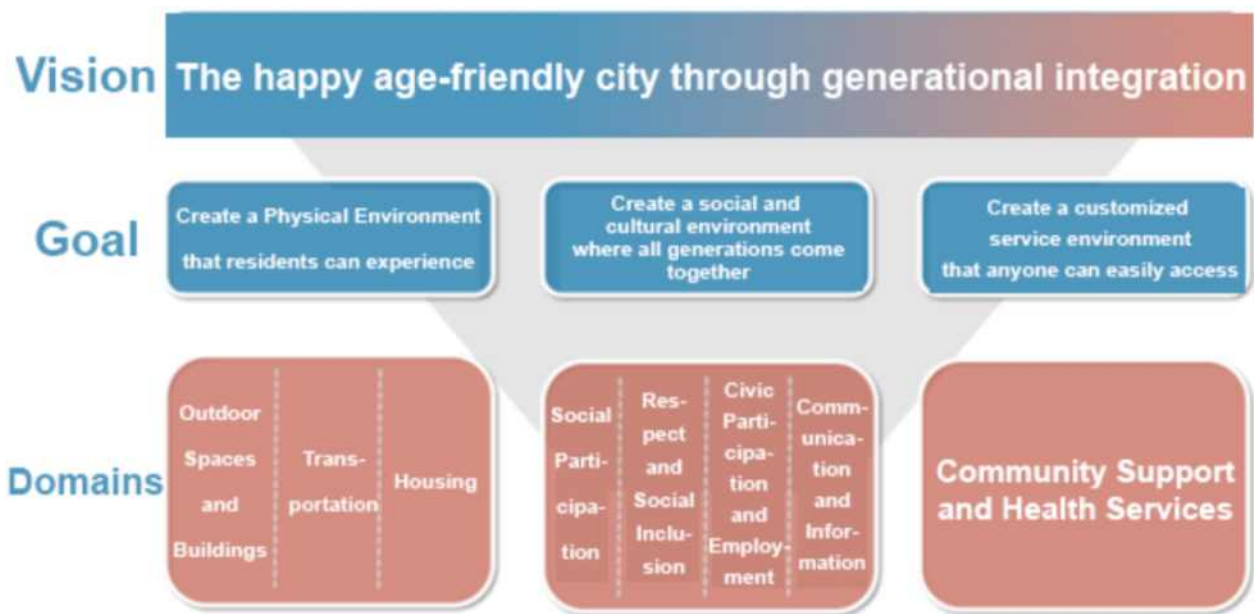
Age-friendly Vision and Goals
of
Suyeong-gu

Section 2

Detailed Project Plan to Create
an Age-Friendly City in
Suyeong-gu

Section 1 Age-friendly Vision and Goals of Suyeong-gu

The vision for building an age-friendly city in Suyeong-gu was set as ‘The happy age-friendly city through generational integration’. According to the vision, detailed goals are set to ‘Create a physical environment that residents can experience’, ‘Create a social and cultural environment where all generations come together’, and ‘Create a customized service environment that anyone can easily access’. The vision and goals of creating an age-friendly city in Suyeong-gu are shown in <Figure 8-1>



가.

<Figure 8-1> Vision and goals

ㄱ. Section 2 Detailed Project Plan to Create an Age-Friendly City in Suyeong-gu

1) 1. Outdoor Spaces and Buildings

- To create age-friendly Outdoor Spaces and Buildings, we carried out projects to create new green spaces and safe walking environments and maintain a clean environment for the local community
- The specific project plan for Outdoor Spaces and Buildings consists of 4 projects: the creation of a blue-green city blooming in the four seasons, Urban Galmaetgil project in Suyeong-gu for the implementation of a green city, safe urban Suyeong for cycling, and the management and operation of clean public toilets

Domain	No.	Project Name	Promotion Division	Category
Outdoor Spaces and Buildings	1-1	Blooming in All Seasons and Creating a Blue-green City	Suyeong District Office Job and Economy Division Green Area Part	Expansion
	1-2	Urban Galmaetgil Project in Suyeong-gu for the Implementation of a Green City	Suyeong District Office Administrative Support Division Life Sports Part	New
	1-3	Suyeong-gu, a Safe City to Ride a Bicycle	Suyeong District Office Transportation Division Transportation Part	Continue
	1-4	Clean Public Toilets are Managed and Operated	Suyeong District Office Resource Recirculation Division Environmental Purification Part	Continue

* Continue: Maintenance of existing project (no changes), Expansion: Expansion of existing project, New: New projects or projects proposed by researchers in Suyeong-gu as of 2023

Project Organization				Project Category
Responsible Division	Job and Economy Division	Responsible Part	Green Area Part	Expansion of Existing Project

Promotion Background and Necessity

- It is necessary to provide a well-maintained green space that is easily accessible to the elderly in Suyeong-gu
- There is not enough space for the elderly to relax in the community

Project Goals

- Creating a green space around the living area and providing a place to rest

Project Overview

- Project Period: January 2023 to December 2025
- Main Contents
 - Creation and management of trees, green areas, and flower cities in parks in Suyeong-gu
 - Flowers and flower sculptures are displayed at Gwangalli Minrak Beach Park Square, and photo zones with Gwangan Bridge in the background are set up all over

Annual Project Promotion Plan

Category	2023	2024	2025
Performance Index (Unit: %)	100	100	100
	•Index Definition: (Number of seasonal greening projects promoted/5) * 100		
Project cost (Unit: 1 million won)	506	506	506

Expected Effects

- It is expected that the creation and management of trees and green areas will increase the park usage rate of the elderly in Suyeong-gu and improve their quality of life by providing safe shelter
- It is expected to provide an opportunity for the elderly and residents of Suyeong-gu to recover their lost daily lives, and to contribute to maximizing the effects of tourism and revitalizing the local economy through beautiful attractions

Urban Galmaetgil Project in Suyeong-gu for the Implementation of a Green City

Project Organization				Project Category
Responsible Division	Administration Support Division	Responsible Part	Life Sports part	New Project

Promotion Background and Necessity

- Create a unique urban Galmaetgil with a theme by promoting the Suyeong-gu downtown riverside project to create a smart green city in a 15-minute living area

Project Goals

- Create a unique, people-centered walking city by creating an urban Galmaetgil

Project Overview

- Project Period: January 2023 to December 2015
- Project Area
 - Afternoon Food Trail: Daenam Intersection ~ Ppancheon-dong ~ Gwangalli Beach ~ Nulguji Park
 - Suyeong history and culture story path: Mangmi-dong ~ F1963 ~ Suyeong-dong Area
- Project Content
 - Afternoon Food Trail
 - Maintenance of Nulguji Park and a traffic island in front of KBS
 - Installation of various amenities such as a sculpture and photo zone applying the concept of '3 p.m.' at Gwangalli Beach
 - Maintenance of old walls and bike paths along the Galmaetgil by Suyeong River
 - Suyeong history and culture story path
 - Establishment of a digital system (kiosk) integrating Suyeong history and tourism
 - Installation of landscape lighting tailored to the characteristics of pedestrian paths such as Suyeong Historical Park

Annual Project Promotion Plan

Category	2023	2024	2025
Performance Index (Unit: %)	100	Ongoing management	Ongoing management
	•Index Definition: Promotion rate of urban Galmaetgil construction projects		
Project Cost (Unit: 1 million won)	3,469	-	-

Expected Effects

- Contributing to the creation of a unique, people-centered walking city and the revitalization of walking culture by creating an urban Galmaetgil linking taste, history, culture, and tourism resources
- It is expected that opportunities for intergenerational exchange will expand due to the installation of various amenities

Project Organization				Project Category
Responsible Division	Traffic Administration Division	Responsible Part	Transportation Part	Existing Project

Promotion Background and Necessity

- Since the elderly use bicycles as a means of transportation or exercise, considering the growth rate of the elderly population, creating an environment where not only the elderly but also various generations can ride bicycles safely

Project Goals

- Improve the physical and mental health of the elderly by improving bicycle paths

Project Overview

- Project Period: January 2023 to December 2025
- Main Contents
 - Bicycle road environment improvement project
 - Road surface and sign maintenance project

Annual Project Promotion Plan

Category	2023	2024	2025
Performance Index (Unit: Location)	10	10	10
	•Index Definition: Road surface maintenance, road markings, and sign maintenance results (Locations)		
Project Cost (Unit: 1 million won)	25	25	25

Expected Effects

- It is expected to contribute to maintaining the health and improving life satisfaction of the elderly
- Enjoying the surrounding scenery and contemplation is expected to help mental health

Project Organization				Project Category
Responsible Division	Resource Recirculation Division	Responsible Part	Environmental Purification Part	Existing Project

Promotion Background and Necessity

- It is necessary to create clean public toilets to promote the convenience and welfare of users
- Increased need to strengthen safety facilities due to increased crime in public toilets

Project Goals

- Promoting convenience for public toilet users and creating a clean and clean environment

Project Overview

- Project Period: January 2023 to December 2025 (Extended period)
- Main Contents
 - Maintenance of clean public toilets by assigning efficient cleaning workers on a seasonal basis
 - Repair and condition inspection of damaged and old public toilets
 - Safety inspection of electrical facilities in public toilets (Once a year)
 - Inspection of whether illegal cameras have been installed [Regularly (Once a month), as often]
 - Joint inspection of crime prevention facilities such as safety emergency bells (Once a year)
 - Apply pink guard to the top of the toilet compartment
 - Installation and operation of temporary mobile toilets at Gwangalli Beach during the holiday season

Annual Project Promotion Plan

Category	2023	2024	2025
Performance Index (Unit: Time)	12	12	12
	•Index Definition: Number of regular public toilet safety and facility inspections		
Project Cost (Unit: 1 million won)	724	724	724

Expected Effects

- Improve user satisfaction by creating safe and clean public toilets from crime

2) 2. Transportation

- To create an age-friendly traffic environment, we are implementing support projects for the elderly to move safely in the local community by providing services and safety education for people with reduced mobility and expanding walking environments and safety facilities
- The specific project plan for Transportation consists of 4 projects: free shuttle bus service for the elderly, traffic safety education tailored to the elderly's eye level, clean bus stops, and customized infrastructure construction for people with limited mobility

Domain	No.	Project Name	Promotion Division	Category
Transportation	2-1	Free Shuttle Bus Service for the Elderly	Suyeong District Office Family Happiness Division Welfare for the Elderly Part	Continue
	2-2	Traffic Safety Education Tailored to the Elderly	Suyeong District Office Transportation Division Transportation Part	Expansion
	2-3	Clean Bus Stop	Suyeong District Office Family Happiness Division Welfare for the Elderly Part	Expansion
	2-4	Building Customized Infrastructure for the Transportation Vulnerable	Suyeong District Office Transportation Division Transportation Part	Continue

* Continue: Maintenance of existing project (no changes), Expansion: Expansion of existing project, New: New projects or projects proposed by researchers in Suyeong-gu as of 2023

Project Organization				Project Category
Responsible Division	Family Happiness Division	Responsible Part	Welfare for the Elderly Part	Existing Project

Promotion Background and Necessity

- It is necessary to provide means of transportation for the elderly in vulnerable transportation groups because it is difficult to use community welfare services
- Transportation convenience support and traffic accident prevention for traffic-vulnerable elderly people using welfare centers

Project Goals

- Improved mobility convenience for the elderly and free shuttle service for the elderly using high-altitude welfare facilities

Project Overview

- Project Period: January 2023 to December 2025
- Main Contents
 - Establish optimal routes in frequently used areas such as welfare facilities to operate shuttle buses for the elderly and other people with limited mobility
 - Providing free or affordable shuttle buses for the elderly who use facilities located in high ground
 - Providing convenience of use by strengthening the promotion of information on routes, vehicle operations, etc.
- Public-Private Partnerships: Welfare center for the elderly in Suyeong-gu

Annual Project Promotion Plan

Category	2023	2024	2025
Performance Index (Unit: Time)	480	500	600
	•Index Definition: Number of free shuttle services per year		
Project Cost (Unit: 1 million won)	23	24	25

Expected Effects

- By providing free shuttle bus vehicles to welfare center users, mobility convenience for the elderly is increased, facility utilization is improved through improved

accessibility to welfare facilities, and service provision is expanded

- Expanding opportunities for elderly people with limited mobility to participate in society through the provision of a free shuttle bus service

2-2 Traffic Safety Education Tailored to the Elderly

Project Organization				Project Category
Responsible Division	Transportation Division	Responsible Part	Transportation Part	Expansion of existing project

Promotion Background and Necessity

- Conduct education to raise awareness about traffic orders that they know but don't follow, and prevent traffic accidents for the elderly, which can lead to major accidents if careless due to poor physical function and cognitive function

Project Goals

- Prevent traffic accidents for the elderly leading to major accidents due to decreased physical and cognitive function

Project Overview

- Project Period: January 2023 to December 2025 (Extended period)
- Main Contents
 - Target: Elderly people aged 65 and over in the jurisdiction
 - Visits to each institution desired for education, training using videos (5 sessions in total)
 - Education focusing on unauthorized crossing accidents with a high rate of traffic fatalities among the elderly
 - Instructor: The Road Traffic Authority Busan Branch, Nambu Police Station

Annual Project Promotion Plan

Category	2023	2024	2025
Performance Index (Unit: Person)	50	60	70
	•Index Definition: Number of participants in traffic safety education per year		
Project Cost (Unit: 1 million won)	750	750	750

Expected Effects

- Prevention of traffic accidents through customized education tailored to the eyes of the elderly, such as jaywalking accidents with a high rate of traffic deaths

Project Organization				Project Category
Responsible Division	Family Happiness Division	Responsible Part	Welfare for the Elderly Part	Expansion of existing project

Promotion Background and Necessity

- According to the Busan City Bus Information Management System, all bus stops in Busan have a total of 13,833 buses, but there are few manpower to manage them, and facility inspections are not carried out in a timely manner. Complaints have been filed for infringing on nearby public facilities and residential environments with illegal leaflets and garbage in bus stops

Project Goals

- Creating a clean environment through inspection of bus stop facilities and environmental beautification activities

Project Overview

- Project Period: January 2023 to December 2025 (extended period)
- Main Contents
 - Inspection of bus stop facilities installed in each administrative district and implementation of environmental beautification activities in bus stops
- Public-Private Partnerships: Busan Suyeong Senior Club

Annual Project Promotion Plan

Category	2023	2024	2025
Performance Index (Unit: Person)	100	120	150
	•Index Definition: Number of job participants in the Clean Bus Stop Project		
Project Cost (Unit: 1 million won)	315	378	472

Expected Effects

- Resolve complaints through inspection of bus stop facilities and environmental beautification activities
- Satisfying the needs of the elderly for social activities and raising positive perceptions about jobs for the elderly

Project Organization				Project Category
Responsible Division	Transportation Division	Responsible Part	Transportation Part	Existing Project

Promotion Background and Necessity

- There were a total of 557 traffic accidents for the elderly in Suyeong-gu in the past 5 years, but the total number of elderly traffic accidents that occurred within the double elderly protection area was 7, and only about 1.3% of all traffic accidents for the elderly occurred within the elderly protection area
- Since elderly drivers have a longer cognitive response time than other age groups, it is difficult to cope when an unexpected situation occurs, and safe driving is difficult, so it is necessary to expand the installation of road and traffic safety facilities that take into account the characteristics of these elderly people

Project Goals

- Improving the walking environment and expanding safety facilities specialized for the elderly

Project Overview

- Project Period: January 2023 to December 2025
- Main Contents
 - Continued protected area improvement projects, such as identifying the degree of aging of road and traffic safety facilities pre-installed in protected areas and improving facilities
 - Installation (replacement) of illuminated signs to improve visibility for elderly drivers
 - Promoting improvements such as improving the viewing angle for elderly drivers, installing left-hand lanes, and increasing response time for early recognition of front signals
- (※As of 2022.11.30, Suyeong-gu Senior Welfare Center and 4 other locations in the designated area for the elderly)

Annual Project Promotion Plan

Category	2023	2024	2025
Performance Index (Unit: Case)	1	1	2
	•Index Definition: Number of maintenance areas for the elderly		
Project Cost (Unit: 1 million won)	50	50	50

Expected Effects

- It is expected that people with limited mobility, such as people with disabilities, the elderly, pregnant women, those with infants, and children in Suyeong-gu can move safely and conveniently and prevent safety accidents

3) 3. Housing

- To create age-friendly housing facilities, build living infrastructure, provide new housing facilities, and carry out facility improvement projects for vulnerable housing groups
- The specific project plan for residential facilities consists of 7 projects: the operation of a residential environment improvement project for the Dock Corps, the installation of basic firefighting facilities for housing and disaster-vulnerable groups, the improvement and replacement of high-definition CCTV for aging prevention purposes, the replacement of LED street lights and security lights for bright and safe nighttime walking, the operation of a shared housing for the elderly, the operation of a village keeper's office, and the enrollment of a life safety insurance for residents of Suyeong-gu

Domain	No.	Project Name	Promotion Division	Category
Housing	3-1	Residential Environment Improvement Project of Suyeong-gu Tuktaki Volunteer Group	Suyeong District Office Welfare Policy Division Hope Welfare Support Part	Continue
	3-2	Establishment of Basic Fire-fighting Facilities for the Class Vulnerable to Housing and Disasters	Suyeong District Office Safety Management Division Social Disaster Response part	Continue
	3-3	Improved and Replaced Old Security CCTV in High Definition	Suyeong District Office Safety Management Division Smart Control Part	Continue
	3-4	Replacing LED Street Lights and Security Lights for Bright and Safe Nighttime Walking	Suyeong District Office Safety Management Division Electric Mechanism Part	Continue
	3-5	Operation of Shared Housing Facilities for the Elderly	Suyeong District Office Family happiness Division Welfare for the Elderly Part	Continue
	3-6	Operation of a Village Keeper's Office	Suyeong District Office Smart City Division Urban Renewal Planning Part	Continue
	3-7	Living Safety Insurance for Residents of Suyeong-gu	Suyeong District Office Safety Management Division Social Disaster Response Part	Expansion

* Continue: Maintenance of existing project (no changes), Expansion: Expansion of existing project, New: New projects or projects proposed by researchers in Suyeong-gu as of 2023

Residential Environment Improvement Project of Suyeong-gu Tuktaki Volunteer Group

Project Organization				Project Category
Responsible Division	Welfare Policy Division	Responsible Part	Hope Welfare Support Part	Existing Project

Promotion Background and Necessity

- There are vulnerable housing groups living in inappropriate living environments due to economic difficulties within the community
- According to the ‘Suyeong-gu Low-Income Residents Life Stability Support Ordinance’, it is necessary to create an appropriate living environment for low-income elderly people to live in the community at a low cost

Project Goals

- Contributing to the creation of Suyeong where everyone lives well together by providing a comfortable living environment for vulnerable groups living in poor environments because they cannot afford it

Project Overview

- Project Period: January 2023 to December 2025
- Main Contents
 - Improving the living environment for vulnerable housing groups sensitive to climate change such as heat waves, cold waves, and typhoons
 - House repair projects to improve the living environment for vulnerable groups
- Public-Private Partnerships: Suyeong-gu Tuktaki Volunteer Group (Housing Environment Improvement Talent Volunteer Corps composed of 20 members from Saemaeul in each dong)

Annual Project Promotion Plan

Category	2023	2024	2025
Performance Index (Unit: Case)	20	20	20
	•Index Definition: Number of households participating in residential environment improvement projects		
Project Cost (Unit: 1 million won)	25	25	25

Expected Effects

- Contributing to the creation of Suyeong where everyone lives well together by providing a comfortable living environment for vulnerable groups living in poor environments because they cannot afford it

Establishment of Basic Fire-fighting Facilities for the Class Vulnerable to Housing and Disasters

Project Organization				Project Category
Responsible Division	Safety Management Division	Responsible Part	Social Disaster Response Part	Existing Project

Promotion Background and Necessity

- There is a risk of safety accidents in residential areas due to lack of basic firefighting facilities
- Life safety improvement projects are needed for socially vulnerable generations

Project Goals

- Prepare for safety incidents by supporting the installation of basic firefighting facilities for housing and disaster-vulnerable groups

Project Overview

- Project Period: January 2023 to December 2025
- Main Contents
 - Support for 1 gas timer and 1 spray-type fire extinguisher per household
- Public-Private Partnerships: General and welfare centers for the elderly in Suyeong-gu

Annual Project Promotion Plan

Category	2023	2024	2025
Performance Index (Unit: Case)	200	200	200
	•Index Definition: Number of households supported		
Project Cost (Unit: 1 million won)	20	20	20

Expected Effects

- Install basic fire-fighting facilities for those vulnerable to housing and disasters to prepare for gas safety accidents and prevent damage to life and property in advance

Improved or Replaced Old Security CCTV in High Definition

Project Organization				Project Category
Responsible Division	Safety Management Division	Responsible Part	Smart Control Part	Existing Project

Promotion Background and Necessity

- CCTV in the community installed for crime prevention and disaster preparedness is not functioning properly due to obsolescence or defects
- It is necessary to improve the living environment for the elderly to continue living in the community

Project Goals

- Creating a safe living environment from crime and disasters by replacing old and poor CCTV for security purposes

Project Overview

- Project Period: January 2023 to December 2025
- Main Contents
 - Replacing an old or defective CCTV camera after 7 years of use

Annual Project Promotion Plan

Category	2023	2024	2025
Performance Index (Unit: Case)	10	10	10
	•Index Definition: Number of replacements		
Project Cost (Unit: 1 million won)	30	30	30

Expected Effects

- Create safe urban Suyeong from crime and disasters by improving performance by replacing CCTV cameras for aging prevention purposes in the jurisdiction

Replacing LED Street Lights and Security Lights for Bright and Safe Nighttime Walking

Project Organization				Project Category
Responsible Division	Safety Management Division	Responsible Part	Electric Mechanism Part	Existing Project

Promotion Background and Necessity

- It is necessary to create a safe nighttime walking environment by replacing street lights and security lights in the community
- The elderly need to improve the living environment to continue living in the community

Project Goals

- Create a safe living environment by replacing LED street lights and security lights in the jurisdiction

Project Overview

- Project Period: January 2023 to December 2024
- Main Contents
 - Replace the street lights and security lights in the jurisdiction with LED lights, which are eco-friendly products (100%)

Annual Project Promotion Plan

Category	2023	2024	2025
Performance Index (Unit: Case)	580	579	-
	•Index Definition: Number of replacements		
Project Cost (Unit: 1 million won)	280	280	-

Expected Effects

- 100% replacement of LED lights, which are eco-friendly products, to secure safe and pleasant night streets and create an eco-Suyoeng and a safe living environment

Project Organization				Project Category
Responsible Division	Family Happiness Division	Responsible Part	Welfare for the Elderly Part	Existing Project

Promotion Background and Necessity

- There is a need to provide shared housing facilities for elderly people living alone because housing facilities where they can earn a stable livelihood after old age are not well equipped

Project Goals

- Providing shared housing facilities to stabilize housing for low-income elderly people living alone

Project Overview

- Project Period: January 2023 to December 2025
- Main Contents
 - Contributing to the promotion of welfare for the elderly by operating housing and welfare facilities specialized for the elderly where the elderly can live together by providing safe housing conditions for the elderly and convenience necessary for daily activities such as meals

Annual Project Promotion Plan

Category	2023	2024	2025
Performance Index (Unit: %)	Increase	Increase	Increase
	•Index Definition: Annual growth rate of the number of users of shared housing facilities (Number of residents in previous year/ Number of residents this year) * 100		
Project Cost (Unit: 1 million won)	Non-budget	Non-budget	Non-budget

Expected Effects

- The operation of shared housing facilities for the elderly is expected to help them lead a stable old life and prevent loneliness

3-6

Operation of a village keeper's office

Project Organization				Project Category
Responsible Division	Smart City Division	Responsible Part	Urban Renewal Planning Part	Existing Project

Promotion Background and Necessity

- Operation is necessary to improve the environment for the elderly in housing welfare blind spots

Project Goals

- Actively eliminate housing welfare blind spots through projects to improve the living environment through the provision of maintenance services for old houses

Project Overview

- Project Period: January 2023 to December 2025
- Main Contents
 - Promotion of residential environment safety projects
 - Home maintenance
 - Tool rental services, unmanned delivery services, residents' convenience support services, etc.

Annual Project Promotion Plan

Category	2023	2024	2025
Performance Index (Unit: Case)	14,000	14,500	15,000
	*Index Definition: Number of annual records such as house repairs, tool rentals, unmanned delivery, and community services		
Project Cost (Unit: 1 million won)	308	309	310

Expected Effects

- Expectations for improving residents' satisfaction and improving the environment of residents in housing welfare blind spots by operating essential services for residents, such as small-scale home repair services, unmanned delivery lockers, and tool rental, etc.

Project Organization				Project Category
Responsible Division	Safety Management Division	Responsible Part	Social Disaster Response Part	Expansion of existing project

Promotion Background and Necessity

- Article 4 of the Basic Act on Disaster and Safety Management
- Contributing to the stability of the lives of residents who have suffered physical and human damage from various disasters and accidents

Project Goals

- Stabilization of the lives of residents who have suffered damage to the human body and life due to various disasters and accidents occurring in their daily lives, such as natural disasters and fires

Project Overview

- Project Period: January 2023 to December 2025
- Main Contents
 - Target: All residents registered as residents of Suyeong-gu (Including residents and registered foreigners)
 - Contents: Coverage of various disasters and accidents that occur in everyday life, such as natural disasters and fires;
 - Apply for life safety insurance for Suyeong-gu residents from the Korea Local Finance Association;
 - Application for a claim within three years from the date of the accident in the event of a disaster or accident during the insurance coverage period.
 - Application Procedure: Accident → The insured or legal heir requests the mutual aid association with the relevant evidentiary documents.

Annual Project Promotion Plan

Category	2023	2024	2025
Performance Index (Unit: Case)	14	14	15
	<ul style="list-style-type: none"> •Index Definition: Number of coverage items - Promotion of continuous expansion of 1 guarantee item on a 2-year cycle 		
Project Cost (Unit: 1 million won)	59.4	59.4	59.4

Expected Effects

- Creation and continuation of a safe living environment by contributing to the stability of the lives of residents of the ward who have suffered physical and human damage from various disasters and accidents

4) 4. Social Participation

- Development of community events and programs that can be easily accessed by the elderly, inclusion of elderly people who are underserved by cultural and leisure facilities, and carried out intergenerational integration projects involving various age groups to participate in age-friendly society
- The specific project plan for social participation consists of 9 projects: a program to promote emotional and physical activity with sunshine, the operation of the Jangsu Sports University, the operation of the Eco Suyeong Environment Protection Silver Volunteer Corps, the operation of the Silver Library and Suyeongsung Theater, Operation of senior classrooms at senior colleges, Establishment of a Mangmi Inhabitants Sports Center, the operation of a silver fitness center for the elderly, the operation of a local volunteer instructor, and the revitalization of the operation of leisure and welfare facilities for the elderly

Domain	No.	Project Name	Promotion Division	Category
Social Participation	4-1	A Program to Promote Emotional and Physical Activity with Sunshine	Suyeong District Office Administration Support Division Life Sports Part	New
	4-2	Operation of Jangsu Sport College	Suyeong District Office Administration Support Division Life Sports Part	Continue
	4-3	Eco Suyeong Environment Protection Silver Volunteer Corps	Suyeong District Office Family Happiness Division Welfare for the Elderly Part	Continue
	4-4	Operation of Silver Library and Suyeongsung Theater	Suyeong District Office Smart City Division Urban Renewal Planning Part	New
	4-5	Silver Fitness Operation	Suyeong District Office Smart City Division Urban Renewal Planning Part	New
	4-6	Operation of Senior Class at Senior College	Suyeong District Office Family Happiness Division Welfare for the Elderly Part	Continue
	4-7	Establishment of a Mangmi National Sports Center	Suyeong District Office Administration Support Division Life Sports Part	New
	4-8	Operation of a Local Volunteer Instructor	Suyeong District Office Family Happiness Division Welfare for the Elderly Part	Continue
	4-9	Revitalization of the Operation of Leisure	Suyeong District Office Family Happiness Division	Continue

		and Welfare Facilities for the Elderly	Welfare for the Elderly Part	
--	--	---	------------------------------	--

* Continue: Maintenance of existing project (no changes), Expansion: Expansion of existing project, New: New projects or projects proposed by researchers in Suyeong-gu as of 2023

A Program to Promote Emotional and Physical Activity with Sunshine

Project Organization				Project Category
Responsible Division	Administration Support Division	Responsible Part	Life Sports Part	Research Team Proposal Project

Promotion Background and Necessity

- The social participation activities of the elderly are generally low, and most events are held late at night, making it difficult for the elderly to participate
- It is necessary to maintain the health of the elderly and expand social networks within the community through emotional and physical activity promotion programs

Project Goals

- Improving the social participation rate of the elderly through programs to promote emotional and physical activity

Project Overview

- Project Period: January 2023 to December 2025
- Main Contents
 - A program to promote emotional and physical activity using the morning hours when the elderly take a walk
 - It consists of programs suitable for the morning hours, such as meditation and energy physical exercises
- Public-Private Partnerships: Suyeong-gu Sports Council

Annual Project Promotion Plan

Category	2023	2024	2025
Performance Index (Unit: Person)	20	20	20
	•Index Definition: Number of participants in emotional and physical activity promotion programs per year		
Project Cost (Unit: 1 million won)	Non-budget	Non-budget	Non-budget

Expected Effects

- Providing programs for the elderly during their walking time can help improve social participation rates
- An emotional and physical activity promotion program is expected to improve physical and cognitive function and reduce depression and anxiety

Project Organization				Project Category
Responsible Division	Administration Support Division	Responsible Part	Life Sports Part	Existing Project

Promotion Background and Necessity

- Implementing an exercise program for the health of the elderly, who are rapidly increasing in the aging era
- There is a need to reduce medical expenses and social costs associated with aging by maintaining physical and daily life functions through regular physical activity

Project Goals

- Promoting health by providing physical education programs to the elderly living in the jurisdiction

Project Overview

- Project Period: January 2023 to December 2025
- Main Contents
 - Running aqua aerobics, table tennis, and line dance programs
 - Configured physical education programs tailored to the physical function of the elderly
- Public-Private Partnerships: Suyeong-gu Sports Council

Annual Project Promotion Plan

Category	2023	2024	2025
Performance Index (Unit: Person)	45	45	45
	•Index Definition: Number of program participants		
Project Cost (Unit: 1 million won)	3	3	3

Expected Effects

- Relieving alienation through participation in social activities for the elderly
- Health promotion through participation in physical education programs

Eco Suyeong Environment Protection Silver Volunteer Corps

Project Organization				Project Category
Responsible Division	Family Happiness Division	Responsible Part	Welfare for the Elderly Part	Existing Project

Promotion Background and Necessity

- It is necessary to operate an environmental protection volunteer corps to realize housing and environmental protection in line with local movements in Suyeong-gu
- It is a project led by the elderly, and activities that can promote the physical health of the elderly and contribute as community leaders are needed

Project Goals

- Providing opportunities for senior elderly people to participate in society and contributing to community development and improving self-esteem by participating in environmental administration implementation movements

Project Overview

- Project Period: January 2023 to December 2025
- Main Contents
 - Promoting flogging activities mainly near Gwangalli Beach, Wateside Park, and Suyeong River
 - Support for environmental campaign activities (separate collection, upcycling, etc.), internal volunteer activities, and environmental self-help meetings (experiential activities, production of promotional materials, etc.)
- Public-Private Partnerships: Suyeong-gu Senior Welfare Center, Suyeong-gu Volunteer Center, General and Senior Welfare Center in Suyeong-gu

Annual Project Promotion Plan

Category	2023	2024	2025
Performance Index (Unit: %)	75	80	85
	•Index Definition: Silver Volunteer Corps attendance rate for the current year (capacity 15 as of 2022)		
Project Cost (Unit: 1 million won)	2	2	2

Expected Effects

- Contributing to improving awareness among the elderly and creating a clean street environment
- It is expected to spread environmental protection awareness and encourage local residents to take voluntary action

Project Organization				Project Category
Responsible Division	Smart City Division	Responsible Part	Urban Renewal Planning Part	New Project

Promotion Background and Necessity

- Creation of a cultural space for the elderly where the elderly can spend their leisure time
- Providing a space where the elderly can comfortably enjoy cultural life, such as audio-books, screenings of memorable movies, and installing LP players

Project Goals

- We want to make it possible for the elderly to spend their leisure time comfortably and richly by creating a cultural space for the elderly

Project Overview

- Project Period: January 2023 to December 2025
- Main Contents
 - Project Location: 481-19 Suyeong-dong
 - Project Scale: Remodeling, 2nd floor, total floor area 194.47㎡
 - Facility Configuration:
 - Silver Library (1st floor): 3 audio rooms (male and female), rest room, multi-purpose room, management room, etc.
 - Suyeongsung Theater (2F): 3 movie rooms, 1 movie theater, multi-purpose room, break room, etc.

Annual Project Promotion Plan

Category	2023	2024	2025
Performance Index (Unit: Person)	1,000	1,100	1,200
	•Index Definition: Number of users of Silver Library and Suyeongsung Theater per year		
Project Cost (Unit: 1 million won)	51	51	51

Expected Effects

- Providing opportunities for the elderly to enjoy cultural life by providing a specialized

- cultural space for the elderly through the operation of the Silver Library and Theater
- It is believed that it will be necessary to identify the demand for cultural spaces for the elderly in the local community in the future and establish additional ones that are needed

Project Organization				Project Category
Responsible Division	Smart City Division	Responsible Part	Urban Renewal Planning Part	New Project

Promotion Background and Necessity

- Creation of a physical training space for the elderly and provision of customized exercise programs
- It is necessary to create a fitness training space for elderly people living in areas where sports facilities are scarce or inaccessible

Project Goals

- We want to make it possible to spend leisure time comfortably and richly by providing a fitness training space and exercise program for the elderly

Project Overview

- Project Period: January 2023 to December 2025
- Main Contents
 - Project Location: 423, Suyeong-dong 423-1
 - Project Scale: Remodeling, 2 floors, 2 buildings, total floor area 257㎡, building A (75.71㎡), building B (59.87㎡)
 - Facility Configuration: Senior indoor sports facilities (men and women), village health centers, community spaces, etc.

Annual Project Promotion Plan

Category	2023	2024	2025
Performance Index (Unit: Person)	1,000	1,100	1,200
	•Index Definition: Number of Silver Fitness and Workout Program users per year		
Project Cost (Unit: 1 million won)	60	60	60

Expected Effects

- Realization of differentiated welfare for the elderly by creating a customized health care space for the elderly
- It is necessary to establish additional fitness centers for the elderly living in areas where sports facilities are scarce and accessibility is poor to provide customized exercise programs for the elderly

Project Organization				Project Category
Responsible Division	Family Happiness Division	Responsible Part	Welfare for the Elderly Part	Existing Project

Promotion Background and Necessity

- Increased desire for leisure activities due to changes in seniors' perceptions and improved economic standards
- Increased interest in physical and psychological health
- Increased desire to socialize and build networks within the community

Project Goals

- Promotion of welfare for the elderly by providing lifelong education opportunities and revitalizing leisure culture

Project Overview

- Project Period: January 2023 to December 2025
- Main Contents
 - Providing learning opportunities; promoting leisure activities; promoting socialization; maintaining physical and mental health
 - Classes 1 to 3 times a week

Program Categories	Contents
Hobby · Leisure	Line dance, singing classes, recreation, cultural activities, etc.
Wellness	Health exercises to promote physical health, laughter therapy, infectious disease prevention education, summer and winter health care education, health courses, etc.
Liberal arts	Liberal arts courses, poetry writing, art classes, tea ceremony classes, traffic safety education, etc.

Annual Project Promotion Plan

Category	2023	2024	2025
Performance Index (Unit: Person)	300	350	360
	•Index Definition: Number of program participants per year		
Project Cost (Unit: 1 million won)	31.5	31.5	31.5

Expected Effects

- Satisfy the elderly's desire for leisure activities by forming a local network
- Promoting social participation and addressing loss of social role

Promoting the Establishment of a Mangmi National Sports Center

Project Organization				Project Category
Responsible Division	Administration Support Division	Responsible Part	Life Sports Part	New Project

Promotion Background and Necessity

- Promoting the health of residents of the city and creating a healthy city Suyeong through participation in various sports and cultural activities
- Reduce the infrastructure gap for sports facilities in the region by building a sports center for the elderly living in the Mangmi-dong area where sports facilities are scarce in Suyeong-gu

Project Goals

- Contributing to improving leisure culture and quality of life by creating Mangmi national sports center for the health and happiness of residents of the city

Project Overview

- Project Period: January 2023 to December 2026
- Main Contents
 - Construction of Mangmi National Sports Center (Including swimming pool)
 - Providing customized exercise programs for the elderly

Annual Project Promotion Plan

Category	2023	2024	2025
Performance Index (process rate: %)	10	20	30
	•Index Definition: Promotion rate for the construction of the National Sports Center		
Project Cost (Unit: 1 million won)	94	4,501	7,517

Expected Effects

- Contributing to spreading leisure culture and improving the quality of life of residents of the city by actively responding to increasing demand for physical education
- Improve life satisfaction by running a program for the elderly

Project Organization				Project Category
Responsible Division	Family Happiness Division	Responsible Part	Welfare for the Elderly Part	Existing Project

Promotion Background and Necessity

- Promote local volunteer activities for the elderly to provide opportunities for the elderly to actively participate in society and enhance the use of personal resources provided by the elderly
- It is necessary to establish a practical support system under the Senior Welfare Act by appointing a Community center for the elderly manager who is actively promoting the revitalization of Community center for the elderly and volunteer activities in the community as a local volunteer instructor

Project Goals

- Promoting qualitative and quantitative welfare for the elderly through active promotion and participation in welfare policies and events for the elderly
- Raise pride and revitalize Community center for the elderly by appointing community volunteer instructors

Project Overview

- Project Period: January 2023 to December 2025
- Main Contents
 - Target: Chairman of Community center for the elderly
 - Main Contents:
 - Community center for the elderly facility management, safety management, environmental improvement, epidemic prevention and disease prevention activities
 - Education and guidance for users of leisure and welfare facilities for the elderly (Community center for the elderly)
 - Traffic safety and traffic accident prevention/education for the elderly
 - Promotion and guidance of policies on the elderly implemented by national or local governments
 - Volunteer activities and other work deemed necessary by the head of the Mayor of Suyeong District
 - Management and Operation: Suyeong-gu Branch of the Korean Senior Citizens Association

Annual Project Promotion Plan

Category	2023	2024	2025
Performance Index (Unit: Time)	4,320	4,320	4,320
	•Index Definition: Number of community volunteer instructor activities		
Project Cost (Unit: 1 million won)	56	56	56

Expected Effects

- Satisfy the elderly's desire for leisure activities by forming a local network
- Promoting social participation and addressing loss of social role

Revitalization of the Operation of Leisure and Welfare Facilities for the Elderly

Project Organization				Project Category
Responsible Division	Family Happiness Division	Responsible Part	Welfare for the Elderly Part	Existing Project

Promotion Background and Necessity

- Strengthen the operation and support of leisure and welfare facilities for the elderly so that the elderly can lead a happy and active leisure life in a comfortable environment

Project Goals

- Revitalize and strengthen the operation and support of welfare centers for the elderly and Community center for the elderly to support healthy leisure and cultural activities for the elderly and promote social participation

Project Overview

- Project Period: January 2023 to December 2025
- Target: Welfare centers for the elderly (2 locations) and Community center for the elderly (90 locations)
- Project Contents
 - Revitalization of the operation of welfare centers for the elderly
 - Strengthen administrative and financial support to provide comprehensive welfare, education, and cultural services such as leisure, jobs, and health promotion
 - Development of a joint program between Suyeong-gu and Gwangan Senior Welfare Center
 - Suyeong-gu - Gwangan Senior Welfare Center and Gwangan Senior Welfare Center jointly develop and establish a program jointly operated by Gwangan Senior Welfare Center to provide cultural services without boundaries between welfare centers
 - Revitalizing the operation of Community center for the elderly
 - Promotion of use through the placement of tour program managers and support of various specialized programs for senior citizens
 - Creating a pleasant and safe Community center for the elderly by deploying a dedicated all-around repair engineer for senior citizens

Annual Project Promotion Plan

Category	2023	2024	2025
Performance Index (Unit: Location)	8	10	12
	Development	Operation	Operation
	•Index Definition: Community center for the elderly a specialized program operation and developed a joint program		
Project Cost (Unit: 1 million won)	4,281	4,420	4,567

Expected Effects

- Expanding opportunities for social participation by revitalizing the operation of leisure and welfare facilities for the elderly

5) 5. Respect and Social Inclusion

- To create an age-friendly environment of respect and social inclusion, the elderly actively participate in key decision-making processes within the local community and carry out projects that reduce prejudice and discrimination against the elderly through integrated education and activities between generations
- The specific project plan for respect and social inclusion consists of 5 projects: senior policy discussions with young people, operation of an age-friendly policy monitoring team, the Golden Bell for generation, support for health benefits for low-income seniors, and the Gomsol Hanmaum Festival

Domain	No.	Project Name	Promotion Division	Category
Respect and Social Inclusion	5-1	Senior Policy Discussions with Young & Adults	Suyeong District Office Family Happiness Division Welfare for the Elderly Part	New
	5-2	Operation of an Age-Friendly Policy Monitoring Team	Suyeong District Office Family Happiness Division Welfare for the Elderly Part	New
	5-3	Golden Bell Communicates Between Generations	Suyeong District Office Family Happiness Division Welfare for the Elderly Part	New
	5-4	Support for 'Healthy Filial Piety Allowance' for Low-income Seniors	Suyeong District Office Family Happiness Division Welfare for the Elderly Part	New
	5-5	Gomsol Hanmaum Festival	Suyeong District Office Family Happiness Division Welfare for the Elderly Part	Continue

* Continue: Maintenance of existing project (no changes), Expansion: Expansion of existing project, New: New projects or projects proposed by researchers in Suyeong-gu as of 2023

Project Organization				Project Category
Responsible Division	Family Happiness Division	Responsible Part	Welfare for the Elderly Part	Research Team Proposal Project

Promotion Background and Necessity

- The disconnect between the younger generation and the elderly is deepening, and opportunities for communication are lacking
- The opinions of the elderly are not well reflected in key policies and decision-making processes

Project Goals

- Promoting exchanges between the elderly and young generations through meetings on major senior policies

Project Overview

- Project Period: January 2023 to December 2025
- Main Contents
 - Providing opportunities for intergenerational communication by holding policy advisory discussions for the elderly and young & adults to discuss major issues in the community
 - Gathering opinions from the elderly on major issues in the community through the 'Senior Policy Advisory Committee'

Annual Project Promotion Plan

Category	2023	2024	2025
Performance Index (Unit: Case)	2	2	2
	•Index Definition: Number of meetings held		
Project Cost (Unit: 1 million won)	Non-budget	Non-budget	Non-budget

Expected Effects

- Reducing conflict and promoting mutual understanding between the young & adult generation and the elderly
- Able to gather opinions from the elderly on major issues in the community and reflect them in the decision-making process

Project Organization				Project Category
Responsible Division	Family Happiness Division	Responsible Part	Welfare for the Elderly Part	Research team proposal project

Promotion Background and Necessity

- In Suyeong-gu, 23% of the total population entered a super-aged society with 23% of the total population over the age of 65
- The need to create age-friendly cities is increasing due to an aging population, and intergenerational solidarity is needed to monitor this

Project Goals

- Policy monitoring to create an age-friendly city in Suyeong-gu

Project Overview

- Project Period: January 2023 to December 2025
- Main Contents
 - Developing and monitoring necessary services and policies in line with the standards of the WHO's the Eight interconnected domains for age-friendly cities
 - In order to differentiate oneself from the monitoring group of the elderly-friendly policies of other cities and provinces, a policy monitoring group, including the elderly as well as the youth generation, is formed and regular meetings are held.

Annual Project Promotion Plan

Category	2023	2024	2025
Performance Index (Unit: Time)	4	5	6
	•Index Definition: Number of Age-Friendly Policy Monitoring Team operations per year		
Project Cost (Unit: 1 million won)	1	1	1

Expected Effects

- Can provide basic data for Suyeong-gu to become a more age-friendly city
- Through an age-friendly policy monitoring team, it is possible to create a livable environment in Suyeong-gu not only for the elderly but also for the younger generation

Project Organization				Project Category
Responsible Division	Family Happiness Division	Responsible Part	Welfare for the Elderly Part	New Project

Promotion Background and Necessity

- There are very few opportunities for interaction between the first and third generations within the local community
- Patterns of conflict between generations and lack of activities to change perceptions of the elderly in the region

Project Goals

- Improving the awareness of the elderly in the region and contributing to the cultivation of a sense of community among the elderly

Project Overview

- Project Period: January 2023 to December 2025
- Main Contents
 - Through pre-orientation, a place for traditional play experiences and generational empathy conversations for the 1st to 3rd generations to hang out together is prepared
 - Golden Bell for 1st-3rd Generation Integration
 - Verification of changes in self-efficacy before and after program participation
- Public-Private Partnerships: Gwangan Senior Welfare Center, elementary and middle schools in the community

Annual Project Promotion Plan

Category	2023	2024	2025
Performance Index (Unit: %)	80	90	100
	•Index Definition: Event participation rate (Actual Participants/Target Participants) * 100		
	-	3	5
	•Index Definition: Growth rate of self-efficacy pre- and post-test scores		
Project Cost (Unit: 1 million won)	3	3	3

Expected Effects

- Through smooth communication between generations, understanding between generations, improving the satisfaction and confidence of the elderly in the community
- Improving the self-efficacy of the elderly through continuous participation

5-4

Support for ‘Healthy Filial Piety Allowance’ for Low-income Seniors

Project Organization				Project Category
Responsible Division	Family Happiness Division	Responsible Part	Welfare for the Elderly Part	New Project

Promotion Background and Necessity

- Economic inequalities within the Suyeong-gu senior population group are increasing
- There is a lack of direct cash services for the elderly who experience economic inequalities and isolation within the community

Project Goals

- We want to support ‘Healthy Filial Piety Allowance’ for healthy aging activities and the spread of filial piety culture for low-income elderly people over 70 years of age in the jurisdiction

Project Overview

- Project Period: January 2023 to December 2025
- Main Contents
 - On the occasion of Seniors’ Day (10.2.) every year, deposit money into a low-income elderly benefit account
 - Targeting Public aid recipients and senior citizens over the age of 70 in the jurisdiction
 - ‘Healthy Filial Piety Allowance’ 100,000 won (Once a year) /provided per person

Annual Project Promotion Plan

Category	2023	2024	2025
Performance Index (Unit: %)	90	90	90
	•Index Definition: (Actual number of payers/payees) *100 (90% or more achieved)		
Project Cost (Unit: 1 million won)	340	340	340

Expected Effects

- It is necessary to maintain minimal safety activities to maintain the health and happy lives of the elderly
- Creating an atmosphere for the spread of filial piety culture by appreciating the

elderly who have spread the breeze of filial piety and inherited and developed traditional culture

Project Organization				Project Category
Responsible Division	Family Happiness Division	Responsible Part	Welfare for the Elderly Part	Existing Project

Promotion Background and Necessity

- To commemorate Parents' Day in May, thank the elderly in the region and express their feelings of filial piety
- Promote welfare centers and revitalize the welfare center project by increasing the number of people using welfare centers

Project Goals

- In commemoration of Parents' Day in May, thank the elderly in the region for their gratitude and expression of filial piety, and promote the use of welfare centers

Project Overview

- Project Period: May 2023 to December 2025 (Once a year)
- Main Contents
 - Delivery of carnations: Delivery of special meals and souvenirs for Parents' Day
 - Operation of the festival: Operate celebratory performances, experience booths, and visiting booths and ask for cooperation. Taking advantage of the work in the photography class
 - Scholarship support for young people from low-income grandchildren: Among those subject to case management, two generations of grandchildren in the jurisdiction are secured and selected, and scholarships are paid
- Public-Private Partnerships: Suyeong-gu Senior Welfare Center, Busan West Senior Care Agency, Dongmyung University Volunteer Corps, Namcheon Beach Market, Busan Metropolitan City Women's Short-term Youth Shelter, Suyeong Paldo Market, VMS, 1365, Media outlets, etc.

Annual Project Promotion Plan

Category	2023	2024	2025
Performance Index (Unit: %)	90	95	100
	•Index Definition: Annual event participation rate (%) (Actual number of participants/target number of visitors) * 100		
Project Cost (Unit: 1 million won)	5	5	5

Expected Effects

- To commemorate Parents' Day in May, thank the elderly in the region and express their feelings of filial piety
- Promoting the use of welfare centers by promoting institutions through events visited in markets where many elderly people come and go in the region

6) 6. Civic Participation and Employment

- For age-friendly Civic Participation and Employment, we developed volunteer activities in which various elderly people can participate, and carried out employment and entrepreneurship program support projects based on the needs of retired elderly people.
- The specific project plan for Civic Participation and Employment consists of 9 projects: an urban renewal commentator for Dodo Suyeong for the elderly, all-day care facility support, HF generation gathering ‘Latte is...’ (It means ‘When I was young...’), an exciting fairy tale performance, a senior child care project group, a warm meal project group, revitalizing the operation of job center, Support for employment support expenses for senior security guards, and a new middle-aged life road rest-area project

Domain	No.	Project Name	Promotion Division	Category
Civic Participation and Employment	6-1	Dodo Suyeong Urban Renewal Guide for the Elderly	Suyeong District Office Smart City Division Urban Renewal Planning Part	New
	6-2	Support for All-day Care Facilities	Suyeong District Office Family Happiness Division Welfare for the Elderly Part	Continue
	6-3	HF Generation Group ‘Latte is...’ (It means ‘When I was young...’)	Suyeong District Office Family Happiness Division Welfare for the Elderly Part	Expansion
	6-4	Exciting Fairy Tale Performance	Suyeong District Office Family Happiness Division Welfare for the Elderly Part	Expansion
	6-5	Senior Child Care Project Group	Suyeong District Office Family Happiness Division Welfare for the Elderly Part	New
	6-6	Warm Rice One Meal Project Group	Suyeong District Office Family Happiness Division Welfare for the Elderly Part	New
	6-7	Revitalizing the Operation of Job Center	Suyeong District Office Job and Economy Division Job Creation Part	Continue
	6-8	Support for Employment Support Expenses for Senior Security Guards	Suyeong District Office Job and Economy Division Job Creation Part	Continue
	6-9	New Middle-Aged Life Road Rest-area Project	Suyeong District Office Welfare Policy Division Welfare Planning Part	New

* Continue: Maintenance of existing project (no changes), Expansion: Expansion of existing project, New: New projects or projects proposed by researchers in Suyeong-gu as of 2023

Project Organization				Project Category
Responsible Division	Smart City Division	Responsible Part	Urban Renewal Planning Part	Existing Project

Promotion Background and Necessity

- The participation rate of the elderly in volunteer activities is low, and there is a shortage of various jobs that take into account the aptitude of the elderly
- There are not enough opportunities to introduce Suyeong-gu's diverse culture and history to the younger generation and foreign tourists in the region

Project Goals

- Promoting various urban renewal projects in Suyeong-gu to revitalize jobs for the elderly

Project Overview

- Project Period: January 2023 to December 2025
- Main Contents
 - Elderly people with knowledge about Suyeong-gu's culture and history provide an opportunity to explain it to local residents
 - In the case of Suyeong-gu, it is an area visited by many tourists, and elderly people participate in job projects or volunteer activities as guide on various urban renewal projects for them
- Public-Private Partnerships: Busan Urban Regeneration Center (B-con Ground), Suyeong-gu Urban Renewal Support Center

Annual Project Promotion Plan

Category	2023	2024	2025
Performance Index (Unit: Case)	130	140	150
	•Index Definition: Number of annual tours for the Urban Renewal Commentary Program		
Project Cost (Unit: 1 million won)	10	10	10

Expected Effects

- New jobs can be provided to the elderly in Suyeong-gu

○ Through ‘Urban Renewal Guide’ project, it is possible to promote Suyeong-gu not only through communication with local residents but also through communication with tourists

Project Organization				Project Category
Responsible Division	Family Happiness Division	Responsible Part	Welfare for the Elderly Part	Existing Project

Promotion Background and Necessity

- There are 5 local children's centers in Suyeong-gu, and 2 new all-day care facilities were established in Suyeong-gu in '21
- On average, more than 30 children use each local children's center, but there is a huge shortage of manpower for social workers alone
- Volunteers visit, but since many of them are one-off and short-term volunteers, it is difficult to operate

Project Goals

- Community contribution through program support, living and meal support in local child centers and care facilities

Project Overview

- Project Period: January 2023 to December 2025
- Main Contents
 - Providing various services such as program support and living and meal support in facilities such as local child centers and care facilities
 - In addition to caring for children, they participated in a generation exchange program for the first and third generations
- Public-Private Partnerships: Busan Suyeong Senior Club

Annual Project Promotion Plan

Category	2023	2024	2025
Performance Index (Unit: Person)	25	30	30
	•Index Definition: Number of job participants in the All-Day Care Facility Support Project		
Project Cost (Unit: 1 million won)	198	238	238

Expected Effects

- Reduce the workload of those in charge by supporting various work activities such as

programs and in-facility lunch assistance

- Providing opportunities for social participation according to individual areas of interest, intergenerational exchange, and opportunities to contribute to local communities

6-3

HF Generation Group ‘Latte is...’ (It means ‘When I was young...’)

Project Organization				Project Category
Responsible Division	Family Happiness Division	Responsible Part	Welfare for the Elderly Part	Expansion of existing project

Promotion Background and Necessity

- Establishing a proper understanding and sense of trust for the elderly through programs that enable diverse communication between generations 1 – 3
- Ensuring a stable life in old age by generating income from economic activity
- It is possible to participate in various jobs using talents

Project Goals

- Supplementing income, expanding social participation, promoting health, and creating social value through the provision of jobs for the elderly

Project Overview

- Project Period: January 2023 to December 2025
- Main Contents
 - Creation of a place for harmony for elementary school students at the fishery festival by making coffee fresheners using coffee bean residue and making soy candles containing coffee beans
 - Integration of 1-3 generations through activities aimed at making fruit lunch boxes and drip bags for high school students
- Public-Private Partnerships: Busan Suyeong Senior Club

Annual Project Promotion Plan

Category	2023	2024	2025
Performance Index (Unit: Person)	20	20	25
	•Index Definition: Number of elderly people and students participating in the project		
Project Cost (Unit: 1 million won)	5	5	5

Expected Effects

- It is possible to promote a positive perception of the elderly by communicating directly

with students in the local community and sharing experiential activities

- ‘Although the generations are different, the common job of being a barista’ can bridge the gap between generations and contribute to the development of the coffee project in the region
- You can learn about the life experiences and secrets of the elderly who cannot learn at school

Project Organization				Project Category
Responsible Division	Family Happiness Division	Responsible Part	Welfare for the Elderly Part	Expansion of existing project

Promotion Background and Necessity

- The number of preschoolers becoming nuclear families in daycare centers and kindergartens in the region is increasing
- Lack of opportunity to communicate with grandparents requires programs such as story grandmother and grandfather

Project Goals

- Providing high-quality storytelling services in the community by improving the expertise of participants by transferring experience and years of experience

Project Overview

- Project Period: January 2023 to December 2025
- Main Contents
 - It is dispatched as a fairy tale story instructor, such as daycare centers and kindergartens in Suyeong-gu, and uses hand gestures to convey traditional fairy tales or interesting stories to children according to the characteristics and situations of the characters.
- Public-Private Partnerships: Busan Suyeong Senior Club

Annual Project Promotion Plan

Category	2023	2024	2025
Performance Index (Unit: Person)	10	12	15
	•Index Definition: Number of participants in the Exciting Fairytale Performance Job Project		
Project Cost (Unit: 1 million won)	32	38	45

Expected Effects

- Providing children with proper emotional development and at the same time providing a worthwhile life for the elderly
- Facilitating communication between generations with children through participation in jobs in the form of regional experiences and years of training activities

Project Organization				Project Category
Responsible Division	Family Happiness Division	Responsible Part	Welfare for the Elderly Part	New Project

Promotion Background and Necessity

- As the birth rate continues to decline due to the burden of child care due to the increase in working couples, the problem of low birth rate has become serious
- There is a high demand for child care services to fill the gaps in care that occur between working couples and commute to work, but there is a shortage of manpower to operate various projects

Project Goals

- Minimizing gaps in care that occur when working couples commute to work

Project Overview

- Project Period: January 2023 to December 2025
- Main Contents
 - Providing child care services to fill the gap in care between commuting hours for working couples
 - Providing customized babysitting services for working couples
- Public-Private Partnerships: Busan Suyeong Senior Club

Annual Project Promotion Plan

Category	2023	2024	2025
Performance Index (Unit: Person)	-	10	15
	•Index Definition: Number of participants in the caregiving project group job project		
Project Cost (Unit: 1 million won)	-	79	119

Expected Effects

- Expanding employment creation opportunities by utilizing the expertise of older generations with extensive experience in raising children
- Reduce the burden of parenting on working families by increasing demand for

caregivers to fill gaps in child care

○ Prejudice against the elderly is reduced and the effects of generational integration are expected

Project Organization				Project Category
Responsible Division	Family Happiness Division	Responsible Part	Welfare for the Elderly Part	New Project

Promotion Background and Necessity

- It is necessary to provide affordable and nutritious meals for children concerned about losing weight
- There is a lack of social contribution activities for the elderly for low-income vulnerable children in the community

Project Goals

- Providing nutritious food to vulnerable children in need of care

Project Overview

- Project Period: January 2023 to December 2025
- Main Contents
 - A service that provides nutritious meals to vulnerable children
 - Providing services as a method of reception and discovery through recommendations from applicants or people around them
- Public-Private Partnerships: Busan Suyeong Senior Club

Annual Project Promotion Plan

Category	2023	2024	2025
Performance Index (Unit: Person)	-	30	30
	•Index Definition: Number of job-participants and diet-supported children		
Project Cost (Unit: 1 million won)	-	10	10

Expected Effects

- It can serve as an opportunity to promote children's rights, such as improving the quality of life of children who are concerned about fasting, and can provide children with a warm daily life and help them grow healthy
- Caring for children in welfare blind spots, communicating, and eliciting consensus so that they can have a positive impact

- It supports nutritious and good food to the fullest and can expect children to grow up healthy in the future
- Promoting a sense of belonging, life satisfaction, and self-development of participating elderly people
- Satisfy the needs of the elderly for social activities through the creation of healthy jobs for the elderly

Project Organization				Project Category
Responsible Division	Job and Economy Division	Responsible Part	Job Creation Part	Existing Project

Promotion Background and Necessity

- Support for the happy tomorrow of Gu residents by providing the best employment services and providing the foundation for start-ups through the revitalization of the Job Center

Project Goals

- Creating a high-quality job ecosystem by enhancing the employment rate of Gu residents and resolving difficulties in corporate recruitment

Project Overview

- Project Period: January 2023 to December 2025
- Project Content: Matching jobs and strengthening the employment capacity of Gu residents through specialized consultations tailored to each class
 - Enhancement of the operation function of the Comprehensive Job Center
 - One-stop private employment linkage support by training field-oriented personnel
 - Eliminate mismatches in job openings by operating dedicated personnel for each project
 - Provide a non-face-to-face video interview space for job seekers and support accompanying interviews
 - Strengthening employment and start-up support services
 - Strengthening the employment capacity of job seekers and promoting job-related education
 - Providing customized job information through the operation of a specialized KakaoTalk channel
 - Support for basic entrepreneurs, such as entrepreneurship academies and special lectures on entrepreneurship

Annual Project Promotion Plan

Category	2023	2024	2025
Performance Index (Unit: Person)	880	900	920
	•Index Definition: The achievement rate of the number of employed persons in public employment service agencies assessed jointly by the government		
Project Cost (Unit: 1 million won)	80	85	90

Expected Effects

- Improving residents' satisfaction by revitalizing the operation and strengthening the functions of the Suyeong-gu Job Center
- Improving the employment rate of Gu residents by operating a job-related general center through consulting with professional counselors, such as customized job matching, finding high-quality jobs, and providing start-up counseling services

Support for Employment Support Expenses for Senior Security Guards

Project Organization				Project Category
Responsible Division	Job and Economy Division	Responsible Part	Job Creation Part	Existing Project

Promotion Background and Necessity

- The need for policy support for maintaining employment of elderly security guards, who are vulnerable to employment, has emerged due to the increase in apartments to introduce unmanned security systems and reduce labor costs

Project Goals

- Creating an economic Suyeong where work and life are in harmony by improving the employment rate of Gu residents by actively supporting the creation of jobs tailored to each target

Project Overview

- Project Period: January 2023 to December 2025
- Target: Multi-family housing with less than 100 households in the jurisdiction that employs and creates security guards for senior citizens aged 55 or older with resident registration in Suyeong-gu
- Support Content: A maximum of 570,000 won per month based on the minimum wage is paid to one selected apartment security guard for two years as employment maintenance support
- Payment Method: Deposit into an account dedicated to apartment subsidies
- Apply Method: Apply for a visit to the Job Center

Annual Project Promotion Plan

Category	2023	2024	2025
Performance Index	Promotion	Promotion	Promotion
	•Index Definition: Whether to promote a project		
Project Cost (Unit: 1 million won)	33	33	33

Expected Effects

- Create a community employment safety net by supporting employment maintenance grants for elderly security guards in apartment to secure stable jobs for elderly security guards who are vulnerable groups in the employment market

Project Organization				Project Category
Responsible Division	Welfare Policy Division	Responsible Part	Welfare Planning Part	New Project

Promotion Background and Necessity

- Community activities and second life design support for new middle-aged people who are suffering from social isolation problems such as a frustrated sense of belonging and lack of communication space after retirement are needed

Project Goals

- Establishing a social safety net for the new middle-aged and providing opportunities for social participation through community activities

Project Overview

- Project Period: January 2023 to December 2023
 - Decide whether to continue to promote the new project after promoting the project in 2023
- Project Target: About 140 young people in Suyeong-gu (retirees aged 40 to under 65)
- Project Location: Suyeong-gu Plus Happiness Center
- Organization: Suyeong-gu Community Security Council (Secretariat)
- Promotion Content: Community programmes for solving social isolation problems in the new middle age
 - Vocational Skills Enhancement Program: Support for reemployment counseling and vocational adaptation counseling through the linkage of the Suyeong-gu Job Center (four times a year / 40 persons)
 - We are the trend: Lecture education on recent New Middle-Aged policies, employment trends, and Suyeong-gu New Middle-Aged Social Security Research (4 times a year / 40 persons)
 - New Middle-Aged Social Contribution Community: Providing opportunities for community service and talent donation by matching the experiences, knowledge, and skills of the new middle-aged with the local social security council (4 times a year / 40 persons)
 - This is How New Middle-aged People Play: Resting programs such as theme trips to find the dreams of the new middle age and their own strengths and enjoy the new middle age (Twice a year / 20 persons)

Annual Project Promotion Plan

Category	2023	2024	2025
Performance Index (Unit: Case)	4 projects	Undetermined	Undetermined
	*Index Definition: Number of projects/ Decide whether to continue after promoting the project in fiscal year 23		
Project Cost (Unit: 1 million won)	5	-	-

Expected Effects

- Solving social isolation problems and providing opportunities for social participation in new middle-aged people
- Building a Social Safety Net for New Middle-Aged People through Community Activities

7) 7. Communication and Information

- To provide age-friendly Communication and Information delivery, the project focuses on improving digital literacy and expanding access to information for the elderly
- The specific project plan in the domain of Communication and Information consists of 4 projects: digital competence strengthen education, promotion of audio services for the newspaper Saesuyeong that can be heard by ear, quiet tutoring for the elderly, and Producing a resource map of hope and welfare for each life cycle

Domain	No.	Project Name	Promotion Division	Category
8) Communication and Information	7-1	Digital Competence Strengthen Education	Suyeong District Office Administration Support Division Information Computing Part	Expansion
	7-2	Promoting Saesuyeong Audio newspaper Service	Suyeong District Office Planning Strategy Division Media Promotion Part	Continue
	7-3	Quiet Tutoring for the Elderly	Suyeong District Office Lifelong Education Division Lifelong Education Part	Continue
	7-4	Producing a Resource Map of Hope and Welfare for Each Life Cycle	Suyeong District Office Welfare Policy Division Hope Welfare Support Part	Expansion

* Continue: Maintenance of existing project (no changes), Expansion: Expansion of existing project, New: New projects or projects proposed by researchers in Suyeong-gu as of 2023

Project Organization				Project Category
Responsible Division	Administration Support Division	Responsible Part	Information Computing Part	Expansion of existing project

Promotion Background and Necessity

- According to the unmanned and non-face-to-face digital transformation, it is necessary to provide ‘Digital Competence Strengthen Education’ to enhance digital capabilities tailored to the classes and levels of the elderly
- Also, although sufficient education on how to use electronic devices is provided, in reality, the elderly are still fearful and difficult to use when they have to use kiosks alone

Project Goals

- Improve competency level and increase satisfaction in daily life through digital competence strengthen education necessary for daily life

Project Overview

- Project Period: January 2023 to December 2025
- Main Contents
 - Providing customized information education through digital professional instructors

Subjects and Contents	
Digital Fundamentals	Learn the basics of smartphones and computers for digital life
Digital Life	<ul style="list-style-type: none"> · Finance / shopping / transportation / travel necessary for digital life · Government and local government-related public apps/ hobby / leisure · Learn how to use a kiosk
Digital in-depth education	Providing customized courses for certification, employment, entrepreneurship, etc.

Annual Project Promotion Plan

Category	2023	2024	2025
Performance Index (Unit: Person)	2,000	2,000	2,000
	•Index Definition: Number of people who have completed training		
Project Cost (Unit: 1 million won)	17.4	17.4	17.4

Expected Effects

- Learn how to use kiosks and mobile phones to improve the ability to use digital devices on your own in everyday life without the help of others

Project Organization				Project Category
Responsible Division	Planning Strategy Division	Responsible Part	Media Promotion Part	Existing Project

Promotion Background and Necessity

- Older people are experiencing difficulties in acquiring information due to various information media and speedy information distribution
- It is necessary to provide age-friendly Suyeong-gu newspaper for the elderly who are vulnerable to information

Project Goals

- Age-friendly Saesuyeong audio service provided

Project Overview

- Project Period: January 2023 to December 2025
- Main Contents
 - Create audio files for Saesuyeong's main articles every month
 - Individual mailing of CDs for severely visually impaired people over 60 years of age (20 persons)

Annual Project Promotion Plan

Category	2023	2024	2025
Performance Index (Unit: Time)	12	12	12
	•Index Definition: Number of promotion per year		
Project Cost (Unit: 1 million won)	2	2	2

Expected Effects

- Improved ease of information acquisition for older people
- Eliminate information blind spots by improving the ability to utilize information

Project Organization				Project Category
Responsible Division	Lifelong Education Division	Responsible Part	Lifelong Education Part	Existing Project

Promotion Background and Necessity

- Due to reduced social contact and isolation, customized classes for the elderly in single-family households are needed
- Strengthen learning capacity by guaranteeing the right to lifelong education for the elderly who are underprivileged in education

Project Goals

- Providing customized programs for the elderly

Project Overview

- Project Period: January 2023 to December 2025
- Main Contents
 - Support for customized education services for underprivileged learners who visit elderly people who are depressed in old age or those with reduced mobility to support their mental health through education and help them have a time of healing
 - A lifelong learning manager (1 group of 2 persons) is employed as a lecturer, and is using certified lifelong learning course students and lifelong learning clubs to provide more diverse classes

Annual Project Promotion Plan

Category	2023	2024	2025
Performance Index (Unit: Person)	45	50	55
	•Index Definition: Number of seniors who applied for the program		
Project Cost (Unit: 1 million won)	9	10	11

Expected Effects

- The effect of providing healing time through education to depressed elderly people in

old age and preventing solitary deaths by checking the safety of elderly people living alone through regular visits

- Guarantee the learning rights of underprivileged students and provide customized learning support tailored to learners' conditions
- Create jobs and strengthen the learning capacity of our Gu residents by providing opportunities for lifelong learning managers and students to work as instructors

Producing a Resource Map of Hope and Welfare for Each Life Cycle

Project Organization				Project Category
Responsible Division	Welfare Policy Division	Responsible Part	Hope Welfare Support Part	Existing Project

Promotion Background and Necessity

- It is difficult to obtain information because various information is provided sporadically
- It is necessary to provide information tailored to the comprehensive welfare needs of Gu residents

Project Goals

- Providing accurate information by implementing welfare services for each life cycle

Project Overview

- Project Period: January 2023 to December 2025
- Main Contents
 - A booklet is produced every two years for each person and the life cycle of the welfare service

Annual Project Promotion Plan

Category	2023	2024	2025
Performance Index (Unit: EA)	1,000	-	1,000
	•Index Definition: the number of copies of Hope Welfare resource maps		
Project Cost (Unit: 1 million won)	10	-	10

Expected Effects

- Deliver a variety of welfare information tailored to welfare needs in an easy-to-understand manner
- Provide accurate information by implementing welfare services that change every year
- Improved ease of obtaining information

9) 8. Community Support and Health Services

- In order to establish and provide age-friendly community resources and health services, we are proceeding by improving accessibility when using hospitals, promoting mental health, providing convenience in using welfare services, and immediately intervening in various cases through the activation of networks of medical and welfare institutions
- In the domain of Community Support and Health Services, it is conceived as 11 projects: suicide prevention projects for the elderly living alone, Hospital safety companion service, establishment of a Welfare Hanaro Center, The No-no care, customized elderly care service projects, Smart safety notification for the elderly project, Medical and welfare network activation projects, operation of village health centers, dementia management projects, AI/IoT-based health management projects for the elderly, and the establishment and operation of a smart nursing care platform

Domain	No.	Project Name	Promotion Division	Category
Community Support and Health Services	8-1	Suicide Prevention Projects for the Elderly Living Alone	Suyeong District Office Promotion Health Division Mental Health Part	Continue
	8-2	Sir, Let's Go Together! (Hospital safety companion service)	Suyeong District Office Welfare Policy Division Hope Welfare Support Part	Expansion
	8-3	Establishment of the 'Welfare Hanaro Center' to Improve Welfare Services for Residents	Suyeong District Office Finance Affairs Division Property Management Part	Continue
	8-4	The No-no Care	Suyeong District Office Family Happiness Division Welfare for the Elderly Part	Expansion
	8-5	Customized Senior Care Service Project	Suyeong District Office Family Happiness Division Welfare for the Elderly Part	Expansion
	8-6	Smart Safety Notification for the Elderly Project	Suyeong District Office Family Happiness Division Welfare for the Elderly Part	Expansion
	8-7	Medical and Welfare Network Activation Projects	Suyeong District Office Welfare Policy Division Hope Welfare Support Part	Research team proposal project
	8-8	Operation of Village Health Centers	Suyeong District Office Promotion Health Division Family Health Part	Expansion
	8-9	Dementia Management Project for Healthy Senior	Suyeong Public Health Center Mental Health Part	Expansion

	8-10	AI · IoT-based Health Management Projects for the Elderly	Suyeong District Office Promotion Health Division Family Health Part	New
	8-11	Solitary Death ZERO! Establishment and Operation of a Suyeong-gu Smart Platform	Suyeong District Office Welfare Policy Division Hope Welfare Support Part	Continue

* Continue: Maintenance of existing project (no changes), Expansion: Expansion of existing project, New: New projects or projects proposed by researchers in Suyeong-gu as of 2023

Project Organization				Project Category
Responsible Division	Promotion Health Division	Responsible Part	Mental Health Part	Existing Project

Promotion Background and Necessity

- Due to the nature of old age, they experience psychosocial problems such as social isolation, lack of support systems, physical illness, depression among the elderly, and financial difficulties
- The proportion of elderly living alone is expected to increase due to rapid aging

Project Goals

- It aims to establish a psychosocial safety net and contribute to a culture of respect for life by early detection of elderly people living alone at high risk of depression and suicide and providing care services for them

Project Overview

- Project Period: All year round
- Main Contents
 - Project Period: January 2023 to December 2025 (All year round)
 - Project target: Elderly people living alone in Suyeong-gu (Gwangan 2-dong)
 - Organization: Suyeong-gu Mental Health and Welfare Center, Suyeong-gu Public Health Center
 - Promotion content: After a full survey of the depression and suicidal thoughts of the elderly living alone aged 65 or older, high-risk groups are discovered and customized mental health services are provided
 - Future plans: Project to be implemented for elderly people living alone in Mangmi 1-dong in 2023

Annual Project Promotion Plan

Category	2023	2024	2025
Performance Index (Unit: %)	55	55	55
	•Full Survey Rate : Set the average of the depressive and suicidal thoughts survey rate of elderly people living alone in the last 3 years (2019 to 2021) as a target value		
Project Cost (Unit: 1 million won)	41	41	41

Expected Effects

- Alleviating depression through mental health services for people at high risk of suicide
- Eliminating the sense of isolation through linking and providing specialized programs for people at high risk of suicide

Project Organization				Project Category
Responsible Division	Welfare Policy Division	Responsible Part	Hope Welfare Support Part	Expansion of existing project

Promotion Background and Necessity

- Access to medical services is poor because there are elderly people in the community who have difficulty using hospitals and moving around
- Restrictions on access to medical care due to geographical or physical conditions cause problems where treatment cannot be provided at the right time

Project Goals

- Providing companion services to elderly people who have difficulty using and moving to hospitals

Project Overview

- Project Period: January 2023 to December 2025
- Main Contents
 - Training residents with a high desire for volunteer activities in the community as hospital companion managers
 - Providing a one-stop hospital companion service home-hospital-home by matching the target who needs to use the service with the hospital companion manager

Annual Project Promotion Plan

Category	2023	2024	2025
Performance Index (Unit: Person)	20	20	20
	•Index Definition: Number of users of the Secure Companion Service per year		
Project Cost (Unit: 1 million won)	4	4	4

Expected Effects

- Providing customized services by enhancing access to medical care for the elderly in single-person households in medical blind spots
- Expanding integrated care infrastructure by finding new human resources in the region

Establishment of the 'Welfare Hanaro Center' to Improve Welfare Services for Residents

Project Organization				Project Category
Responsible Division	Finance Affairs Division	Responsible Part	Property Management Part	Existing Project

Promotion Background and Necessity

- Elderly people are experiencing difficulties with accessibility when using welfare facilities
- There is an urgent need to improve accessibility and establish an organization that can provide integrated programs

Project Goals

- Satisfying the various welfare needs of residents and carrying out efficient welfare work

Project Overview

- Project Period: 2022 to 2028
- Main Contents
 - Location: 735-4 Gwangan-dong, Suyeong-gu
 - Total Project Cost: The district office project cost of 15.29 billion won (Excluding 27.75 billion won for land purchase)
 - Facility Plan (Draft)

Category	Purpose of each floor
Basement 1&2	Parking Lot
1st floor	Senior Care Center, Elderly Fitness Center, Single Family Support Center
2nd floor	Co-parenting Sharing Center, Dream Start Program Room, VR Experience Center
3rd floor	Welfare Policy Section, Multi-purpose Space, Storage
4th floor	Family Happiness Division, Basic Life Security Division
5th floor	Multi-purpose Space, Cafe, Break Room, Consultation Room, etc.

Annual Project Promotion Plan

Category	2023	2024	2025
Performance Index (Unit: %)	Busan City Management Plan 2030 (Refurbishment) Application (Construction Division)	Design competition (15%)	Design (25%)
	•Index Definition: 2030 Busan Urban Management Plan (Reorganization) Application, Design Competition, Design		
Project Cost (Unit: 1 million won)	0	1,144	1,144

Expected Effects

- Improving welfare services for residents by building a welfare complex

Project Organization				Project Category
Responsible Division	Family Happiness Division	Responsible Part	Welfare for the Elderly Part	Expansion of existing project

Promotion Background and Necessity

- In the case of elderly people in need of protection, life support services other than psychological and emotional support services are needed
- Elderly people who are outside the long-term care insurance system for the elderly are unable to use welfare benefits

Project Goals

- Providing welfare services using elderly personnel to simultaneously support emotional support and life support through care and communication for the elderly in blind spots

Project Overview

- Project Period: January 2023 to December 2025
- Main Contents
 - Provide community news, daily life checks, meals, hygiene checks, welfare and medical service information
 - Expand the project by expanding the number of participants per year
 - Public-Private Partnerships: Busan Suyeong Senior Club

Annual Project Promotion Plan

Category	2023	2024	2025
Performance Index (Unit: Person)	40	45	50
	•Index Definition: Number of job participants in the No-no care project		
Project Cost (Unit: 1 million won)	126	134	157

Expected Effects

- It is possible to expect the effect of caring for the elderly in the welfare blind spot and bringing smooth communication by forming a consensus among the elderly
- Contributing to the promotion of a sense of belonging, life satisfaction, and self-development of the participating elderly through participation in senior jobs
- It is possible to support a safe and convenient life by linking community resources

Project Organization				Project Category
Responsible Division	Family Happiness Division	Responsible Part	Welfare for the Elderly Part	Expansion of existing project

Promotion Background and Necessity

- Demand for care services has increased due to the rapid aging population, the increase in the number of elderly people living alone, and the deterioration of social networks
- There is a need to provide individualized care services that reflect the diverse needs of the elderly

Project Goals

- Various services such as safety confirmation, health care, and daily life support are provided through care

Project Overview

- Project Period: January 2023 to December 2025
- Main Contents
 - Direct service support such as safety support, social participation, life education, and daily life support for citizens over 65 years of age who need care as Public aid recipients, low income class, and basic pensioners
 - Community resource linkage, specialized services, follow-up management services, etc.
 - Public-Private Partnerships: All medical and welfare institutions in the community

Annual Project Promotion Plan

Category	2023	2024	2025
Performance Index (Unit: %)	80	80	80
	•Index Definition: (Number of people eligible for customized care services for the elder/target amount of the project) * 100 (80% or more achieved)		
Project Cost (Unit: 1 million won)	2,622	2,700	2,800

Expected Effects

- Providing appropriate care services to vulnerable elderly people who have difficulty living their daily lives to ensure a stable life after old age, maintain the health of the elderly, and prevent deterioration

Project Organization				Project Category
Responsible Division	Family Happiness Division	Responsible Part	Welfare for the Elderly Part	Expansion of existing project

Promotion Background and Necessity

- Demand for socialization of care due to the increase in the number of elderly people living alone in need of care and the weakening of family care
- There is a need to find ways to resolve the problems of isolation and solitary death of elderly people living alone with weak social networks

Project Goals

- The need for a care system for the elderly living alone as they enter a super-aged society

Project Overview

- Project Period: January 2023 to December 2025
- Main Contents
 - A service that analyzes TV viewing patterns after installing a wired TV set-up box, recognizes a crisis situation when deviates from the pattern for a certain period of time or more, and performs immediate safety checks through life support agents
 - Public-Private Partnerships: Suyeong-gu Senior Welfare Center

Annual Project Promotion Plan

Category	2023	2024	2025
Performance Index (Unit: %)	100	100	100
	•Index Definition: Satisfaction rate of the number of service recipients (180 persons)		
Project Cost (Unit: 1 million won)	6	6	6

Expected Effects

- Establishing a comprehensive social safety net through regular safety checks for elderly people living alone
- Relieving the loneliness and isolation of elderly people living alone

Project Organization				Project Category
Responsible Division	Welfare Policy Division	Responsible Part	Hope Welfare Support Part	Research team proposal project

Promotion Background and Necessity

- Case intervention is difficult because medical and welfare services are being discontinued
- It is necessary to activate networks between medical and welfare institutions within the community for rapid case intervention and problem resolution

Project Goals

- Establishing a network centered around the base institutions of medical and welfare facilities

Project Overview

- Project Period: January 2023 to December 2025
- Main Contents
 - Establishing a public-private partnership network to create an age-friendly city
 - Conduct regular case meetings centered on institutions based in medical and welfare facilities
 - Establishment of a system that can facilitate networks such as client requests, information exchange, and resource sharing for medical and welfare facilities
 - Public-Private Partnerships: All medical and welfare institutions in the community

Annual Project Promotion Plan

Category	2023	2024	2025
Performance Index (Unit: Case)	3	3	3
	•Index Definition: Number of public-private cooperative networks (client requests, information exchange, resource sharing) per year Example: Number of 3for1 Integrated Support Center requests		
Project Cost (Unit: 1 million won)	None	None	None
	※ Non-budget due to plans to build a network based on a simple request		

Expected Effects

- Revitalization of medical and welfare facility networks
- Prompt resolution of cases receiving medical and welfare services

Project Organization				Project Category
Responsible Division	Promotion Health Division	Responsible Part	Family Health Part	Expansion of existing project

Promotion Background and Necessity

- Promoting the implementation of a resident-participatory ‘15 minute healthy lifestyle city’ to improve health equity by deepening the health gap within and between the Busan City region
- It is necessary to provide integrated health care services that can discover health problems with residents and manage themselves on a ‘Dong’ basis

Project Goals

- Closing health gaps within and between regions and creating a collaborative health system environment where residents participate

Project Overview

- Project Period: January 2023 to December 2025
- Main Contents
 - (Health service) Health measurement/consultation, target health management /education, cooperation with related organizations, etc.
 - (Community Organization Activities) Training health leaders, support for health care activities, program management, etc.
 - (Creation of a Healthy Environment) Operation of village health councils, village health surveys, capacity building education, project promotion
 - Public-Private Partnerships: Administrative Welfare Center, Southern Branch of the National Health Insurance Service, Mental Health Welfare Center, medical institutions in the jurisdiction, Community center for the elderly, etc.

Annual Project Promotion Plan

Category	2023	2024	2025
Performance Index (Unit: Case)	5,600	5,600	5,600
	•Index Definition: Number of consultations at the health consultation office in the village health center per year		
Project Cost (Unit: 1 million won)	320	320	320

Expected Effects

- Improvement of health index by establishing a resident-led health care system in the 'Dong' unit
- Improving health benefits by improving access to health care services

Project Organization				Project Category
Responsible Division	Suyeong Public Health Center	Responsible Part	Mental Health Part	Expansion of existing project

Promotion Background and Necessity

- Due to the rapid aging population and increase in dementia patients, efforts to create a dementia-friendly environment are needed to improve negative perceptions of dementia

Project Goals

- Creating a mental health-friendly environment where local communities work together

Project Overview

- Project Period: January 2023 to December 2025
- Main Contents
 - Conduct on-site screening for dementia and in-person screening for people at high risk of dementia
 - Conducting screening tests, diagnostic tests, and differential tests for dementia
 - Happy shelter, operation of dementia prevention and cognitive enhancement programs, implementation of Korean medicine dementia prevention and management projects
 - Support for families with dementia patients such as family classes and healing programs through analysis of the burden of care
 - Support for dementia treatment costs and conduct daily courses on dementia prevention
- Public-Private Partnerships
 - 3 contract medical institutions (BHS Hanseo Hospital, Park Won-wook Hospital, Good Kangan Hospital)
 - 1 branch of Dementia Relief Center (Gwangan Senior Welfare Center)
 - Dementia Relief Village (10 locations in Gwangan 1-dong Dementia Safety Center)

Annual Project Promotion Plan

Category	2023	2024	2025
Performance Index (Unit: Case)	5,500 / 550 / 110	5,600 / 560 / 110	5,700 / 570 / 120
	<p>•Index Definition: Number of screening, diagnosis, and differential tests for dementia</p> <p>- Basis for setting performance Index: It is important to detect dementia early and treat and manage it at an appropriate time</p> <p>- Grounds for setting goals: Ratio of early screening performed compared to the population 60 years of age or older: 10%</p>		
Project Cost (Unit: 1 million won)	882	886	900

Expected Effects

- Increased target satisfaction by establishing region-centered dementia safety services and providing qualitative services
- Implementing a safe local environment from dementia through continuous dementia management

Project Organization				Project Category
Responsible Division	Promotion Health Division	Responsible Part	Family Health Part	New project

Promotion Background and Necessity

- Raising the need to expand non-face-to-face health care services based on digital healthcare after COVID-19

Project Goals

- Providing non-face-to-face health care services for the elderly based on artificial intelligence (AI) and the Internet of Things (IOT)

Project Overview

- Project Period: July 2023 to December 2025

*Operation of the project for 6 months in accordance with the guidelines

- Main Contents

- 160 senior citizens aged 65 or older (Centered on visiting health care projects) who need to manage weak and chronic diseases and improve health care behavior
- Providing health-related devices (blood pressure monitors, scales, etc.) and using today's health apps
- Screening results for chronic diseases and health behaviors are given individual missions that can be implemented for 6 months
- Using incentives, individual missions are given every one to two months, and self-health care is induced by inducing continuous practice
- Step-by-Step Initiatives
 - [Step 1] Subject Consent and Registration ▸ [Step 2] Advance Health Screening, Group Classification ▸ [Step 3] Device Distribution and App Execution ▸ [Step 4] Non-Face-to-Face Health Management ▸ [Step 5] Post-Health Screening ▸ [Step 6] Decide to Exit/Continue to Participate
- Public-Private Partnerships: Korea Health Promotion Institute, Korea Social Security Information Service

Annual Project Promotion Plan

Category	2023	2024	2025
Performance Index (Unit: Person)	160	184	212
	•Index Definition: Number of people participating in health care projects for the elderly		
Project Cost (Unit: 1 million won)	98	160	176

Expected Effects

- Strengthening care services and improving the quality of life for the elderly through the establishment of smart medical and nursing infrastructure

Solitary Death ZERO! Establishment and Operation of a Suyeong-gu Smart Platform

Project Organization				Project Category
Responsible Division	Welfare Policy Division	Responsible Part	Hope Welfare Support Part	Existing Project

Promotion Background and Necessity

- As the incidence of solitary deaths increases along with the increase in single-person households, it is necessary to prepare for the unpredictable risk of solitary deaths
- The importance of non-face-to-face services in the event of disasters such as infectious diseases is being emphasized, so it is necessary to expand seamless non-face-to-face welfare services

Project Goals

- Eliminate gaps in care and prevent solitary deaths by establishing and operating a regular monitoring system using IoT technology

Project Overview

- Project Period: January 2023 ~ Continued
 - Main Contents
 - Establishing a 24 hours, 365 days monitoring system by installing a smart care plug* to confirm the safety of groups at risk of solitary deaths
- * Smart care plug: A system that prevents solitary death by notifying officials in charge through a system when changes in household lighting and electricity usage do not occur for a certain period of time

Annual Project Promotion Plan

Category	2023	2024	2025
Performance Index (Unit: EA)	800	900	1,000
	*Index Definition: Number of devices that operate smart care plugs		
Project Cost (Unit: 1 million won)	17	30	33

Expected Effects

- Prevention of risk of solitary deaths and various safety accidents through customized monitoring
- Eliminate the sense of isolation by securing a complete social safety net for residents with gaps in care