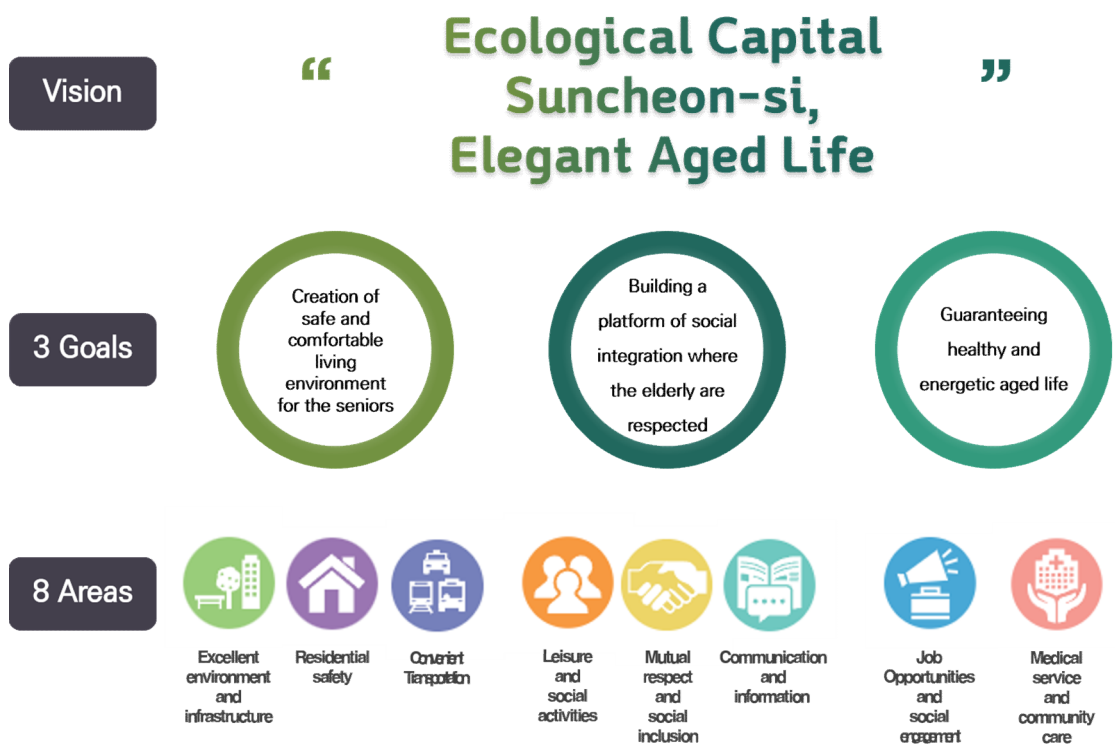


# 1. Vision map of the 2<sup>nd</sup> Suncheon-si Age Friendly City

- The vision for the 2<sup>nd</sup> Suncheon-si is “Ecological Capital Suncheon-si, Elegant Aged Life” and set up 3 goals and 8 areas as below
  - 3 goals are ‘Creation of safe and comfortable living environment for the seniors’, ‘Building a platform of social integration where the elderly are respected’, and ‘Guaranteeing healthy and energetic aged life’
  - 3 goals were developed to reflect WHO’s 8 areas
    - Creation of safe and comfortable living environment for the seniors → Outdoor Spaces and Buildings, Housing, Transportation
    - Building a platform of social integration where the elderly are respected → Social Participation, Respect and Social Inclusion, Communication and Information
    - Guaranteeing healthy and energetic aged life → Civic participation and employment, Community support and health services

Vision map of the 2nd Suncheon-si Age Friendly City



## 2. Projects for Suncheon–si Age Friendly City

### 1) Goal 1 : Creation of safe and comfortable living environment for the seniors

#### Outdoor Spaces and Buildings

Projects	2024	2025	2026	2027	2028	2029
A garden city, Roadside trees forest road construction	○	○	○	○	○	○
Evergreen street view creation and management	○	○	○	○	○	○
A forest resting place, Suncheon natural recreational forest	○	○	○	○	○	○
Participatory implementation of policies on climate change	○	○	○	○	○	○
Open toilet designation	○	○	○	○	○	○

#### Housing

Projects	2024	2025	2026	2027	2028	2029
Happy Nest Project, a house renovation project for the low–come	○	○	○	○	○	○
Renewable energy supply project for energy self sufficiency	○	○	○	○	○	○
Energy welfare project for the disadvantaged	○	○	○	○	○	○
Safe and happy home cleaning project	○	○	○	○	○	○

#### Transportation

Projects	2024	2025	2026	2027	2028	2029
Traffic safety facilities maintenance and expansion	○	○	○	○	○	○
Expansion of convenient transportation project for the transportation disadvantaged	○	○	○	○	○	○
School zone renovation project for the safer school commuting roads	○	○	○	○	○	○
Safety management system construction	○	○	○	○	○	○
Safe culture campaign with the citizens	○	○	○	○	○	○
Support of the electric assistive devices for the disabled	○	○	○	○	○	○

## 2) Goal 2 : Building a platform of social integration where the elderly are respected

### Social Participation

Projects	2024	2025	2026	2027	2028	2029
Elderly sports activities for an energetic aged life	○	○	○	○	○	○
Suncheon cultural heritage utilization project	○	○	○	○	○	○
Culture and art program	○	○	○	○	○	○
Volunteer work promotion for building a warm local community	○	○	○	○	○	○
Inter-generation integration culture&art activities support (Senior welfare center program)	○	○	○	○	○	○
Daily sports facilities construction for all citizens	○	○	○	○	○	○

### Respect and Social Inclusion

Projects	2024	2025	2026	2027	2028	2029
Support center for the families of the disabled	○	○	○	○	○	○
Health expense support for the self-support program participants	○	○	○	○	○	○
Continuous learning! Adult literacy school	○	○	○	○	○	○
Senior social contribution award	○	○	○	○	○	○
Senior welfare card	○	○	○	○	○	○

### Communication and Information

Projects	2024	2025	2026	2027	2028	2029
Village lifelong learning center	○	○	○	○	○	○
Village education community building	○	○	○	○	○	○
First class administration - complaint processing thorough citizen-centered communication	○	○	○	○	○	○
Multi channel PR of city administration	○	○	○	○	○	○

### 3) Goal 3 : Guaranteeing healthy and energetic aged life

#### Civic participation and employment

Projects	2024	2025	2026	2027	2028	2029
Jobs for the seniors	○	○	○	○	○	○
Senior center coordinator training	○	○	○	○	○	○
Second life center for the middle aged	○	○	○	○	○	○
Suncheon senior vigilante	○	○	○	○	○	○

#### Community support and health services

Projects	2024	2025	2026	2027	2028	2029
Early detection & cure support of chronic infectious disease	○	○	○	○	○	○
Chronic disease management program for seniors	○	○	○	○	○	○
Customized care service for seniors living alone	○	○	○	○	○	○
Senior center of empathy and communication	○	○	○	○	○	○
Expansion of support for senior welfare facilities	○	○	○	○	○	○
Dementia treatment expense support for all citizens	○	○	○	○	○	○
Smart remote health care program for seniors	○	○	○	○	○	○
Integrated community care service	○	○	○	○	○	○
Emergency welfare support	○	○	○	○	○	○
Remote care AI robot provision	○	○	○	○	○	○
Safe health management for seniors living alone (IoT)	○	○	○	○	○	○
Wearable device for chronic disease management of the seniors	○	○	○	○	○	○
Family doctor program for people with moving difficulties	○	○	○	○	○	○
Triple care program to prevent lonely deaths with AI	○	○	○	○	○	○

### 3. Performance Indicators

- Performance of each project will be evaluated by three methods: ① Individual project evaluation, ② Evaluation by department, ③ Policy evaluation
- Individual project evaluation (quantitative + internal)
  - Evaluation criteria utilize four criteria: achieved, in progress, insufficient, and adjusted

Criteria for evaluation by project

Classification	Details
Achieved (●)	target performance achieved by more than 100%
Progress (◐)	Progressing on project to achieve goals
Insufficient (○)	Project which has not been promoted or is deemed difficult to proceed
Modification (▷)	Replacing the targeted performance

- Evaluation by department (qualitative + internal)
  - Evaluation by Department for Project uses ‘Management by Object(MBO)’ method
  - Evaluation of Project Objectives and Objectives for the implementation year according to the Annual Plan for the Age-Friendly City
  - Reflect On evaluation areas, such as the fidelity of the contents of the plan for creating an Age-friendly city, appropriateness of the implementation process, achievement of goals, and the participation and satisfaction of local residents

### Criteria for Evaluation by Department for Project

Evaluation	Performance Indicators		Score
Planning	Connectivity	· Relation to the Basic plan for a low birth rate and aging society	7
	Objective project selection	· Similarity to or overlap with other projects	6
	Administration and Finance Plan	· Enactment of project-related ordinances, budgeting, and etc.	7
Implementation	Input /Output	· Appropriate performance index calculation and budget input	10
	Procedure	· Appropriate implementation plan execution procedure (including implementation of changes)	10
	Monitoring	· Adequate monitoring of project implementation	10
Goal Achievement	Achievement of target performance	· Achievement of target performance (target level)	10
	Budget execution (% of the plan)	· Budget execution rate against plan	10
	Excellence in Performance	· Creation of Age-friendly environment and the necessity to continue	10
Participation and satisfaction of local residents	Private sector participation and cooperation	· Efforts to encourage participation and to collect opinions of the residents / public-private cooperation	7
	Contributions	· Contribution to establishing age-friendly environment and creating an cooperative atmosphere	7
	Local Residents satisfaction	· Satisfaction of residents, including the elderly, on projects	6
Total			100

#### ■ Policy evaluation (qualitative + external)

- Policy evaluation will be carried out by a survey on citizens and elderly, using WHO checklist.
- Response will be measured in 5 point Likert scale
- Evaluation will be carried out biannually to track long term trends
- Policy evaluation is carried biannually, and uses a survey method in order to compare and analyze a long-term trend