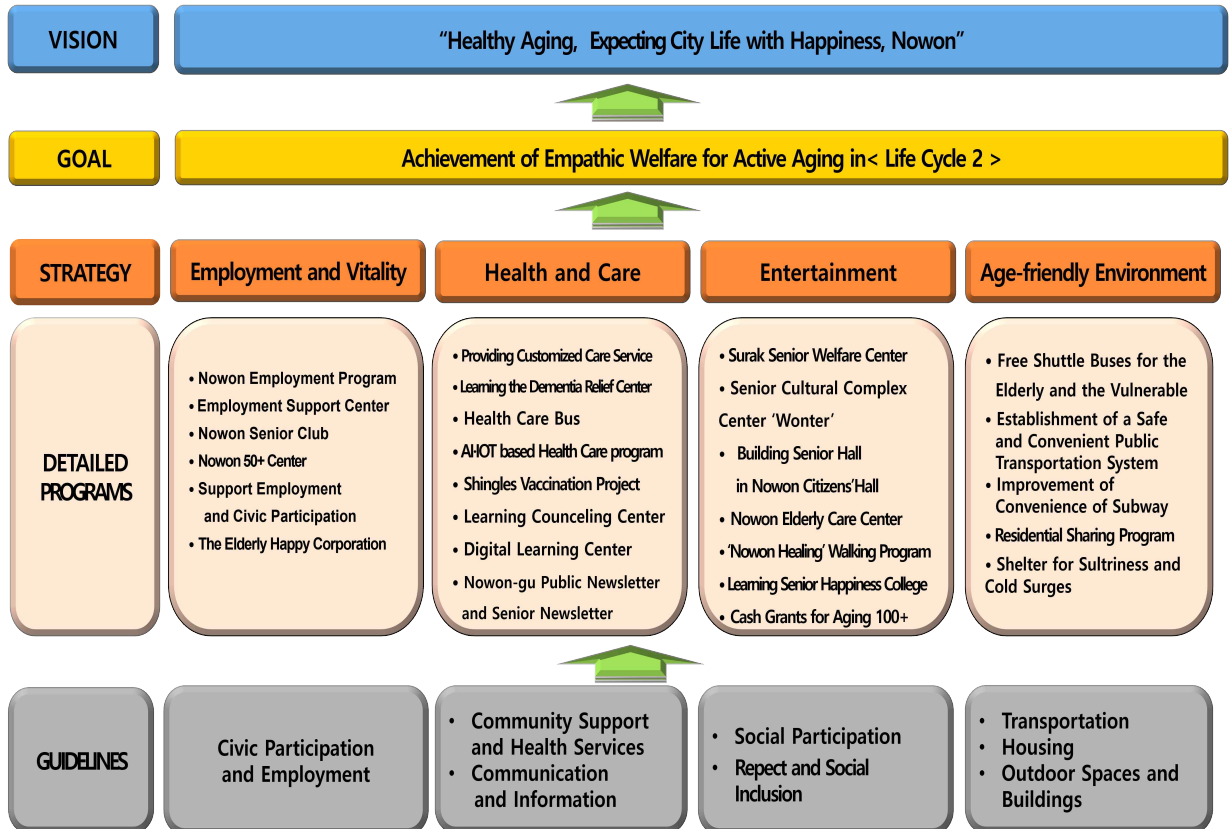


## Action Plan for Age-Friendly City in Nowon-gu

### 1. Vision and Strategy for Age-Friendly City in Nowon

Roadmap to implement tasks for Age-Friendly City in Nowon-gu



## 2. Nowon-gu Age-Friendly City Program for Cycle 2

Nowon-gu Age-Friendly City Program for Cycle 2

Strategy	Guidelines	Programs	Division	
Employment and Vitality	Civic Participation and Employment	1-1. Nowon Employment Program <b>NEW</b>	Senior Citizens' Welfare	
		1-2. Employment Support Center	Senior Citizens' Welfare	
		1-3. Nowon Senior Club	Senior Citizens' Welfare	
		1-4. Nowon 50+ Center	Senior Citizens' Welfare	
		1-5. Support Employment and Civic Participation Program	Senior Citizens' Welfare	
		1-6. The Elderly Happy Corporation	Employment & Economy	
Health and Care	Community Support and Health Services	2-1. Providing Customized Care Service	Senior Citizens' Welfare	
		2-2. Basic Pension	Senior Citizens' Welfare	
		2-3. Providing Treatment for Employees in Senior Welfare Facilities	Senior Citizens' Welfare	
		2-4. Home Benefit Program for Long-term Care Insurance for the Elderly	Senior Citizens' Welfare	
		2-5. Smart Caring the Elderly Living Alone with IoT	Senior Citizens' Welfare	
		2-6. Learning Counselling Center <b>NEW</b>	Senior Citizens' Welfare	
		2-7. Learning the Dementia Relief Center	Medicine	
		2-8. Building Community Consolidated Caring System	Welfare Policy	
		2-9. Health Care Bus	Wolgye Health Branch	
		2-10. 65 aged Senior Welfare Service Seminar <b>NEW</b>	Senior Citizens' Welfare	
		2-11. Counselling Service for Aged 65+	Welfare Policy	
		2-12. Visiting Health Care Program	Health Promotion	
		2-13. AI · IOT based Health Care program	Health Promotion	
		2-14. Solitary Death Prevention Program	Welfare Policy	
		2-15. Dental Care Service	Medicine	
		2-16. Herbal Medicines Program	Wolgye Health Branch	
		2-17. Shingles Vaccination Project <b>NEW</b>	Public Health	
	Communication and Information	Communication and Information	3-1. Nowon-gu Public Newsletter and Senior Newsletter	Media & Public Relations
			3-2. Digital Learning Center for the Elderly <b>NEW</b>	Senior Citizens' Welfare
			3-3. Activating lifelong education programs	Education Support
3-4. Support information service education for the elderly			Education Support	

Strategy	Guidelines	Programs	Division	
Entertainment	Social Participation	4-1. SurakSenior Welfare Center	Senior Citizens' Welfare	
		4-2. Support Learning Small-scale Senior Welfare Center	Senior Citizens' Welfare	
		4-3. Senior Cultural Complex Center 'Wonter' <b>NEW</b>	Senior Citizens' Welfare	
		4-4. Building Senior Hall in Nowon Citizens' Hall <b>NEW</b>	Senior Citizens' Welfare	
		4-5. Environmental Improvement of Senior Citizen Center	Senior Citizens' Welfare	
		4-6. Learning Senior Sports Center <b>EXPANSION</b>	Senior Citizens' Welfare	
		4-7. Learning Youth Cafe	Senior Citizens' Welfare	
		4-8. Learning Youth Theater	Senior Citizens' Welfare	
		4-9. Nowon Elderly Care Center <b>NEW</b>	Senior Citizens' Welfare	
		4-10. 'Nowon Healing' Walking Program <b>NEW</b>	Senior Citizens' Welfare	
		4-11. Walking Forest Program	Senior Citizens' Welfare	
		4-12. Senior Musical Band and Senior Choir	Culture & Sports	
		4-13. Learning Senior Happiness College <b>NEW</b>	Senior Citizens' Welfare	
Respect and Social Inclusion		5-1. Enhancing Events for the Elderly	Senior Citizens' Welfare	
		5-2. Commemorating Senior Citizen's Merit Award	Senior Citizens' Welfare	
		5-3. Learning Nowon 5070 Talent Donation Group	Senior Citizens' Welfare	
		5-4. Cach Grants for Aging 100+	Senior Citizens' Welfare	
		5-5. Volunteer Program with the diversity of the Elderly	Welfare Policy	
Age-friendly Environment	Transportation	6-1. Free Shuttle Buses for the Vulnerables	Senior Citizens' Welfare	
		6-2. Establishment of a Safe and Convenient Public Transportation System	Transportation Administration	
		6-3. Improvement of Convenience of Subway	Transportation Administration	
		6-4. Installing Convenience Facilities on Bus Stop	Transportation Administration	
		6-5. Compensation for Returning Senior Drive License Program	Traffic Guidance	
	Housing		7-1. Replacement of LEDlighting for Welfare Facilities and Vulnerable Groups in Nowon	Carbon Neutrality Party
			7-2. Residential Sharing Program	Welfare Policy
	Outdoor Space and Buildings		8-1. Living Park Regeneration Program	Green City
			8-2. River Ecological Restoration and Greening Projects	Green City
			8-3. Installing Streetlamps and Hanging Pots for Gardening	Green City
8-4. Fostering Barrier-free Forest Roads			Green City	
8-5. Shelter for Sultriness and Cold Surges			Senior Citizens' Welfare	

### 3. Setting Performance Indicators

#### ■ Performance Indicators of Cycle 2 for Nowon-gu Age-Friendly City

The Multi-Faceted Evaluation System

	Quantitative Assessment	Qualitative Assessment
Internal Evaluation	① Evaluation by Project Unit	② Evaluation by Department for Project

#### ■ Evaluation by unit project is conducted according to the implementation rate of performance indicators

- Evaluation criteria utilize four criteria: achievement, progress, insufficiency, and correction

Criteria for evaluation by project (quantitative)

Criteria	Details
Achievement(●)	Target performance achieved by more than 100%
Progress(◐)	Progressing on project to achieve goals
Insufficiency(○)	Project which has not been promoted or is deemed difficult to proceed
Correction(▷)	Replacing the targeted performance

#### ■ Evaluation by Department for Project

- Evaluation by Department for Project uses ‘Management by Object(MBO)’
- Evaluation of project objectives and objectives for the implementation year according to the annual plan of Age-friendly city
- Reflect on evaluation areas such as fidelity of the contents of the plan for creating an elderly-friendly city, appropriateness of the implementation process, achievement of goals, and participation and satisfaction of local residents
- Evaluation areas are divided into 8 areas

Criteria for Evaluation by Department for Project

Evaluation	Performance Indicators		Scores
Fidelity on Action Plan	Connectivity	· Connectivity to the Basic Plan for a Low-birth and Aging Society	7
	Objectivity on Programs	· Similarity or overlap with other projects	6
	Fidelity of an Administrative and Financial Plan	· The Enactment of project-related and budgeting ordinances	7
Appropriateness of the Implementation	Adequacy of Input and Output	· Appropriateness of calculation of performance indicators and budget input	10
	Appropriateness of the Procedure	· Appropriateness of procedures on implementation plan (including implementation of changes)	10
	Monitoring Adequacy	· Adequacy on monitoring of project implementation	10
Goal Achievement of Execution	Achievement of performance targets	· Achievement of performance target (target level)	10
	Budget execution rate against plan	· Budget execution rate against plan	10
	Excellence in Performance	· Necessity to create Age-friendly environment and continue to promote it in the future	10
Participation and satisfaction of local residents	Private sector participation and cooperation	· Efforts to participate in residents and collect opinions and public-private cooperation	7
	Contributions	· Contribution to establishing age-friendly environment and creating an atmosphere	7
	Satisfaction Level of Local Residents	· Project satisfaction of residents, including the elderly	6
<b>Total</b>			<b>100</b>