

ADVISORY COMMITTEE ON AGING

Age Friendly Work Plan 2018



Steve Andrejiw
Steve.andrejiw@rmwb.ca

AGE-FRIENDLY NEEDS ASSESSMENT SUMMARY

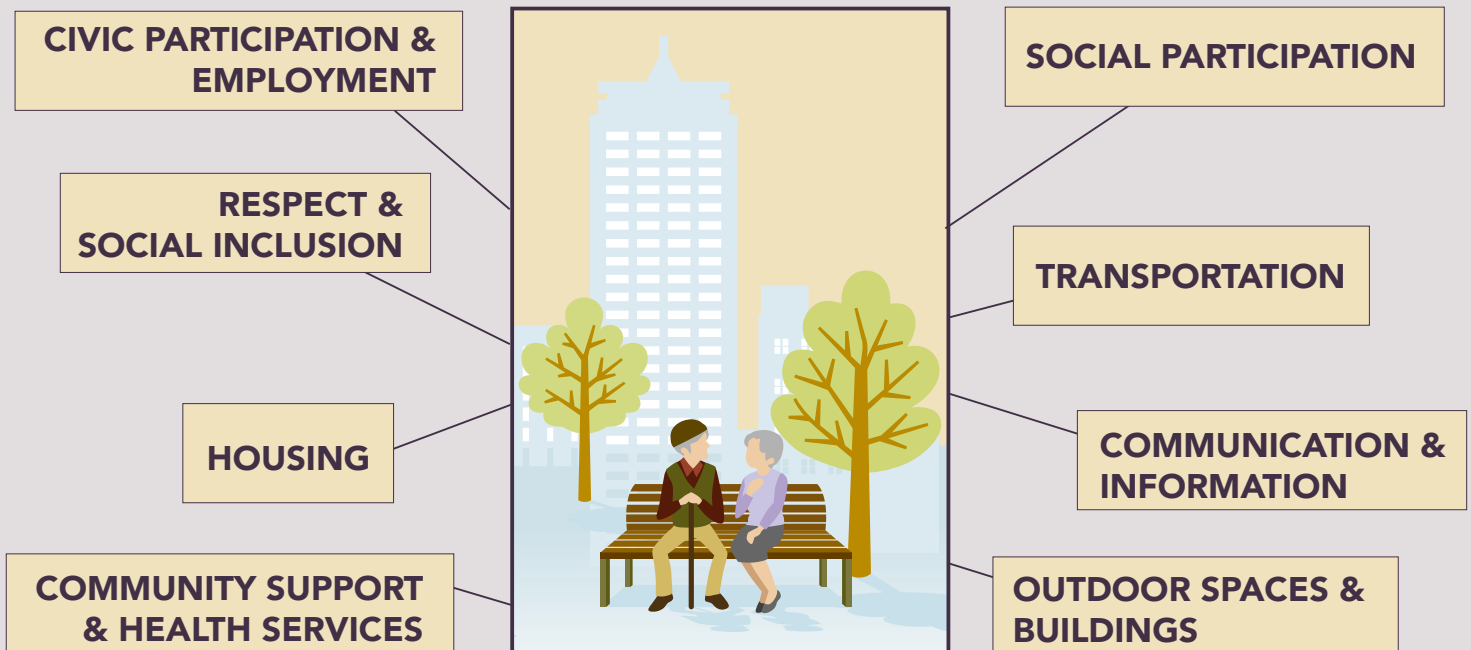
In June 2017, the Advisory Committee on Aging (ACoA) initiated an Age-friendly Needs Assessment to help assess the conditions experienced by seniors in the Wood Buffalo region.

The World Health Organization (WHO) identifies seniors as those 60 and older. This represents 4.9% of the region's population. When you include citizens who are 50 years and older, this number jumps to 17.9% of the population.

The assessment focuses on eight domains of community life, as set out by the WHO's Checklist of Essential Features.

WHO IS THE ADVISORY COMMITTEE ON AGING?

The Advisory Committee on Aging (ACoA) is a Council-appointed committee with the overarching goal of supporting aging with dignity in Wood Buffalo.



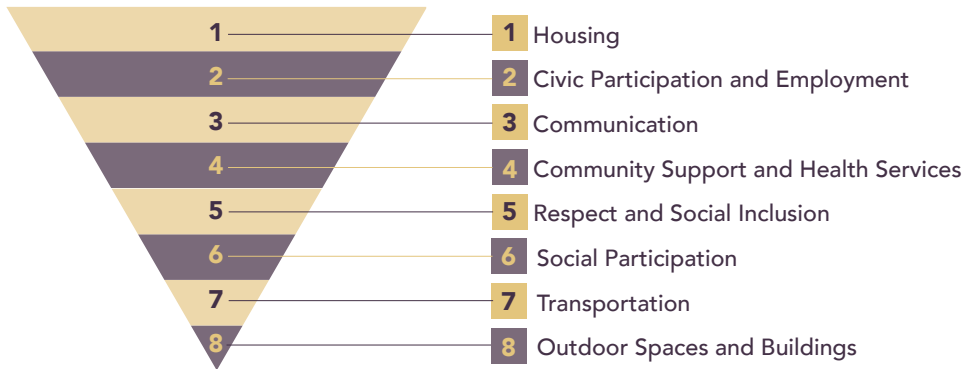
“We cannot access services that will allow us to stay in our homes.”

“There are no housing options for seniors with a range of wrap around services.”

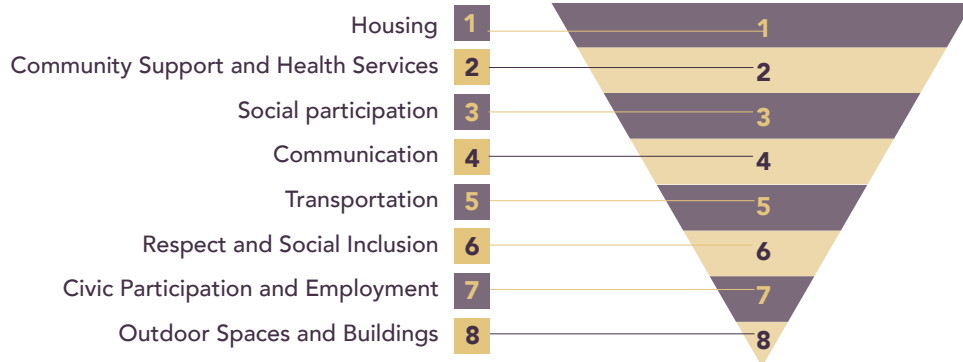
AREAS OF GREATEST NEED

Community members in both urban and rural areas were asked to rate their satisfaction with the eight domains of community life in our region. Based on these ratings, the assessment was able to highlight the areas of greatest need for seniors in the region:

URBAN

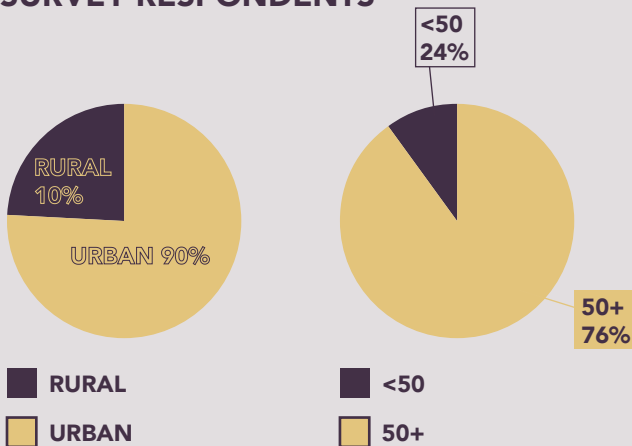


RURAL



WHO PARTICIPATED?

SURVEY RESPONDENTS



In addition to responses to the online survey, 121 community members attended meetings and interview sessions in the urban service and rural areas.

MOVING TOWARDS AN AGE-FRIENDLY COMMUNITY

Working to become a region that is more supportive and accessible for seniors benefits all residents. This report reminds us of what is currently being done for seniors and highlights areas that need to be strengthened or developed.

The ACoA calls upon the RMWB to respond to this report in order to truly make this an age-friendly regions for ALL residents.

The Advisory Committee on Aging (ACoA) was established by RMWB Council in 2014, with a mandate of making recommendations to them regarding issues affecting seniors. Working towards The Age-Friendly Cities and Communities designation with the World Health Organization (WHO), was approved by Council, and has been the focus of the work done by the ACOA. A consulting firm was hired to conduct a Needs Assessment in the region, as per the requirements of the WHO. This was completed in August of 2017. Questions in the survey were designed around the eight domains of the WHO:

- Outdoor spaces and buildings
- Transportation
- Housing
- Social participation
- Respect and social inclusion
- Civic participation and employment
- Communication and information
- Community support and health services

The two page summary document (included with this work plan) gives a snapshot of the Needs Assessment results. The full Needs Assessment can be found at RMWB/Acoa.ca. The results confirm that in some domains there is already good work being done. In other domains challenges and needs were exposed.

The RMWB Council received the results of the Needs Assessment at their meeting on November 14, 2017. At that same meeting, ACoA recommended that Age-Friendly be a part of the RMWB Strategic Plan and priorities, and that a work plan be developed to address the findings of the Needs Assessment. At the January 30, 2018 meeting, Council approved the 2018-2021 Strategic Plan which includes in #1f: “identify and adopt aging with dignity practices in the region” and “track implementation of the guidelines set out by the WHO Age-Friendly Cities Designation.” The work plan that follows is intended to give shape and direction for the types of things that need to be done to make our region more accessible and inclusive for all residents. As we seek to embed age-friendly practices, thinking, infrastructure, and services in our region, further areas of challenge and need may be exposed, so this work plan is intended to be a living document.

Success in being age-friendly will only occur when we move beyond checklists, to adopting and practicing age-friendly across all levels of thinking, governance, management and operations in the region. It is critical that this highly important work belongs to all of us. The ACoA looks forward to being part of the work so that the future promises “Aging with Dignity” for everyone in the region.

Linda Mywaart
ACoA Chair

AGE FRIENDLY WORK PLAN - 2018

The following Advisory Committee on Aging’s (ACOA) work plan is framed in alignment with the World Health Organization’s Global Age-Friendly Cities Guide and the corresponding eight domains. The level of need is reported based on the findings of the 2017 Age Friendly Needs Assessment report¹. There were significant differences between urban and rural responses and therefore the level of need for urban and rural are identified separately below.

1. OUTDOOR SPACES AND BUILDINGS

Outcome	Potential Action	Measurement	Partners	Need	Phase
There are sidewalks linking residences and essential services in most or all areas	Partner with planning and development to encourage sidewalk development between residences and essential services	# of sidewalks implemented between residences and essential services Do a survey of residents assessing their view of sidewalk availability and access Increase in survey respondents indicating sidewalks are available most of the locations	RMWB Planning and Development RMWB Engineering RMWB Public Works	Urban – Low Rural – Med/High	
Sidewalks in most or all areas of the community are well-maintained and accessible to everybody	Curb cuts are added to all sidewalks when repairs/upgrades are needed and/or budget allows for	# of sidewalks with curb cuts completed/vs not done # of sidewalks	RMWB Public works RMWB Parks RMWB Communications	Urban – Med/Low Rural – Med/High	

¹ Respondents indicated in the Age Friendly Needs Assessment the extent to which an outcome is available most of the time. The level of need indicated in the work plan is associated with the following percentages of responses which indicated the outcome is available most of the time: High 0%-20%, Med/High 21%-40%, Med/Low 41%-60%, Low 61%-80%, Not a Need 80%-100%.

	<p>Curb cuts to be included in all new development</p> <p>Perform regular repairs and maintenance</p> <p>Improve visibility of all signs where required</p> <p>Partner with P and D to implement best practices for sidewalks types (Universal Design)</p>	# of repaired and maintained sidewalks	RMWB Roads		
<p>Snow clearing is done in a timely manner so walking and driving are safe</p>	<p>Promote benefits of a shoveled community</p> <p>Promote Snow Angels</p> <p>Partner with Public Works</p> <p>Have End of Winter celebration with RM staff and volunteers</p>	<p>Increase in volunteers for Snow Angel Program</p> <p># of promotional ads for the Snow Angel Program</p>	<p>Wood Buffalo Snow Angels</p> <p>RMWB Public Works</p> <p>RMWB Parks</p> <p>RMWB Roads</p> <p>RMWB Communications</p> <p>Interagency Committee</p> <p>Chamber of Commerce</p>	<p>Urban – High/High</p> <p>Rural – Med/Med</p>	

There are enough street crosswalks in busy business, residential, and/or recreation areas	Complete a crosswalk audit in the urban area	# of crosswalks absent from locations that would benefit from Them # of cross walks completed/developed yearly	RMWB Planning and Development RMWB Public Works RMWB Parks	Urban – Low Rural – Med/Low	
Crosswalks are accessible to everybody, including individuals with visual or mobility impairments	Curb cuts throughout the urban area – where sidewalks exist Increase walk time and provide audible and visible signs where crosswalks exist Curb cuts to be included in all new sidewalk development	# of seconds added to designated crosswalks # of curb cuts made	Partner with Regional Inclusive Committee RMWB Planning and Development RMWB Public Works RMWB Parks	Urban – Med/High Rural – Med/High	
There are enough public washrooms in key areas	Public washrooms are recorded and indicated on the RM website and apps	Information available on RM website Information available on RM apps	RMWB Parks RMWB Planning and Development Regional Inclusive Committee RMWB Geographic Information Systems	Urban – High Rural – High	
Public washrooms accommodate people with	Regional Inclusive Committee accessibility audit	# of washrooms are wheel chair and stroller accessible AND operational	RMWB Public Service RMWB Parks	Urban – Med/High Rural – Med/High	

wheelchairs and strollers	Include in Planning and Development practices/standards		Chamber of Commerce Regional Inclusive Committee		
Most or all business and public buildings are easily accessible to everybody	Identify how many public buildings are accessible to those with mobility issues Future buildings in the RM utilize Universal Design or Barrier free for building codes	# of buildings that are Universal Design or Barrier Free Bylaw to outline universal design and/or barrier free	RMWB Planning and Development RMWB Engineering Chamber of Commerce Reginal Inclusive Committee	Urban – Med/Low Rural – Med/High	
Public facilities (recreation, transportation systems, parks and outdoor spaces) are accessible	RIC accessibility audit	# of facilities that are accessible and functional	RMWB Space Planning RM Planning and Development RMWB Parks Reginal Inclusive Committee Chamber of Commerce	Urban – Med/Low Rural – Med/High	

2. TRANSPORTATION

Outcome	Potential Action	Measurement	Partners	Priority	Phase
The road signs are easy to read and large enough for older drivers	Identify any signs that could pose a problem to seniors or those with slightly impaired eye sight	# of signs identified as being inadequate that are modified or changed	Government of Alberta RMWB Roads RMWB Engineering	Urban – Med/Low Rural – Med/Low	
Roads are in good repair and are well maintained	Audit of all road conditions in the region	# of repaired and constructed roads	RMWB Roads RMWB Geographic Information Systems RMWB Engineering	Urban – Med/High Rural – High	
Roadways are clear of obstructions that block a drivers' vision	RIC accessibility audit findings Clear any visibility barriers that impair driving sight lines	# of signs in region, vs # of reported signs requiring improvement	RMWB Roads RMWB Public Works	Urban – Med/High Rural – Med/High	
Ask that driver education and refresher courses are promoted for all drivers	Partner with Alberta Motor Association to promote refresher courses	# of ads in region # of print materials developed and/or used to promote this # of related courses # of participants	Alberta Motor Association Service Alberta Newcome Interagency Network Primary Care Network Local Physicians Multi-Cultural Association	Urban – High Rural – High	

			Golden Years Society Wood Buffalo Senior Resource Committee		
Roads and parking areas are promptly cleared of snow and ice	Promote Snow removal in media and social media Enforcement of bylaws	# of complaints of snow and ice issues on RM roads to PULSE # of tickets issued for non-compliance	RMWB Roads RMWB Public Works RCMP	Urban – Med/High Rural – High	
Affordable and accessible transportation options are available for those who do not drive to facilitate access to necessary services and opportunities for social and recreational well-being	Promote what services are available and at what cost Free transit by seniors 65 and older \$1.25 one-way for Specialized Transportation ride	# of accessible transit buses in operation and what hours # of Specialized Transportation vehicles # of bookings on Specialized Transportation Vehicles # of declined bookings	RMWB Transit RMWB Communications Organization Social Media St. Aidan’s Resource Guide	Urban – Med/Low Rural – High	
Public transportation is reliable and frequent, including at night and on weekends/holidays	Promote hours/routes on social media and print advertising Have RM Transit continue to have a seat at the Wood Buffalo Senior	# of accessible transit buses in operation # of Specialized Transportation vehicles # of bookings on Specialized Transportation Vehicles	RMWB Transit RMWB Communications Regional Inclusive Committee	Urban – Med/High Rural – High	

	<p>Resource Committee table</p> <p>Increase designated drops and pick-ups for people with mobility issues</p>	<p># user data tracked across board, broken down by age, non-senior, or senior, w/bicycle, wheelchairs</p>			
<p>Public transportation is easy to navigate, with accessible routes, and can accommodate people with hearing, visual or mobility impairments or strollers</p>	<p>Provide transportation across all media platforms information in formats easily understood by seniors</p> <p>Have RM Transit continue to have a seat at the Wood Buffalo Senior Resource Committee table (data)</p>	<p># of accessible transit buses in operation and what hours</p> <p># of Specialized Transportation vehicles</p> <p># of bookings on Specialized Transportation Vehicles</p> <p># of denied requests for Specialized Transportation</p> <p>Data should be collected and documented</p>	<p>RMWB Transit</p> <p>RMWB Comms</p> <p>Wood Buffalo Senior Resource Committee</p> <p>Regional Inclusive Committee</p>	<p>Urban – Med/High</p> <p>Rural – High</p>	
<p>Persons with disabilities can access reliable and affordable transportation</p>	<p>Continue to maintain accessible transit for seniors and the disabled</p> <p>Continued to maintain Specialized Transportation for seniors and the disabled</p>	<p># of accessible transit buses in operation during what hours</p> <p># of Specialized Transportation vehicles and hours available</p> <p># of bookings on Specialized</p>	<p>RMWB Transit</p> <p>RMWB Communication</p> <p>Regional Inclusive Committee</p>	<p>Urban – Med/High</p> <p>Rural – High</p>	

		Transportation Vehicles vs # of requests # of bookings that were not accepted due to capacity issues			
Affordable transportation services are available where public transportation is limited	Support the potential development of volunteer driver service for seniors Partner with AMA to supplement services offered by RMWB transit/specialized transportation in both urban and rural areas RMWB Transit to keep current costs for senior transportation (free transit and \$1.25 each way for Specialized Transportation)	# of meetings around volunteer driver programs to build capacity # of seniors' trips in alternate transportation programs	Alberta Motor Association (Driver Angels) Explore the possibility of working with a local agency to develop a volunteer driver program RMWB Transit Athabasca Tribal Council Metis (locals) Aboriginal groups	Urban – High Rural – High	
Information about transportation services is available	Publish information about transportation in Seniors Guide Promote in print and social media	# of digital and print informational ads/brochures # of informational pieces made available on the RMWB website	RMWB Transit St. Aidan's Senior Resource Guide Chamber of Commerce Indigenous Groups	Urban – Med/Low Rural – High	

	Use larger fonts for all information aimed at a senior population		Regional Recreation Corporation		
--	-------------------------------------------------------------------	--	---------------------------------	--	--

3. HOUSING

Outcome	Potential Action	Measurement	Partners	Need	Phase
Appropriate and affordable housing is available in areas that are safe and close to community services and amenities which help people stay connected	Wood Buffalo Housing Development Corporation to do housing needs assessment	Results from housing assessment being completed and published # of affordable units available for seniors # types of housing for seniors vs housing needs assessment results	Wood Buffalo Housing Development Corporation Advisory Committee on Aging RMWB Planning and Development Alberta Seniors and Housing Keyano College	Urban – High Rural – High	
Affordable housing options are available for people with a wide range of economic circumstances	Wood Buffalo Housing Development Corporation to do housing needs assessment Promote and advertise available housing options, both digital and in print	# of options or affordable and social housing # of housing options Keyano Information made available on social media about housing options	Wood Buffalo Housing and Development Corporation Property Management Companies Keyano Alberta Seniors and Housing	Urban – High Rural – High	

Appropriate and affordable home maintenance and support services are available	Explore potential organizational supported volunteer programs (to benefit seniors)	# of hours donated to seniors via volunteer program	RMWB Small business owners (contractors) Chamber of Commerce	Urban – High Rural – High	
Information about how housing needs can change with age is available	Publish housing information in print ad/materials Promote and advertise Wood Buffalo Housing Development Corporation' senior housing options	Count website hits Inclusion of information in St. Aidan's Society Senior Resource Guide	Wood Buffalo Housing and Development Corporation St. Aidan's Senior Resource Guide Alberta Health Services Home Care Alberta Seniors Communities and Housing Association Alberta Seniors and Housing	Urban – High Rural – High	

4. SOCIAL PARTICIPATION

Outcome	Potential Action	Measurement	Partners	Need	Phase
There are opportunities for people of all ages to be socially active	Support creation and development of volunteer programs	# of known seniors volunteering # of volunteering opportunities for seniors	St. Aidan's Society Wood Buffalo Senior Resource Committee Oil Barons	Urban – Med/Low Rural – Med/High	

			Keyano College Keyano Theatre FUSE Social		
There are a wide variety of activities offered to appeal to a diverse population of people, including older people and people with disabilities	Collect and promote activities offered within the community Provide information about religious activities and opportunities for socialization	# and type of activities that are accessible for people with disabilities and of interest to a diverse aging population	Regional Recreation Corporation Keyano McMurray All Connected Calendar Wood Buffalo Senior Resource Committee Golden Years Society Fort McMurray Legion RMWB Parks RMWB Community Strategies Multi-Cultural Association New Comers Group	Urban – Med/High Rural – High	
Events and activities are affordable and located in community venues	RIC Accessibility Audit	Finding's from RIC Accessibility audit	Regional Recreation Corporation Keyano	Urban – Med/High Rural – High	

that are comfortable and safe for older people and people with disabilities		# of post event surveys indicating accessibility and safety	Wood Buffalo Senior Resource Committee Golden Years Society Regional Municipality of Wood Buffalo Regional Inclusive Committee Syncrude Sports and Wellness Center		
Good information about activities and events is provided, including details about accessibility of facilities and transportation options for those who do not drive	Promote St. Aidan's Society's website (digital information) and St. Aidan's annual Senior Resource Guide Publish on MAC calendar Publish in Fort McMurray Today print newspaper	# of St. Aidan's Annual Resource Guide distributed # of persons using facilities for specific activities # of ads promoting MAC	St. Aidan's Society Wood Buffalo Senior Resource Committee Fort McMurray Today McMurray All Connected calendar	Urban – Med/High Rural – High	
There is consistent outreach to include people at risk of social isolation	Increase Senior Outreach infrastructure to handle capacity issues	# of outreach hours # of cases per outreach worker (client load) Provide information across media platforms	Wood Buffalo Senior Resource Committee Advisory Committee on Aging St. Aidan's Society	Urban – High Rural – High	

			Regional Municipality of Wood Buffalo		
			Alberta Health Services Home Care		
			RMWB 2018 Census data		

5. RESPECT AND SOCIAL INCLUSION

Outcome	Potential Action	Measurement	Partners	Need	Phase
There are opportunities for people of all ages to be socially active in the community	<p>Create awareness of existing programs and activities with print media, social media and informal and formal senior networks</p> <p>Create specific intergenerational activities</p>	<p># of participants at senior activities</p> <p># of different senior activities identified</p>	<p>McMurray All Connected</p> <p>Wood Buffalo Senior Resource Committee</p> <p>St. Aidan's Society 2018 Senior Resource Guide</p> <p>Golden Years Society</p> <p>Wood Buffalo Senior Support Society</p> <p>RMWB</p>	<p>Urban – Med/High</p> <p>Rural – High</p>	
Older people and persons with disabilities are recognized in their	Continue with Senior Male and Female of the Year awards	<p>Male and Female Senior of the Year</p> <p># of nominations</p>	Wood Buffalo Senior Resource Committee	<p>Urban – Med</p> <p>Rural – Med</p>	

community for their past and present contributions		# of individuals recognized	Advisory Committee on Aging		
Schools provide opportunities to learn about ageing and older people, and involve older people in school activities	Create partnerships with the 4 school districts to develop and implement workshops on aging and programs led by or involving seniors Adopt a grandma/grandpa program Shared Housing	# of intergenerational programs created	Fort McMurray Public School District #2833 Fort McMurray Roman Catholic Separate School District # 32 Northland School Division Keyano Conseil Scolaire Centre-Nord	Urban – Low Rural – Low	
There are opportunities to socialize and maintain good networks of friends, family and neighbors	Provide information to seniors in print and digital format Organize and plan Senior’s month annually Shared housing	# of activities available # of seniors attending the various senior activities	St. Aidan’s Society Golden Years Society McMurray All Connected Wood Buffalo Senior Resource Committee Wood Buffalo Regional Library Wood Buffalo Housing Development Corporation	Urban – Med/High Rural – Med/High	

			Keyano Regional Municipality of Wood Buffalo		
--	--	--	----------------------------------------------------	--	--

6. CIVIC PARTICIPATION AND EMPLOYMENT

Outcome	Potential Action	Measurement	Partners	Need	Phase
There are opportunities for people of all ages to participate in suitable volunteer, civic and employment positions	<p>Create a central entry point for those interested in volunteering</p> <p>Create and provide presentation to the Chamber of Commerce promoting the value of senior workers, as volunteer workers and community members</p>	<p># of senior volunteers</p> <p># of participants</p>	<p>Fort McMurray Chamber of Commerce</p> <p>Service Alberta</p> <p>Keyano Sports and Wellness</p> <p>Wood Buffalo Regional Library</p> <p>Wood Buffalo Food Bank</p> <p>Fuse Social</p> <p>Day Cares and Pre-Schools</p>	<p>Urban – Med/High</p> <p>Rural – Med/Low</p>	
The skills and attributes of older employees and persons with	Create a Public Service Announcement	<p># of ads</p> <p># of social media likes</p>	Fort McMurray Chamber of Commerce	<p>Urban – High</p> <p>Rural – Med/Low</p>	

disabilities are well promoted			School Districts Advisory Committee on Aging School K + E, VIP programs intersect with seniors		
Citizens have options that allow them to remain in the workforce if they choose to continue working, including a range of flexible and appropriately paid opportunities	Senior specific employment opportunities Decreasing hours of work where agreeable to maintain a senior's employment	# of ads # of employment opportunities	Fort McMurray Chamber of Commerce CHOICES	Urban –med Rural –med	
Local employers are aware of the potential contribution of mature workers and persons with disabilities and are aware of the benefits of attracting, retaining, and developing these individuals	Create a Public Service Announcement Provide information to employers Get existing information from employers for seniors Create list/compile a resource	Make information available to seniors about existing job opportunities	Fort McMurray Chamber of Commerce Service Alberta	Urban – med Rural – med	
Decision-making bodies in public,	Promote and encourage boards and	# number of seniors on boards and committees	Advisory Committee on Aging	Urban – High	

private and voluntary sectors encourage and facilitate membership for older people	committees to include seniors in their membership		Wood Buffalo Senior Resource Committee RMWB – all committees and Ad Hocs	Rural – Med/Low	
------------------------------------------------------------------------------------	---------------------------------------------------	--	---------------------------------------------------------------------------------	-----------------	--

7. COMMUNICATION AND INFORMATION

Outcome	Potential Action	Measurement	Partners	Need	Phase
The community has a basic, effective communication system that reaches community residents of all ages	MAC Radio Newsletters Newspapers Mailouts	# of listings on McMurray All Connected # of radio ads # of printed articles	McMurray All Connected Regional Municipality of Wood Buffalo Communications Golden Years Society St. Aidan’s Society	Urban – High Rural – High	
Information is readily available on community events, activities and opportunities	Promote McMurray All Connected (MAC) Various formats of coordinated communication be promoted	# of activities displayed on the MAC calendar # of formats providing this information	St. Aidan’s Society RMWB Communications Golden Years Society Wood Buffalo Senior Support Society	Urban – Med/High Rural – High	

<p>There is affordable and accessible access to computers and the internet</p>	<p>Promote access at library for computer use</p> <p>Create computer literacy classes</p>	<p># of senior signed up for classes</p> <p># of classes offered to seniors</p>	<p>Wood Buffalo Regional Library</p> <p>Golden Years Society Keyano</p> <p>Wood Buffalo Senior Resource Committee</p> <p>St. Aidan's Society</p> <p>RMWB Communications</p> <p>Wood Buffalo Senior Support Society</p>	<p>Urban – Med/High</p> <p>Rural - High</p>	
<p>People at risk of social isolation receive needed information and access to services</p>	<p>Distribute St. Aidan's Senior Resource Guide</p> <p>Disseminate the work of CARE (Connect, Access, Refer and Engage)</p>	<p># of new seniors reached and documented</p>	<p>AHS Home Care</p> <p>Wood Buffalo Senior Resource Committee</p> <p>Advisory Committee on Aging</p> <p>Senior Service Providers</p> <p>CARE Wood Buffalo</p> <p>RMWB Communications</p> <p>Golden Years Society</p>	<p>Urban – High</p> <p>Rural – High</p>	

--	--	--	--	--	--

8. COMMUNITY SUPPORT AND HEALTH SERVICES

Outcome	Potential Action	Measurement	Partners	Need	Phase
There is an adequate range of health and community support services offered for promoting, maintaining and restoring health	<p>SWOT analysis</p> <p>Partner with AHS and PCN to discuss challenges and opportunities</p> <p>Identify gaps Conduct a gap analysis</p> <p>Tele-Health in rural communities</p>	<p>Action plan completed</p> <p>Plans and services are updated, and information is available to the public</p>	<p>Alberta Health Services – Seniors (Carolyn Evancio)</p> <p>Primary Care Network</p> <p>Alberta Health Services - Home Care</p>	<p>Urban – Med/High</p> <p>Rural – High</p>	
Older adults are supported in staying physically active and safe	<p>Promote senior physical activities</p> <p>Promote Golden Years Society (activity center)</p> <p>Promote activities like Walk on the Island</p>	<p># of newly created senior physical activities</p> <p># of seniors participating in physical activities</p>	<p>Golden Years Society</p> <p>Wood Buffalo Senior Resource Committee</p> <p>Wood Buffalo Regional Library</p> <p>Regional Recreation Corporation</p> <p>Primary Care Network</p> <p>Keyano</p>	<p>Urban – Med/High</p> <p>Rural – High</p>	

			Wood Buffalo Senior Support Society		
Affordable services to help seniors and persons with disabilities, such as snow removal or lawn care, are available	<p>Promote Snow Angels</p> <p>Promote and educate community about the importance of being good neighbors</p> <p>Help create a lawn care program for seniors</p>	<p># of new sign-ups for Snow Angels</p> <p># of programs of this type of service</p> <p># of seniors signed up for the program</p> <p># of volunteers supporting the program</p>	<p>Senior service providers</p> <p>Chamber of Commerce</p> <p>Ministerial Association</p>	<p>Urban – High</p> <p>Rural – High</p>	
Local health care services meet the needs of older citizens	<p>Promote what services do exist, how and where to access</p> <p>Keep a comprehensive accessibility list</p> <p>Advocate and lobby for required health services</p>	<p># of new services for seniors</p> <p>Ensure access to medical care</p>	<p>Alberta Health Services – Seniors (Carolyn Evancio)</p> <p>Primary Care Network</p> <p>Home Care</p>	<p>Urban – High</p> <p>Rural – High</p>	
Community emergency planning considers the needs of older citizens and	Create Vulnerable Person’s Registry	<p>Media attention to the subject</p> <p># of posts</p>	RMWB Fire and Rescue	<p>Urban – Med/High</p> <p>Rural – High</p>	

<p>persons with disabilities</p>	<p>Promote disaster planning for service providers and the public specific to seniors</p> <p>Teach seniors to develop 72-hour emergency evacuation kit</p> <p>Review and update personal evacuation plans and readiness for emergencies</p> <p>Communicate plan on various platforms to public/seniors</p>	<p># of new releases</p> <p>(on disaster relief for seniors and disabled people)</p>	<p>RMWB Emergency Social Services</p> <p>RMWB Commuications</p> <p>Interagency</p> <p>RCMP</p>		
----------------------------------	------------------------------------------------------------------------------------------------------------------------------------------------------------------------------------------------------------------------------------------------------------------------------------------------------------	--------------------------------------------------------------------------------------	------------------------------------------------------------------------------------------------	--	--