



County Westmeath Age Friendly Strategy

2013 – 2016



CONTENTS

Foreword	3
Introduction	4
International Perspective	5
National and Local Context	6
Consultation process	8
Profile of People in County Westmeath	9
Baseline data	10
How the Strategy is Structured	11
Objectives	12
Action Plan	15 - 33
Appendix 1 – List of Partner Agencies	30
Appendix 2 - List of Acronyms	30
Appendix 3 – List of organisations who participated in consultation processes	31



Foreword

Census 2011 confirmed that 535,000 in people in Ireland are over the age of 65, which represents a 14.5% increase since 2006. Future projections estimate that by 2041, this figure is likely to increase to 1.3 million or as many as 1 in 5 of our population. In County Westmeath, 11,807 of our Citizens are aged 65 and over which represents a 39% increase on the 2006 figure.

The rapid increase in our ageing population and the associated increase in life expectancy is a welcome but challenging development, both demographically and socially, and has implications at an individual, family and societal level. It is in this context that the Government has recently launched the national Positive Ageing Strategy which challenges all of us to work creatively together to improve the delivery of services and supports for older people. In doing so, interventions must be designed to enable people to live healthily, independently and to actively participate in their communities as they grow older.

The National Age Friendly Cities & Counties Programme, under the auspices of which this Strategy has been developed is an important element of the overall support structure dealing with the challenge of ageing.

This strategy has been prepared following detailed consultation with older persons groups and I want to particularly compliment the Older Persons Council here in County Westmeath for their ongoing work in this area. The Strategy provides the framework for the preparation of Annual Action Plans under the guidance of the Age Friendly County Alliance which will deliver specific initiatives and improvements under the eight headings as set out in the Strategy. I want to thank the Members of the Alliance for their ongoing support and commitment to the Strategy development process and urge their continuing involvement, implementation and delivery phase.

Barry Kehoe
County Manager

Introduction

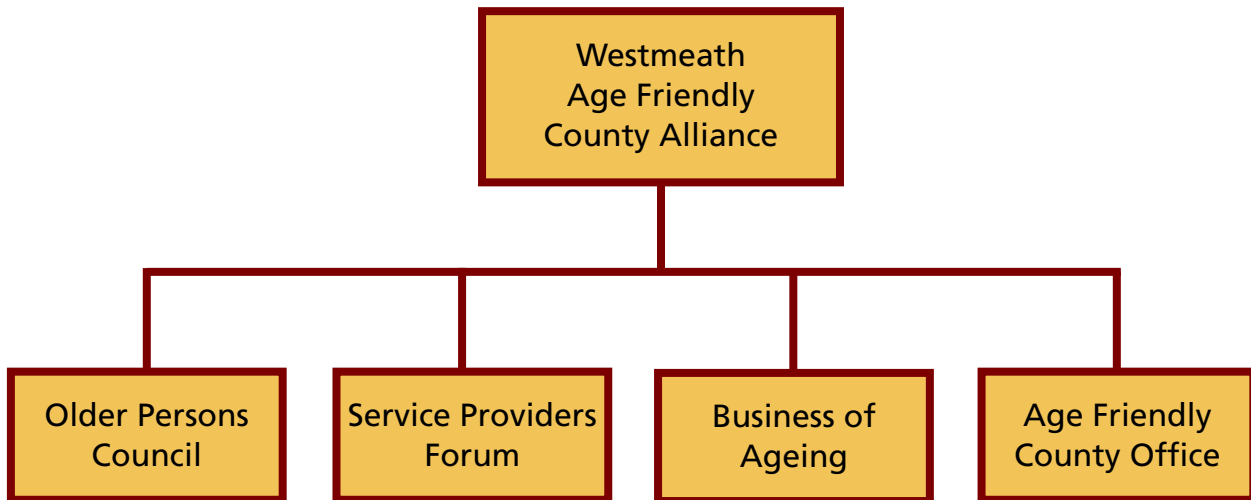
Westmeath Age Friendly County Strategy has been compiled in recognition of the changing demographics of Older People in the County. In its development it also takes account of the international context of policy and best practice lead out through the World Health Organisation (WHO) Age Friendly Cities Programme.

Westmeath County Council recognise that Older People are a valuable resource to the county and have much expertise, experience and resources to assist the counties growth. The strategy outlines that whilst Westmeath County Council have taken a leadership role in the development of the strategy that a multi agency approach will be undertaken to address the issues and challenges that have arisen through the consultation process.

This Strategy was developed through a consultation process with over forty Older Person's groups throughout the county, taking into account general issues and challenges faced by Older People and also noting local issues that older Persons Groups cited through the consultation process. A similar process was conducted with Service Providers

To support the implementation monitoring and ongoing evaluation of the Age Friendly County Strategy a number of structures have been established including; the Age Friendly County Alliance, the Service Providers Forum, the Older Persons Council and the Age Friendly County Office. These structures will continue to be facilitated through the lifetime of the strategy and the Age Friendly County Action Plan to ensure consistent progress in making County Westmeath a great county in which to grow old.

County Westmeath Age Friendly Counties Structure



The Age Friendly County Alliance is the overall strategic development group developed to oversee that the Age Friendly Strategy is implemented by the agencies. This group comprises primarily of the Chief Executives and CEOs of the organisation and they meet twice per annum.

The Older Persons Council is a collective of members of Older Persons Group who are charged with being the voice for Older People in the County. The Council is open to any older persons joining it on an ongoing basis and meets circa twice per annum. This group also has a representative on the Age Friendly Alliance and a member on the Service Providers Forum to ensure that communication is kept open between the different structures.

The Service Providers Forum is made up of all agencies and groups who have a brief in working with Older Persons. The membership comprises of staff from: local government; statutory; and community and voluntary organisations. The Service Providers Forum works together to implement the actions of the strategy. Because this group is action lead, they meet circa four to five times per annum. The group has a representative on the Age Friendly Alliance who feeds information to and from the different structures.

The Business of Ageing Forum comprises of agencies who have an interest in developing projects which support Older Persons interaction with the business community. A number of initiatives have been developed at a national level which

Members of County Westmeath Age Friendly Alliance



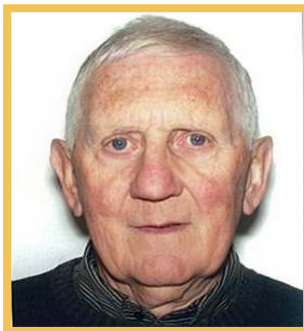
Barry Kehoe
County Manager



Mark Curran
Chief Superintendent



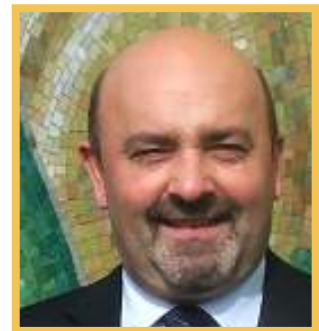
Joe Potter
CEO Westmeath
Community
Development



Fionn Gallagher
Service Providers
Forum



Joe Ruane
Area Manager



Dr Christy Duffy
Chief Executive
LWETB



Brigid Butler
Ageing Well Network



Dr Michael Tobin
Athlone Institute of
Technology



Phil Brennan
Representative of
Older Persons Council



Noel McCormack
Westmeath Rural
Community Transport



Teresa McCourt
Citizen Information
Services



Annette Barr Jordan
Older Persons Liaison
Officer WCC

International Perspective

The concept of an Age-friendly County is linked to an initiative started by the WHO Global Age-Friendly Cities Project in 2007. The Project took place with participation from 33 countries, including Ireland. Based on this consultation, the WHO developed a framework for Age Friendly cities. The 8 point framework covers eight specific areas for action to benefit older people. These eight areas are:

- Outdoor Spaces and Buildings
- Transportation
- Housing
- Respect and Social Inclusion
- Social Participation
- Communication and Information
- Civic Participation and Employment
- Community Support and Health Services

The WHO defines an “age-friendly” community as one in which service providers, public officials, community leaders, faith leaders, business people and citizens recognize the great diversity among older persons, promote their inclusion and contribution in all areas of community life, respect their decisions and lifestyle choices, and anticipate and respond flexibly to aging-related needs and preferences. In an age-friendly community, policies, programs, services and infrastructure related to the physical and social environment are designed to enable older people to live in security, enjoy good health and continue to participate in society in a meaningful way. It takes into account the biological, psychological, behavioural, economic, social and environmental factors that operate over the course of a person’s life to determine health and well-being in later years. Making counties age-friendly is one of the most effective policy approaches for responding to demographic aging.

National and Local Context

The National Age Friendly Counties & Cities Programme is a key initiative of the Ageing Well Network – an independent network of leaders and heads of organisations across the public, private and voluntary sectors in the field of ageing who share a vision of Ireland as the best country in the world in which to grow old, and are committed to achieving it. Co Westmeath joined the Programme in September 2011 having signed the Dublin Declaration on Age Friendly Cities and Communities. By signing the Declaration, the county made a commitment to a 5 year cycle of continual assessment and improvement to make the county age friendly.

The Vision for Westmeath as an Age Friendly County is that it will:

Recognise the diversity of citizens as they age from those who are healthy and active to those who are frail and in need of a wide range of supports

Encourage healthy active ageing

Support the contributions of Westmeath people as they age, recognising the wealth of wisdom, skills, experience and knowledge they have to share

Promote inclusion and participation in all aspects of community life

Engage older people directly in the development of policies that affect them

Create safe accessible environments

Treat citizens of all ages and generations with respect

Local Context

What Older People said an Age Friendly Strategy would mean for them.

"Give older people a say."

"Meeting people of same age and interests, sharing of information."

"Give people information of what services are available for them and let people know their Rights."

"Hope to learn new things and make new contacts"

"Every little you learn helps!"

"Stories that Older People tell about their youth is the most enjoyable part for me"

Quote from younger person

"Let the knowledge and experience of older people be passed onto the younger generation."



Consultation Process

Westmeath County Council undertook a wide consultation process over a 12 month period from March 2012 – March 2013. The consultation process took the form of three phases, the first phase incorporated three consultation sessions with Older Persons, it targeted over 50 community and voluntary groups the majority of which were Older Persons groups, the remainder were older persons support groups e.g social services groups.

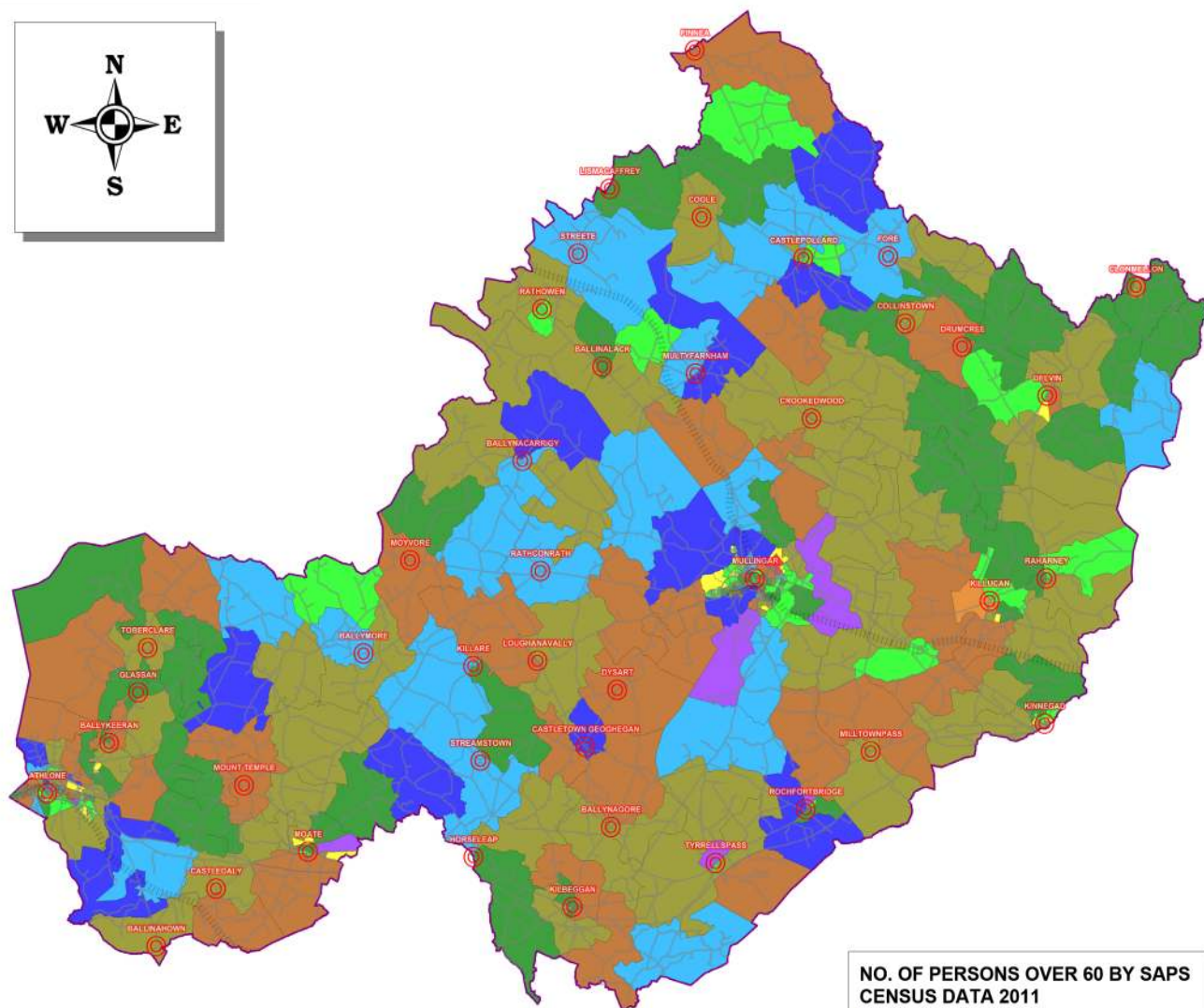
Phase two of the process included consulting with the agencies and service providers, this process targeted a multitude of agencies and stakeholders representing; statutory agencies, local development agencies, voluntary organisations and community organisations.

The third and final phase consisted of collecting data from CSO statistics and other areas to create a baseline of figures on population, break down of population based on density of older people, older people living alone etc. It also included information on older persons services and facilities being provided in the county. This third phase is ongoing and will form one of the actions of the Age Friendly action plan.

The consultation sessions were structured to collect quantitative information on; what older persons felt was positive in the community and with services and also what issues and challenges they faced under the World Health Organisation (WHO) 8 domains for Age Friendly Counties and Cities Programme.

The first draft of the Age Friendly Strategy was developed in March 2013 where further consultation was carried out with all the structures of the Age Friendly Counties programme in Westmeath namely; the Age Friendly Alliance, Service Providers Forum and the Older Persons Council. Here the final changes were noted and hence Westmeath Age Friendly Strategy was launched in September 2013.

Profile of Older People in County Westmeath



NO. OF PERSONS OVER 60 BY SAPS CENSUS DATA 2011

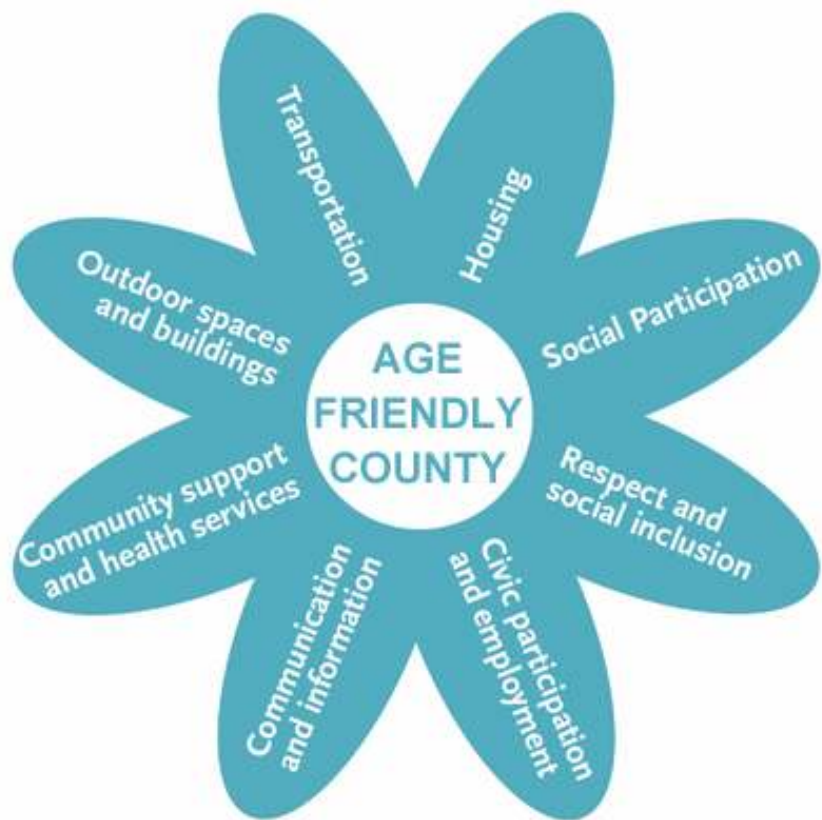
0 to 6 PERSONS	(31)
6 to 12 PERSONS	(59)
12 to 18 PERSONS	(62)
18 to 24 PERSONS	(79)
24 to 30 PERSONS	(53)
30 to 36 PERSONS	(28)
36 to 42 PERSONS	(17)
42 to 48 PERSONS	(6)
48 to 54 PERSONS	(1)
54 to 57 PERSONS	(2)

CSO Information – based on census 2011
 The population of Westmeath
 The population of persons aged over 60

How is the Strategy Structured

Aims of the Strategy

1. Outdoor Spaces and Buildings
2. Transportation
3. Housing
4. Respect and Social Inclusion
5. Social Participation
6. Communication and Information
7. Civic Participation and Employment
8. Community Support and Health Services



Aims

The aims of the programme are that Older People can:

- Stay living in their own homes and communities
- Get to go where they need, when they need
- Be enabled by the built and social environment
- Feel and be safe at home and out and about
- Live longer healthier lives
- Have the information they need to lead full lives
- Be truly valued and respected
- Participate in social, economic and public life
- Continue to learn, develop and work

Objectives

The objectives of the programme are to:

- Improve the health and well-being of older people in the county and increase their participation and influence in the social, economic and cultural life of the community, for everyone's benefit;
- Foster better long-term integrated service and land-use planning through imaginative and cost-effective partnerships of local authorities, health service providers, gardai and other key public, private and voluntary organisations to address the changing needs of a rapidly ageing population;
- Share the evidence of the benefits to be gained and the lessons to be learned from such an integrated multi-stakeholder initiative.

Approach

The Westmeath Age Friendly County Alliance was established by the County Manager and comprises representation from key organisations including Westmeath County Council, HSE, An Garda Síochána, the Ageing Well Network, Athlone Institute of Technology, LWETB, Westmeath CIS, Westmeath Rural Community Transport, Service Providers Forum, Older Persons Council, Longford Westmeath Education and Training Board. The membership is committed to joint planning and to working in partnership to achieve Age Friendly County status. This involves the development of the Age Friendly County strategy and on going monitoring of the implementation process. An Action Plan will be developed which will outline; short, medium and long term goals. Lead organisations will be associated with individual actions and will be requested to prepare reports on progress of respective actions for dissemination to the Age Friendly Alliance committee, the Service Providers Forum and the Older Persons Council.

Outdoor Spaces and Buildings

Expected outcome:-

Older People will be enabled by the built and social environment

What is working well for older people

- Very Good street lighting in Athlone
- Improved access to parks and football pitches
- Outdoor exercise facility for older people in Coole

Issues identified by Older People

General Issues

- Not enough seating in Mullingar town
- Lighting not adequate in rural areas and towns,
- Improve access on the banks of the canal in places it can be stony and not level or accessible for older people
- No cycle paths in Moate itself
- Pathways need to be improved to make level and safe
- Library services closing in rural areas and no mobile service available
- Access to some health services are not age friendly or disability friendly
- Lack of Park facilities in rural areas
- No Public Toilets in Moate, Athlone or Mullingar
- Graveyards are falling into disrepair

Proposed Partners

- Westmeath County Council
- HSE
- Dept Social Protection Westmeath Community Development (Rural Social Scheme, LEADER and LCDP)
- Dept Social Protection

Outdoor Spaces and Buildings

Actions	Lead Agency
Continue to review age friendly accessibility to Health Centres as part of the development of Age Friendly communities.	HSE
Make toilets available in local authority offices for public use during office hours.	WCC
Ensure the equitable distribution of the community grants scheme in the interests of the older population	WCC
Ensure outdoor provision in the areas of footpaths, public lighting and signage takes account of the needs of older people i.e to carry out Age Friendly audits to inform future planning.	WCC
In continuing its programme of cycleway and outdoor recreation provision Westmeath County Council will take account of and consult with the Older Persons Council.	WCC
Ensure that the older Persons Council is consulted with regarding the County Development Plan and Local area Plans.	WCC
Explore in consultation with the Older Persons Council means to access the library services other than the built library network.	WCC
Provide funding for enhancement projects under the Rural Development Programme (RDP)	WCD
Provide signage for recreational and tourist amenities available under the Rural Development Programme	WCD
Provide Rural development grants for community facilities.	WCD
Engage WCD Rural Social Scheme and TUS programme to improve accessibility and upkeep of graveyards.	WCD/FAS/Dept Social Protection

Transportation

Expected outcome:-

Older People will be able to get to go where they need, when they need

What is working well for older people

- Rural Transport
- Public Transport/Town Link with access to Tullamore & Mullingar Hospitals
- Transport very good through Moate

Issues identified by Older People

General Issues

- Lack of information on what transport is available in Westmeath
- Lack of Transport for hospital appointments
- Retain free bus pass as this is very important to Older People to get to services and some social outings
- Retain existing Rural Community Transport scheme
- Expand Rural Community Transport scheme as this service facilitates some of the basic needs of Older people being met e.g. shopping
- No night bus service available so older people cannot go to the cinema or arts centre
- Seating at bus stops essential
- Shelters at bus stops required
- Some people want to Volunteer for Rural Community Transport Service
- Lack of bus timetables for Bus Eireann Schedules

Proposed Partners

- Westmeath County Council
- HSE
- Westmeath Rural Community Transport
- Westmeath Community Development (Rural Social Scheme, LEADER and LCDP)
- Bus Eireann

Transportation

Actions	Lead Agency
Address the transport information needs through a communication strategy	WCC Media Westmeath Rural Community Transport
Examine the feasibility and provide as appropriate additional bus stops and shelters in the context of a countywide transport plan	WCC N.R.A. Bus Eireann
Continue to take a lead in the networking of the various transport providers in the context of integrating services	WCC Older Persons Council
Promote benefit of local rural transport and lobby for necessary funding for continuation of service and expansion where appropriate	Older Persons Council WCC- Integrated Transport Initiative HSE
Investigate opportunities whereby Hospital appointments for geographic communities are scheduled for a particular timeframe every week hence, facilitating patients from same geographical areas to attend appointments via rural transport.	Westmeath Rural Community Transport
Continue to provide transport for Older People in the community to enable access to core services	Westmeath Rural Community Transport



Home

Expected outcome:-

Older People can stay living in our own homes and communities

What is working well for older people in the County

- CE Scheme keeps the place looking well
- Availability of Panic Alarms
- Meals on Wheels
- Good neighbours
- Good community
- Summer/homework clubs
- Women's groups/mother and toddler groups
- In Athlone a bus brings people to the town every hour
- Gated community very satisfactory for people with disabilities
- Walk in showers with sliding doors very good for people with disabilities

Issues identified by Older People

General Issues

- Lack of Older Persons Housing
- Support for independent living access to services can be limited
- Some older people very isolated and don't have visitors
- Housing upgrades required by some when old people become more feeble
- Closure of Garda Stations raising security concerns
- More information on alarm systems
- Public Health Nurse be more alert to the needs of older people, visit the more vulnerable more often and do prevention work

Proposed Partners

- Westmeath County Council
- Helplink South
- Westmeath Community Development
- Garda
- Community and Voluntary Groups
- Care and Repair Service
- HSE
- Irish Farmers Association

Home

Actions	Lead Agency
Ensure the scheme of letting priorities and housing assessment process adequately responds to the needs of the Older Person	WCC
In the context of emergency planning and adverse weather ensure a community resilience plan is in place	WCC IFA Garda HSE
Gardai to be present and contactable in the Community through Garda Clinics where Garda stations are closed. Clinics to be established according to needs and current requirements and Liaison Garda to be appointed for specific areas in County Westmeath	Garda
All Garda Divisional resources will be utilised as part of "Operation Obair " to combat burglaries. There are two strands to this operation (1) Prevention Crime patrols check points and crime prevention advise (2) Detection, targeting and tracking of specific offenders in Westmeath.	Garda
Gardai to promote Community Prime Prevention Programmes and encourage greater participation between Community Garda and Community Groups. Expansion of Text Alert System through Neighbourhood Watch/ Community Alert Schemes and Community Crime Prevention Projects	Garda Community Groups
Work with Older Persons Groups to strive to maintain local services for Older People i.e Meals on Wheels	HSE Older Persons Council
Explore interagency working with the community and local business to address safety and security issues of older people	Older Persons Council Garda Community Business
Promote and advertise the Personal Alarm system for Older Persons in their homes throughout the county	Helplink South 1428 Club Older Persons Council
Expand the pilot Care Service (Cairdeas) to other areas in the county	WCD Care and Repair Service
Continue the rollout and promotion of the Repair service in Westmeath	WCD Care and Repair Service

Respect and Social Inclusion

Expected outcome:-

Older People will be truly valued and respected

What is working well for older people

- Local groups/social groups
- Consultation
- Meetings that include social activity
- Library services
- Bealtaine Festival

Issues identified by Older People

General Issues

- Raise awareness tactfully of isolation of older people
- Local involvement and local outreach gives people a positive feel about being involved
- Befriending programme not targeting who it should
- Value of assisted shopping for Older People
- Consultation is not always accessible
- Media should project Older People in a positive way
- Older people don't know what's available in the area

Proposed Partners

- Westmeath County Council
- HSE
- Westmeath Community Development
- Community and Voluntary Groups
- Care and Repair Service
- LWETB
- Citizens Information Services

Respect and Social Inclusion

Actions	Lead Agency
Reconvene the Older Persons Council as County Westmeath Older Persons Council	WCC Older Persons Groups
Develop with others a consultation framework to keep the older persons community informed :- showcases etc	WCC Older Persons Council
Prepare with others an Age Friendly Community public awareness campaign	WCC CIS Schools
<p>Prepare with CIC a directory of relevant services for distribution to Older People</p> <p>Continue to encourage maximum participation of the older persons in community work through there adequate recognition in the community awards schemes</p>	CIS WCC
Launch and rollout telephone Befriending programme for older people	CIS WCD
Continue to support physical activities for Older People i.e. "Go for Life" and Bochi Sports Partnership Further foster and roll out intergenerational opportunities and activities	LWETB WCC WCD All agencies
Continue to support the Bealtaine Festival.	LWETB WCC Libraries



Social Participation

What is working well for older people

- Summer /homework groups
- Kilbeggan Voluntary Forum
- When Council facilitate events where we can come together
- Grants for Older Persons Groups from the Council
- Women's groups/Mother & Toddlers Groups

Issues identified by Older People

General Issues

- Intergenerational Projects should be supported and facilitated by Dept of Education by using Older Persons Groups
- Additional workshops and networking meetings of Older Persons Groups required
- Affordable activities and trips for Older People should be facilitated a couple of times per year.

Proposed Partners

- LWETB
- Schools
- Westmeath Community Development
- Community and Voluntary Groups
- Irish Rural Links



Social Participation

Actions	Lead Agency
Ensure the Older Persons Council is consulted by default on all forward planning within the county	All Agencies
Ensure a portion of community grants are targeted at facilitating older persons participation in the community	WCC
Support information, activities and networking mornings, events for Older Persons Groups.	WCC Older Persons Council 1428 club
Facilitate the engagement of the Older Persons Council on the Social Policy Network when established	CIS Older Persons Council
Continue to roll out educational and information sessions for Older Persons Groups in the County	CIS
Continue to support Older Persons Groups through community education programmes, grant aid and/or tutor/facilitator supports	LWETB
Ensure that Older Persons Council's views are reflected by Irish Rural Link through Regional and National Policy frameworks/ structures.	Irish Rural Link
Continue to provide computer classes for Older People's groups, Active Retirement Associations and Day Care Centres	LWETB

Communication and Information

Expected outcome:-

Older People will have the information they need to lead full lives
People continue to learn, develop and work.

What is working well for older people

- Opportunity to pass on knowledge through the set up of craft room in Milltown
- Intergenerational Projects

Issues identified by Older People

General Issues

- Information is not getting out there. Agencies and groups should not rely on IT to communicate.
- Printed forms too small
- Proper signage to take visual impairment into account
- Not enough information on local doctors and health centres
- Need Citizen Information Services to visit local Older Persons groups more often
- Difficulty with answering machines that are animated – instructions get older people confused
- More knowledge of local activities and events needed
- Too much reliance on IT communication and information, many older people are not IT literate and don't have computers
- Computer training from basics to advanced for Older people who wish to learn computer skills – learn in a comfortable environment

Proposed Partners

- Westmeath County Council
- Citizens Information services
- LWETB
- Westmeath Community Development
- Community & Voluntary Groups

Communication and Information

Actions	Lead Agency
Lead the design and implementation of creative and flexible responses to meet emerging demands for information, advice, advocacy and budgeting support	CIS
Prepare with CIC a directory of relevant services for distribution to the elderly – already in respect and social inclusion.	CIS WCC
Ensure all printed forms are available in larger print if required	WCC
Meet the changing advocacy needs of citizens, particularly of marginalised and vulnerable older persons	CIS
Develop a means of capturing individual and local history - Pass on knowledge programme - Documented information, photographs, opportunity to pass on heritage	LWETB WCC WCD
Provide computer training on web and emailing for older people who wish to communicate in that manner	LWETB



Civic Participation and Employment

Expected outcome:-

Older People will participate in social, economic and public life

What is working well for older people

- Volunteering service
- Befriending programme Kinnegad
- Shed initiative

Issues identified by Older People

General Issues

- Older people have to renew Drivers License every year inconvenience and costs associated
- Insurance can go up without clear explanation of why.
- Older People have significant skills to pass onto younger people
- Younger People can teach older people skills like mobile phone usage and computers

Proposed Partners

- Westmeath County Council
- Westmeath Community Development
- Community and Voluntary Groups

Civic Participation and Employment

Actions	Lead Agency
Older Persons Council will create a plan of activities in consultation with other agencies for its members on an annual basis.	Older Persons Council WCC
Engage with business to promote the business of ageing recognition scheme	Chamber of Commerce Local Businesses
Ensure the volunteer centre engages with the Older Persons Council in the recruitment of Volunteers to ensure the wisdom, knowledge and skills are reflected within the volunteer core.	WCC WCD Volunteer Centre Older Persons Council
To introduce the business of ageing recognition scheme	WCC



Community Support and Health Services

Expected outcome:-

Older People will lead healthier and active lives for longer

What is working well for older people

- Kilbeggan Social service chiropody clinic
- Very good medical centre in Moate

Issues identified by Older People

General Issues

- Access to Rochfordbridge Health Centre
- Cheaper medications that do the same should be prescribed by doctors
- Home help hours being cut causing a lot of problems for infirm Older People
- Tips on nutrition for Older Persons Groups
- Chiropodist, services available to Older People free or at an affordable cost to coincide with rural transport timetable
- Long waiting lists for hospital appointments
- Costs associate with patients on Oxygen
- Positive Mental Health for Older People
- Some club members have Alzheimer's – more help is needed for people living on their own and training required for family members

Proposed Partners

- Westmeath County Council
- HSE
- Mental Health Ireland
- Westmeath Community Development
- Community & Voluntary Groups
- Alzheimers Association
- Older Persons Council

Community Support and Health Services

Actions	Lead Agency
Further develop and provide the Adult Mental Health Services to people over 65 through referrals and once developed through Primary Care and Day Care Services	HSE
Establish positive mental health programme specifically targeted at Older People	Mental Health Ireland Mullingar
Further roll out the "Healthy Food Made Easy" project to engage Older People regarding nutritional advice.	HSE
Engage with the Alzheimer's Association on the development of Dementia Friendly Committees.	Alzheimer's Association
Deliver Capacity Building sessions to Older Persons Groups in the Community	WCC Older Persons Council



Appendix 1 List of Partner Agencies

Westmeath County Council
 Garda Siochana
 Athlone Town Council
 Westmeath Community Development Ltd.
 Dept. of Social Protection
 HSE
 Athlone Institute of Technology
 Sports Partnership
 Longford Westmeath Education and Training Board
 Citizens Information Service
 Alzheimer's Association
 Westmeath Rural Community Transport
 Irish Rural Link
 Chamber of Commerce
 Older Persons Council
 Service Providers Forum
 Community & Voluntary Forum
 Mental Health Ireland

Appendix 2 Acronyms

WCC	Westmeath County Council
LWETB	Longford Westmeath Education and Training Board
ATC	Athlone Town Council
WCD	Westmeath Community Development Ltd.
DSP	Dept. of Social Protection
HSE	Health Service Executive
AIT	Athlone Institute of Technology
Sports Partnership	Westmeath Sports Partnership
CIS	Citizens Information Service
WRCT	Westmeath Rural Community Transport
C & V Forum	Community & Voluntary Forum

Appendix 3

List of organisations who participated in consultation processes

Castletown Geoghegan Social Services Council
 Clonmellon Community Council
 Collinstown Rural Development Assoc.
 Coole/Whitehall Social Services
 Athlone Architectural Heritage Group
 Crookedwood Community Development
 Cill Cuan/Lissadelle Adult Day Services
 Kilbeggan Young at Heart
 Country Belles Ballynacargy
 Castletown Geoghegan Community Development
 Ballykeeran - Glasson-Tubberclair Development
 Mount Temple Active Age
 Glasson/Tubberclair Social Services Council
 Muscular Dystrophy Ireland (MDI)
 Tyrrellspass Active Retirement Group
 Dalton Park Management Group
 ICA Westmeath Federation Delvin
 Delvin Area Housing & Ind Development
 Delvin Community Education Group
 St. Mel's Womens Group
 St Kierans Community Centre
 Mna An Mhuilinn (Milltown Womens Group)
 Golden Girls St Kierans Community Centre
 Drumraney & District Dev. Council
 Monsignor McCarthy Family Resource Centre
 Athlone Women's Network
 Drumraney Stroke Club
 Royal Canal Amenity Group
 Rochfortbridge Parish Social Services Council
 St Peters Centre
 Young at Heart
 Boherquill Ramblers Walking Club
 Athlone Community Radio
 Moate Active Retirement Group
 Cara Phort Family Resource Centre
 Ballinafid/Multyfarnham Social Services
 Streete Community Development
 Active Friends 08 Rochfortbridge
 Ballynacargy Social Services
 Whitehall Community Group
 Tang Golden Years Club
 Fore Heritage Group
 Athlone Midland Samaritans
 Mental Health Association (Athlone)
 Ballynacargy-Sonna Community Development Group
 LARCC Cancer Centre
 PWDI
 Irish Wheelchair Association
 Rahugh Social Services
 Westmeath Rural Transport Association Ltd.
 Moate Ladies Education Group
 Ballinafid ICA
 Helplink South
 BCDL Community Group Ltd.
 Loughnavalley Community Development
 Lismacaffrey / Boherquill Village Enhancement Group
 Whitehall Older Peoples Group
 ICA Clonmellon
 Kinnegad/Coralstown Social Services & Active Aged
 Castlepollard Guild ICA
 Horseleap/Streamstown Community Association
 Moyvore Thursday Club
 S.W.E.E.T.S. Ltd.
 Rosemount/Streamstown Day Care Centre
 Killucan Care Group
 Killucan Golden Years Club
 Multyfarnham Active Retirement Association
 Mullingar Friendship Club
 ATK Community Centre Ltd.
 Rathowen Development Assoc.
 Mullingar Stroke Club
 Irish Country Womens Association
 Coole Older Peoples Group
 Irish Red Cross Society-Athlone
 Garda Siochana
 Athlone Town Council
 Teagasc
 Westmeath Community Development Ltd.
 Dept. of Social Protection
 F.A.S.
 HSE
 Athlone Community Taskforce
 Westmeath County Council
 County Childcare Committee
 Athlone Institute of Technology
 Sports Partnership
 Longford Westmeath Education and Training Board
 Citizens Information Service
 Alzheimer's Association
 Westmeath Rural Community Transport
 Irish Rural Link
 Chamber of Commerce
 Older Persons Council
 Service Providers Forum
 Community & Voluntary Forum
 Mental Health Ireland

