

Our Age Friendly Journey Salford

“More people live to their 100th year, it is important that we respond and support our older people. Making Salford age-friendly encourages active ageing and enhances the quality of life as people age”

Salford City Mayor



“As an individual it can be hard to get things to change but as a group, people listen and take on board what we say.”

Older people are able to feel safe and travel to places which help keep them healthy and engaged

“I realise how valuable older people are in society, we clearly have a purpose and a part to play in making our region a better place.”

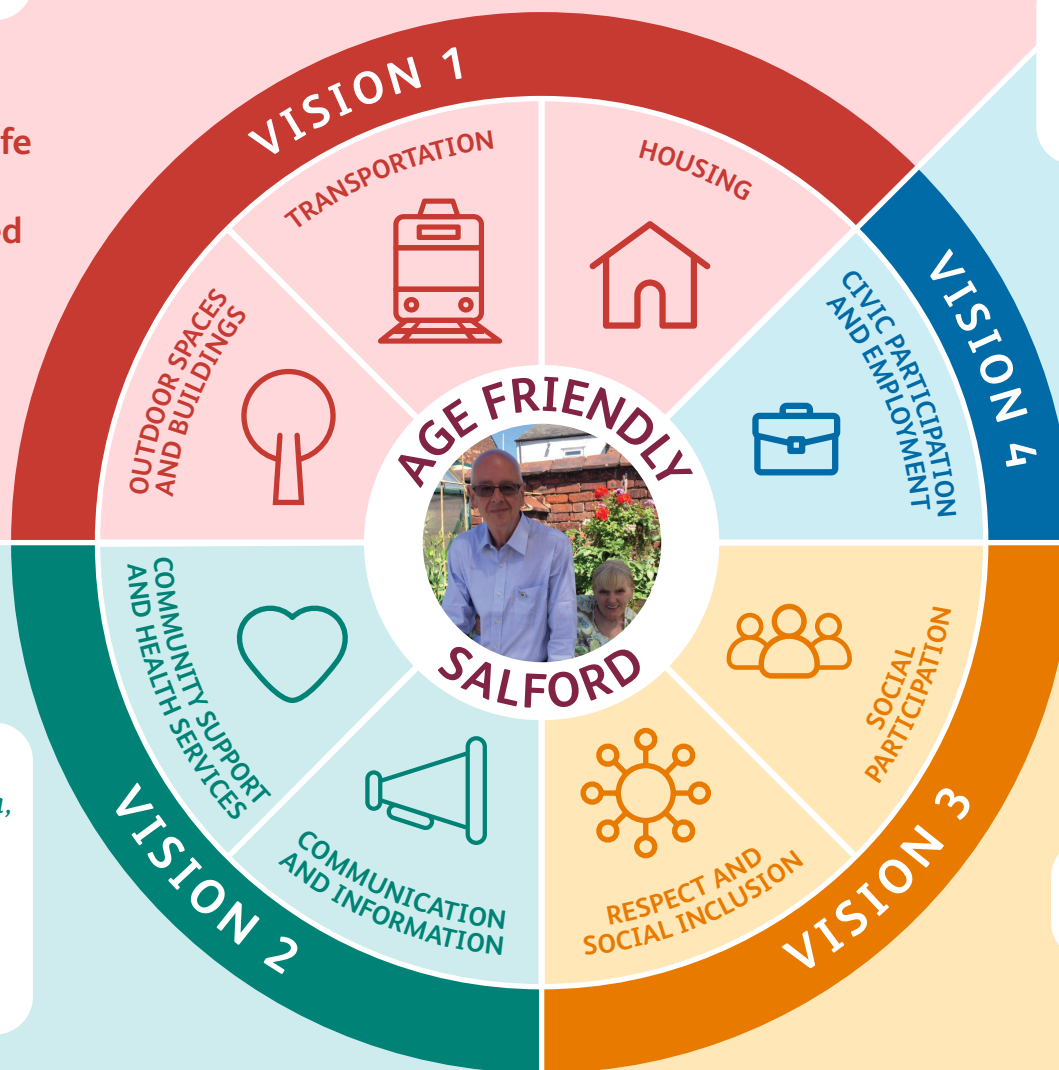
Older people are able to find opportunities for paid and unpaid work as well as ensure their voice is heard to keep them healthy and engaged

“There are a number of people out there trying to live well with dementia, some of them don't have a voice or unable to have their voice heard. As someone living with dementia I intend to be their voice for as long as I have capacity.”

Older people are able to find information and services to keep them healthy and engaged in activities

“I have made new friends and get out of the house more and I feel valued.”

Older people feel respected and included in neighbourhood activities to keep them healthy and engaged



An Age Friendly City approach would not be possible without working with local older people. Thank you to everyone who has actively played a part.

Together we can:

- Share information about what is happening in our local communities by talking to our neighbours and friends
- Make sure we inform and engage with those who feel socially isolated
- Help each other to report community safety and environmental concerns
- Remove barriers to technology so older people are more digitally connected and have easy access to learning and education
- Build a culture of sharing information between neighbourhoods
- Make sure older people are listened to and feel valued and able to influence change

For further information about age friendly cities visit:
<https://extranet.who.int/agefriendlyworld/network/salford>

Thanks to our partners

